

PCI Express to ExpressCard External Adapter

PE51U

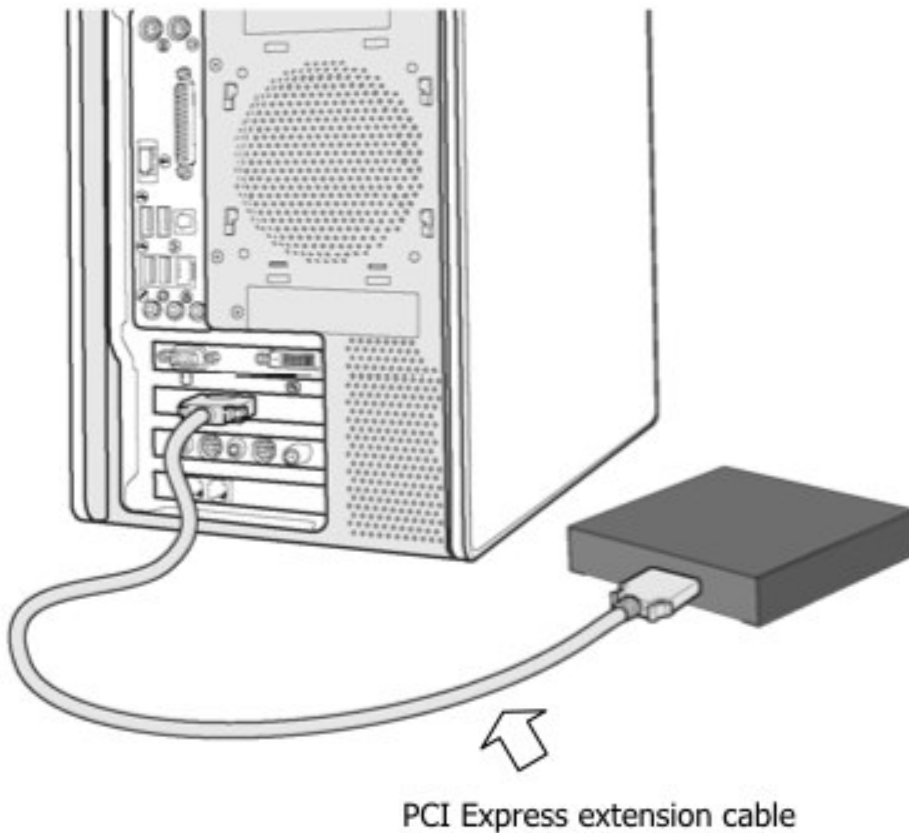
Installation Guide for Windows PC

Dec 2009
Rev. 1.0.E

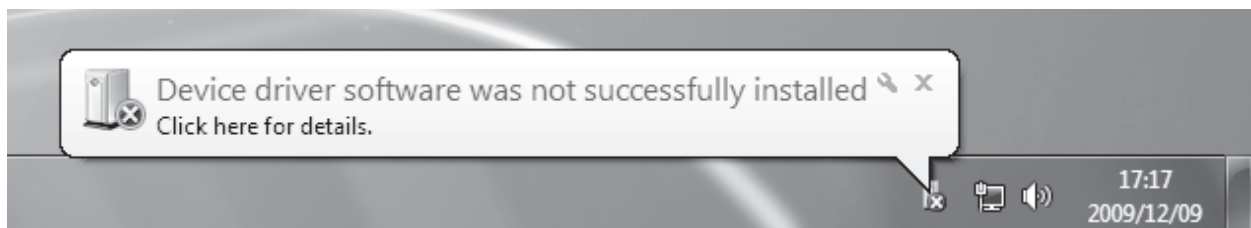


0. Before Installation:

After the host computer is off and all power cords disconnected, insert the card into a vacant PCI Express slot by gently pushing the card until it is firmly seated.



At the first system boot you will see the balloon message below. You do not need to do anything, go ahead to the installation steps below.

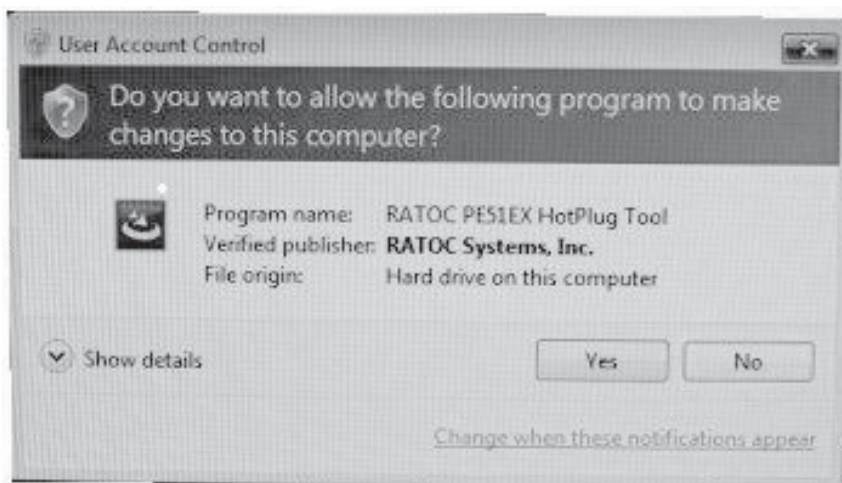


1. Windows Installation

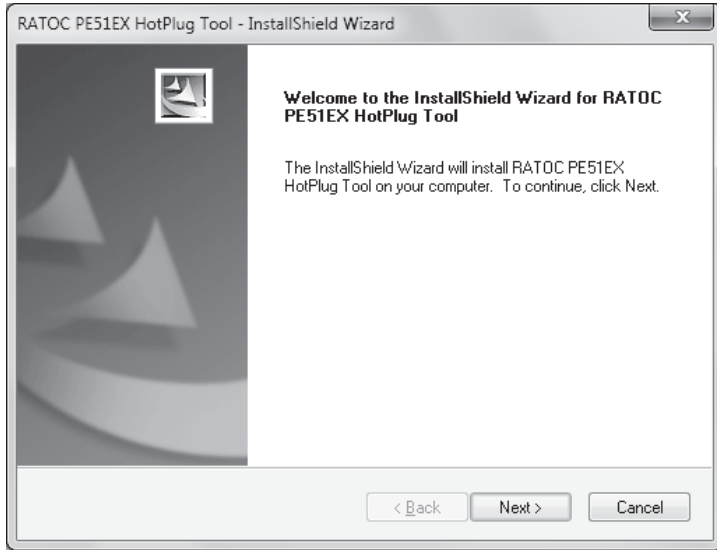
Insert the provided CD into your disc drive.
 You will see the AutoPlay dialog box, click the "Run RATOC-PE51 HotPlugTool-Setup.exe".



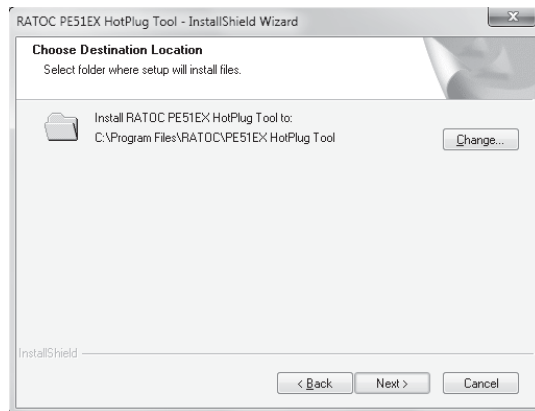
Under Windows 7 or Windows Vista you will see the "User Account Control" dialog box.
 Click the "Yes" button.



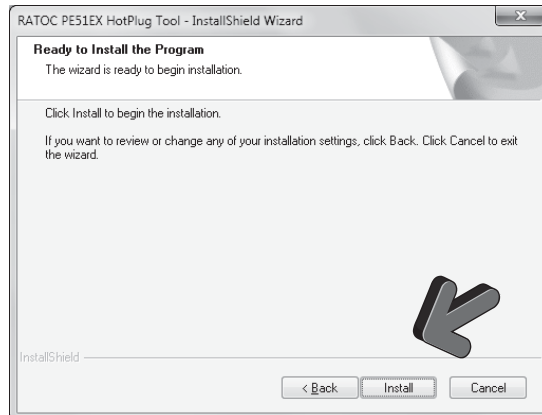
Installation will start, click the "Next >" button.



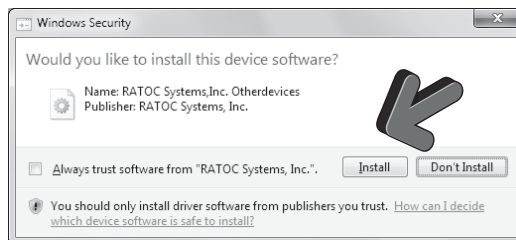
Installation will start, click the "Next >" button.



Click the "Install" button.

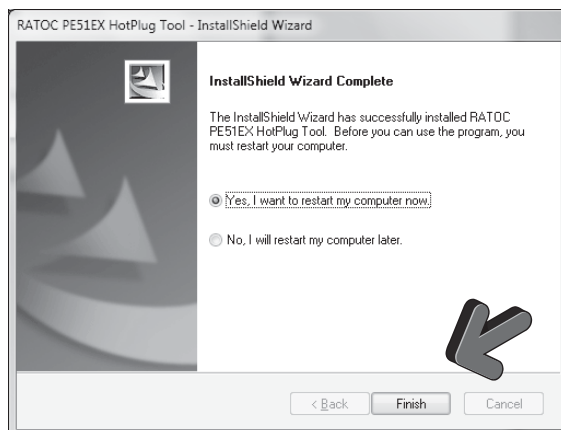


Security warning message will be displayed.
Click the "Install" button.

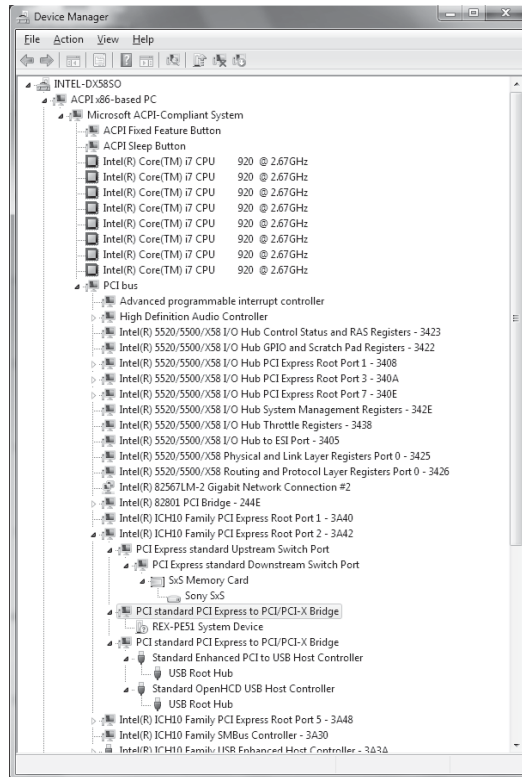


Installation complete.

Select the "Yes, I want to restart my computer now" and click the "Finish" button.



You can confirm installation complete successfully or not by the Device Manager as follows.
 Select "devices by connection" from the view menu.
 Insert ExpressCard(ex.SxS pro).
 If you can find "SxS Memory Card" under the "PCI Express standard Upstream Switch Port", installation complete successfully.



2. Install SxS card driver

Once PE51U driver is installed, you will now need to install the driver for SxS card. The SxS card driver can be found at:



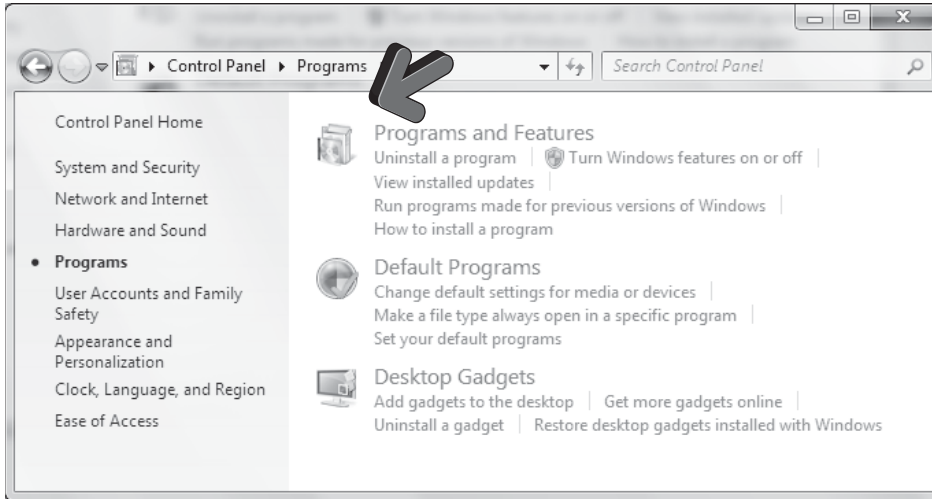
<https://servicesplus.us.sony.biz/sony-software-model-SXSDRIVERS.aspx>

Follow the instructions to install the driver for SxS card.

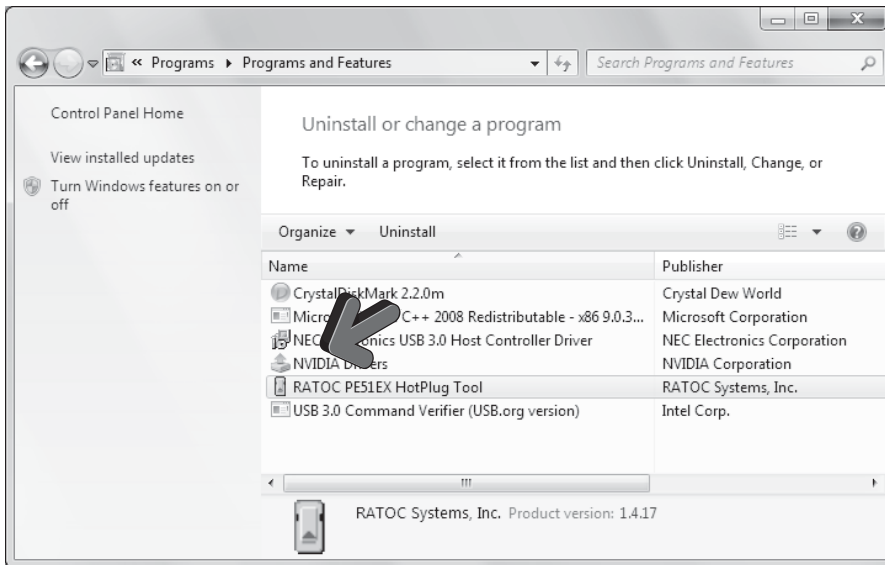
3. Windows Uninstallation

Following steps are example under Windows 7.

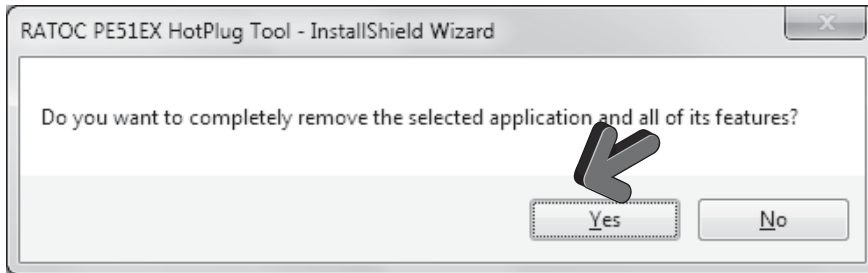
Open "Program" folder under control panel from start menu.
Click the "Programs and Features" icon.



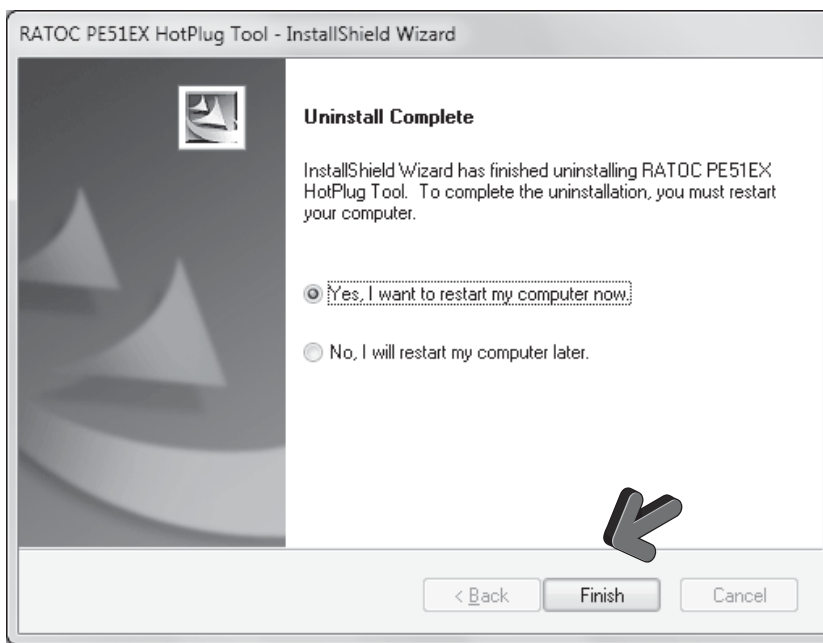
Click the "RATOC PE51EX HotPlug Tool".



Uninstallation will be start. Click the "Yes" button.



Uninstallation complete.
Select the "Yes, I want to restart my computer now" and click the "Finish" button.



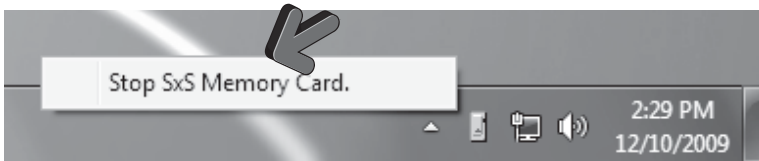
4. Hot Plug Operation

4-1 Install Third Party ExpressCard Driver

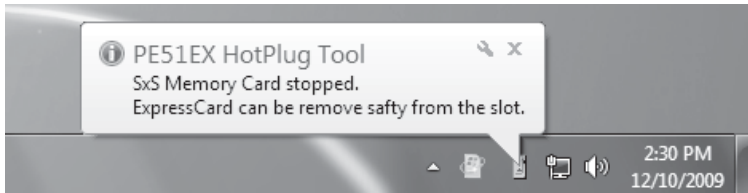
Install ExpressCard driver following 3rd party manufacturer's recommendations. Some ExpressCard manufacturers recommend that you install their software driver(s), if required, prior to insert ExpressCard to ExpressCard slot.

4-2 ExpressCard Removal Operation

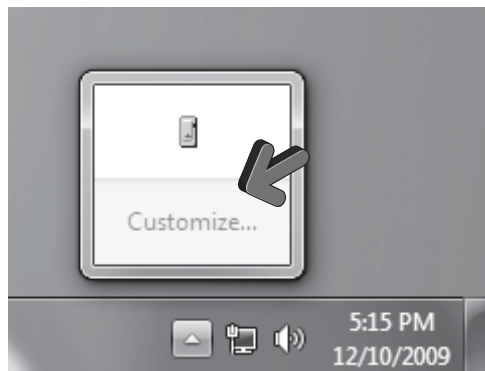
1. You must stop ExpressCard from HotPlug Tool icon menu first before remove ExpressCard from the slot.



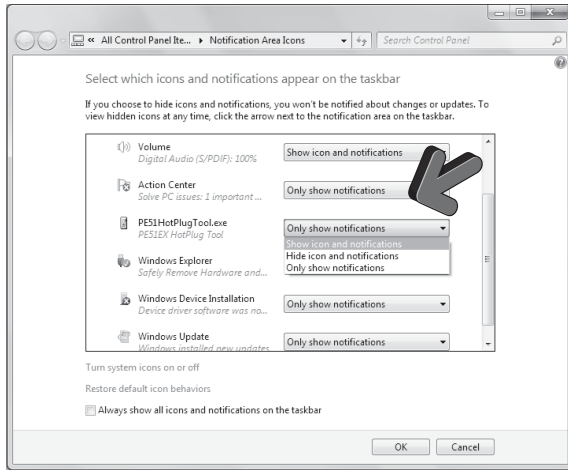
ExpressCard stop balloon message will be displayed. Now you can remove ExpressCard from the slot safely.



※ Under Windows 7 HotPlug Tool icon is hide. You should change the setting to view hide icon at any time from the "Customize..." menu.



Change the setting from "Only show notification" to "Show icon and notifications".



2. Push out the eject lever (①),
push the eject lever (②)
again and pull out the ExpressCard (③).

