



USB2.0 CardBus Host PC Card

CBU2

User's Manual

May 2003

Rev.5.0

 **RATOC Systems, Inc.**

CBU2U

1. Introduction.....	3
1-1. Features	3
1-2.Restrictions	3
1-3. System Requirements	3
2. Before installing... ..	4
Package Confirmation	4
3. Setting up	4
3-1. Installing the driver(Windows 98SE)	5
3-2. Installing the driver(Windows 2000)	9
3-3. Installing the driver(Windows Me)	12
3-4. Installing the driver(Windows XP).....	14
A. Installing the driver in Windows XP with Service Pack 1	14
B. Installing the driver in Windows XP without Service Pack 1	17
3-5. Installing the driver(MacOS X-10.2.1 or later)	20
3-6. Confirming the driver(MacOS 9.2.x)	24
4. Connecting a USB device	26
4-1. Self-power device/Bus-power device	26
4-2. Connecting a Bus-powered type of USB device to the CBU2	26
4-3. Confirming a USB device is recognized	27
5. Removing the CBU2U	28
5-1. Windows 98SE/ME	28
5-2. Windows 2000/XP	28
5-3. Macintosh	29
6. Troubleshooting.....	30
7. Registration and Tech-support	37
7-1. How to Register	37
7-2. Software Update and Support	37
8. Options	38
9. Specifications	39



1. Introduction

This User's Guide describes how to install the RATOC USB2.0 CardBus PC Card (called CBU2 in this User's Guide).

The information in the README.TXT file on the CD-ROM may include the latest information. Be sure to read the file as well.

1-1. Features

- EHCI(USB2.0) and OHCI(USB1.1) compliant host adapter CardBus PC Card.
 - Included original USB2.0 Driver for WindowsXP/Me/2000/98SE and MacOS X.
 - Fully compatible with Microsoft standard USB2.0 driver for Windows XP/2000.
 - Adds two High Speed(480Mbps) USB2.0 ports to your laptop PC or PowerBook.
 - Supports Low/Full/High Speed(1.5/12/480Mbps).
- Switches automatically to the highest speed of the USB device.
- Supports Isochronous transfer and USB2.0 High-Speed HUB(Windows Only).
 - Allows using USB1.1 and USB2.0 peripherals simultaneously.
 - Supports Plug & Play and Hot-Swapping of USB1.1/2.0 device.
 - Available USB Bus Power up to 300mA at two ports.

Cable Power adapter(Sold Separately) is required for 500mA at each port.

- Dongle-less smart design.
- 5 years warranty.

1-2.Restrictions

- When you remove a USB device and connect it again, you have to wait over 3 seconds before you connect it again.
- This driver doesn't support remote wake up from a USB device.
- For MacOS 9.2.x users, CBU2 works as the USB1.1 compatible host adapter with Apple USB Support drivers.

1-3. System Requirements

PC or PowerBook with CardBus-enabled PC Card slot.

- PC: WindowsXP/Me/2000/98SE
- Mac:MacOS X 10.2.1 or later/ 9.2.x or later*

* Except PowerBookG3(November 1997, Machine/Gestalt ID:313).

This model doesn't support CardBus slot. Please check your Machine ID at Apple System Profiler window.PowerBookG3(1998,1999,2000) are required.

* For MacOS 9.2.x users, CBU2 works as the USB1.1 compatible host adapter with Apple USB Support drivers. MacOS X 10.2.1 or later users can use USB2.0 on Mac.

2. Before installing...

Package Confirmation

Check the package contents:

- CBU2 CardBus PC Card
- Software CD-ROM
- User's manual

NOTE

If any of these items are missing from the CBU2 retail package, contact your supplier immediately.

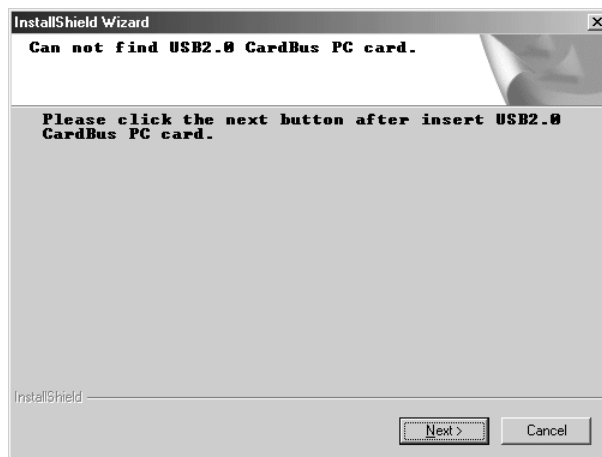
3. Setting up

- A) If you are a Windows 98SE user----- Proceed to Chapter 3-1.
B) If you are a Windows 2000 user----- Proceed to Chapter 3-2.
C) If you are a Windows Me user----- Proceed to Chapter 3-3.
D) If you are a Windows XP user----- Proceed to Chapter 3-4.
E) If you are a MacOS X user----- Proceed to Chapter 3-5.
F) If you are a MacOS 9.2.x user----- Proceed to Chapter 3-6.

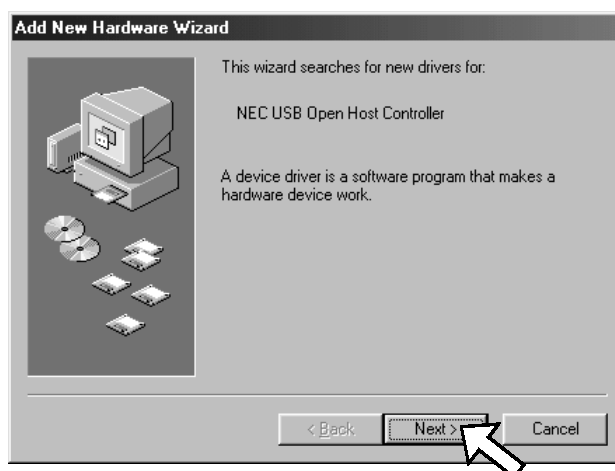
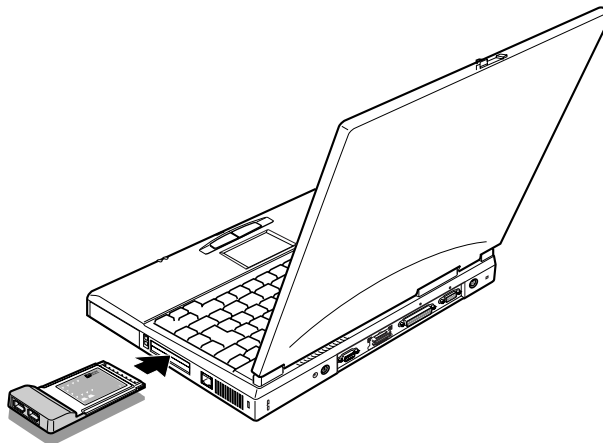
3-1. Installing the driver(Windows 98SE)

When you use Windows 98SE, follow the steps to install the driver.

1. Insert the CBU2 CD-ROM into the CD-ROM drive. The installer will start up automatically.
If the installer won't start up automatically, run **[Setup.exe]** at the CD-ROM.
The following wizard will open. You are prompted to insert the CBU2.



2. Insert the CBU2 PC Card. The following Hardware Wizard will open. Click **[Next]**.



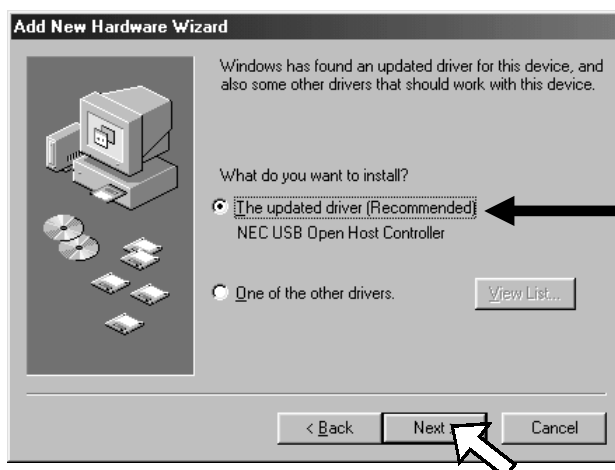
3. Select the **[Search for the best driver for your device(Recommended)]** option and click **[Next]**.



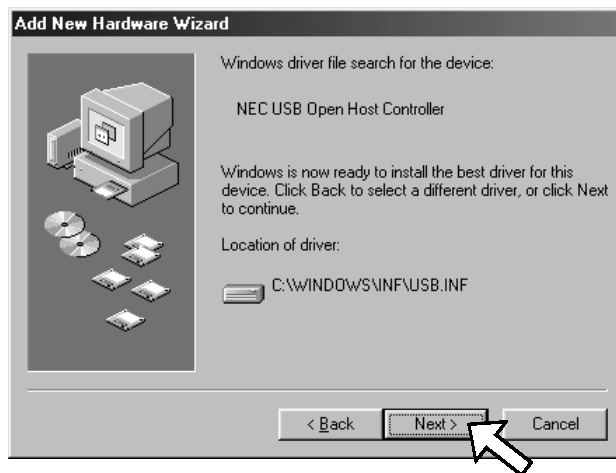
4. Click **[Next]**. Uncheck all the options.



5. Select the **[The updated driver(Recommended) NEC USB Open Host Controller]** option and click **[Next]**.



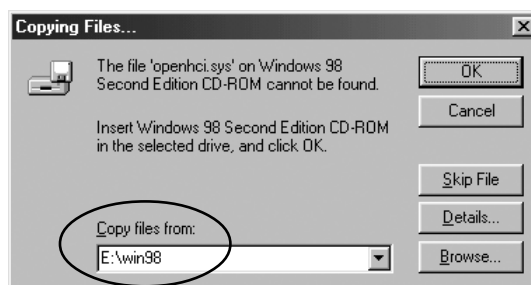
6. Click **[Next]**.



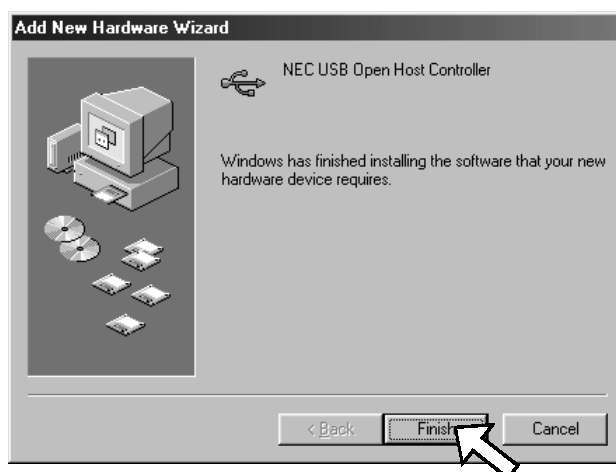
If you are prompted to insert the Windows 98 CD-ROM, insert the CD-ROM and click **[OK]** and insert the Windows 98 CD-ROM



Click the **[Browse]** button and specify a **[Win98]** folder at the CD-ROM and click **[OK]**.



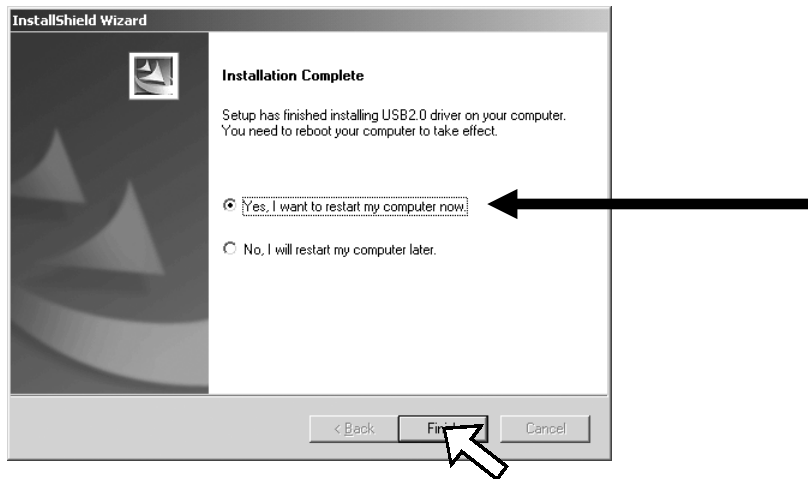
7. Click **[Finish]**.



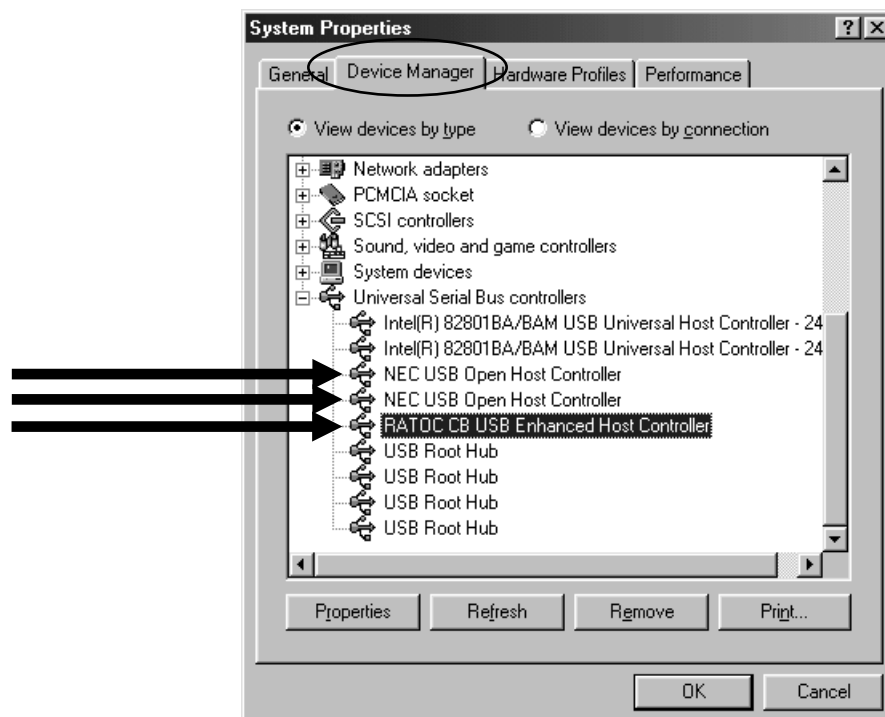
8. **The same hardware wizard shown at step 2 through 7 will open again.**
Follow the same procedure.

And then, click [Next] on the wizard shown in Step 1.

9. Select the [Yes, I want to restart my computer now] option and click [Finish].



10. To verify that the driver is installed correctly, right-click on [My Computer], select [Properties], and then select the [Device Manager] tab.
- If you can find two [NEC USB Open Host Controller] strings and a [RATOC CB USB Enhanced Host Controller] string under the [Universal Serial Bus controllers], the driver is installed correctly.

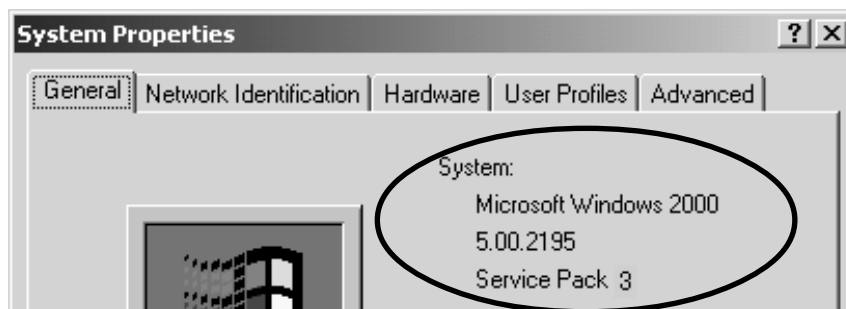


11. To connect a USB device, proceed to **Chapter 4.Connecting a USB device.**
- To remove the CBU2 from the PC Card slot, proceed to **Chapter 5.Removing the CBU2.**

3-2. Installing the driver(Windows 2000)

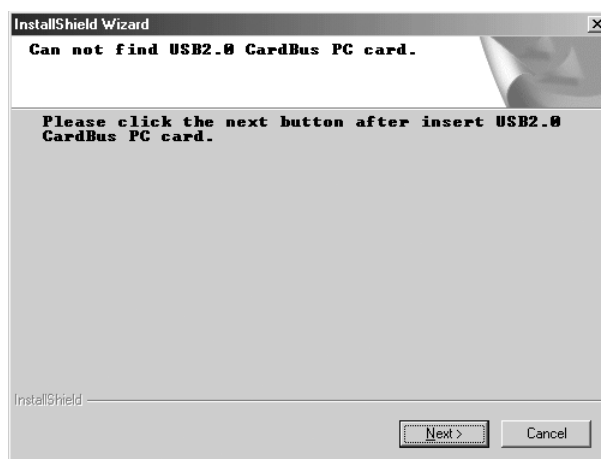
Before you install the driver, make sure Windows 2000 Service Pack 3 is already installed.

To verify Service Pack 3 is installed, right-click on **[My Computer]**, and then select **[Properties]**. If you can find a “Service Pack 3” string as shown below, Service Pack 3 is already installed in your system.

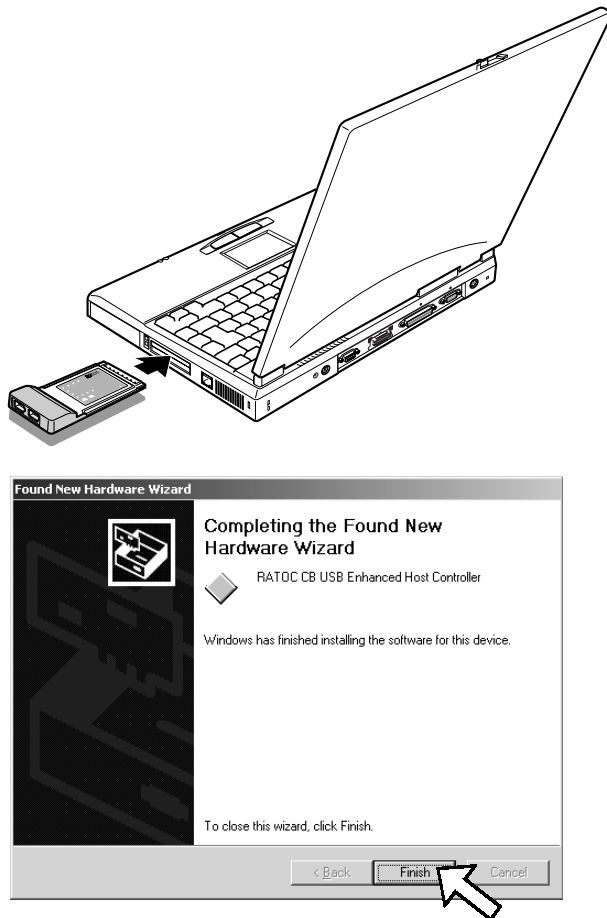


After verifying Service Pack 3 is installed, follow the steps:

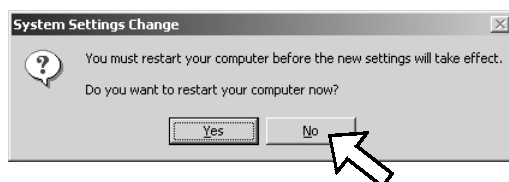
1. Insert the CBU2 CD-ROM into the CD-ROM drive. The installer will start up automatically. If the installer won't start up automatically, run **[Setup.exe]** at the CD-ROM. The following wizard will open. You are requested to insert the CBU2.



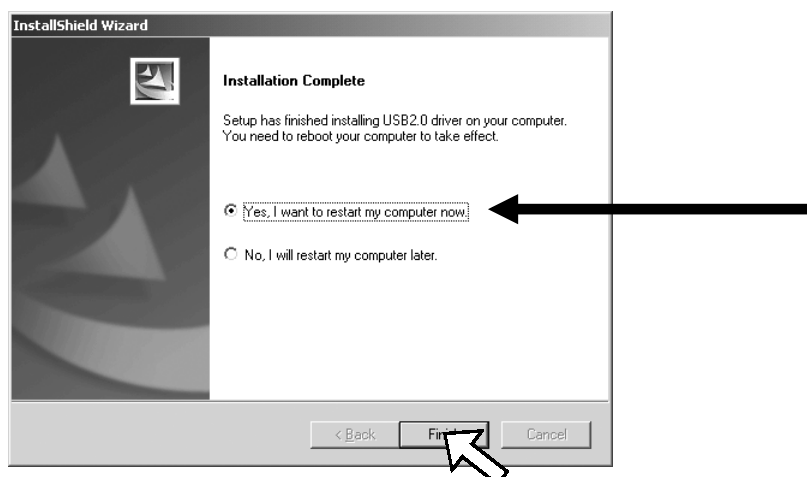
2. Insert the CBU2 PC Card. The following Hardware Wizard will open. Click **[Finish]**.



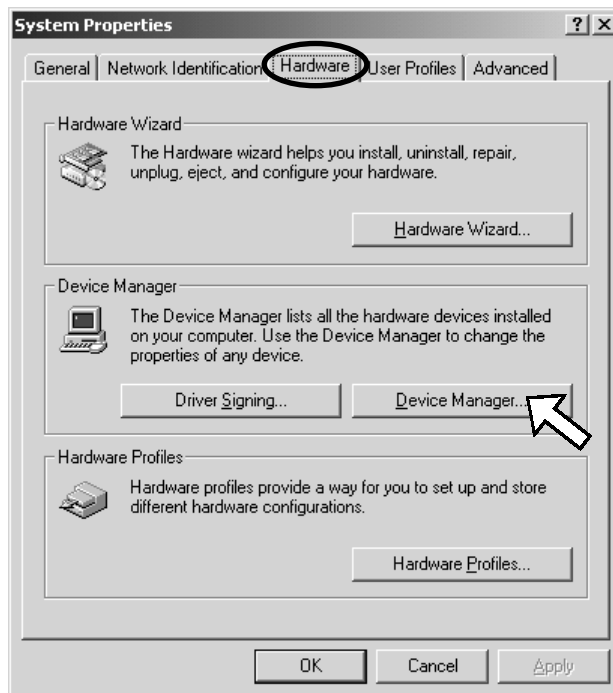
3. You will be prompted to restart to your PC. Click **[No]**, and then click **[Next]** on the wizard shown in Step 1.



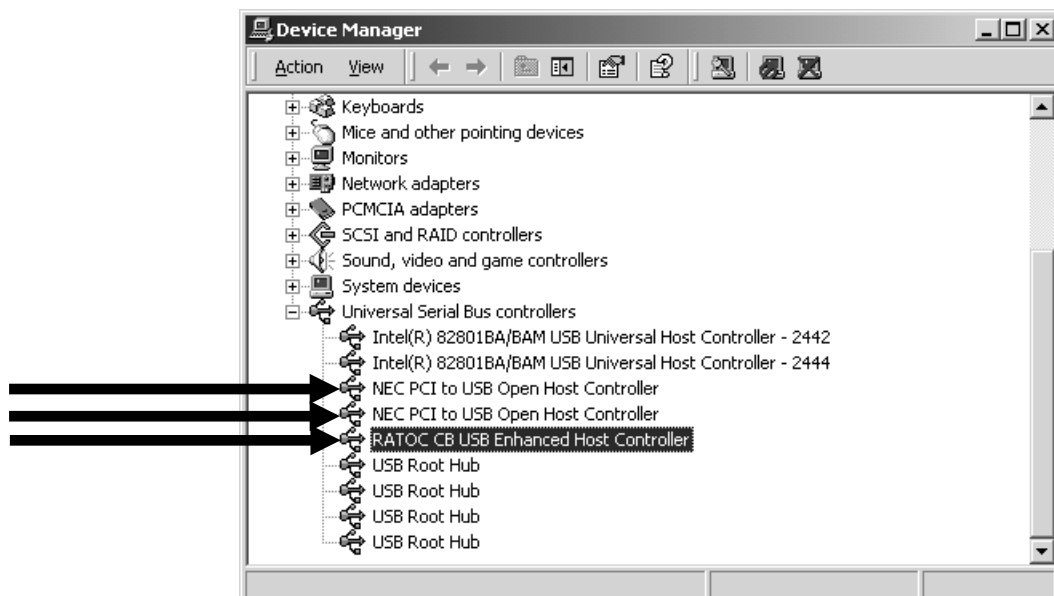
4. Select the **[Yes, I want to restart my computer now]** option and click **[Finish]**.



5. To verify that the driver is installed correctly, right-click on **[My Computer]**, select **[Properties]**, and then select the **[Hardware]** tab. Then, click the **[Device Manager]** button.



If you can find two **[NEC PCI to USB Open Host Controller]** strings and a **[RATOC CB USB Enhanced Host Controller]** string under the **[Universal Serial Bus controllers]**, the driver is installed correctly.

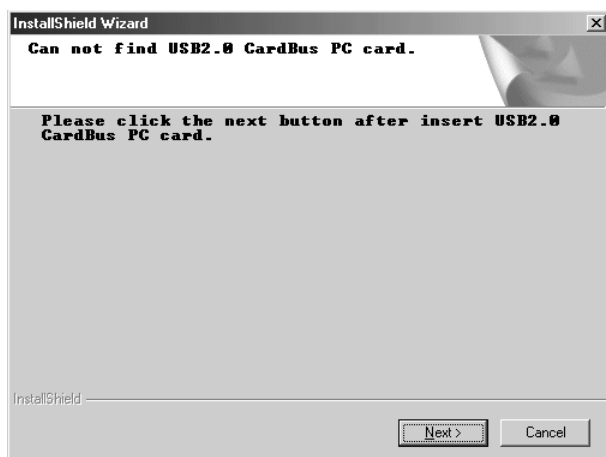


6. To connect a USB device, proceed to **Chapter 4.Connecting a USB device**.
To remove the CBU2 from the PC Card slot, proceed to **Chapter 5.Removing the CBU2**.

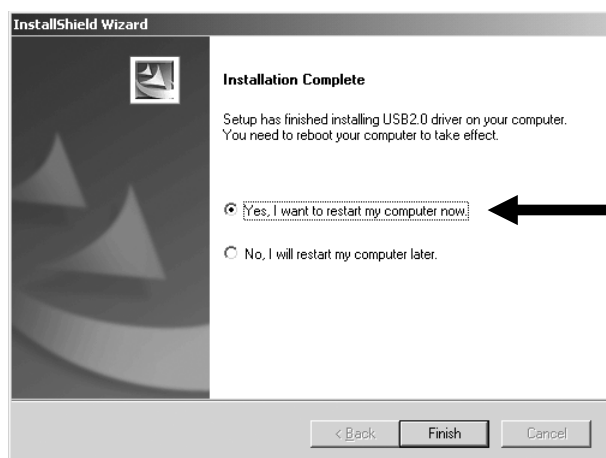
3-3. Installing the driver(Windows Me)

When you use Windows Me, follow the steps to install the driver.

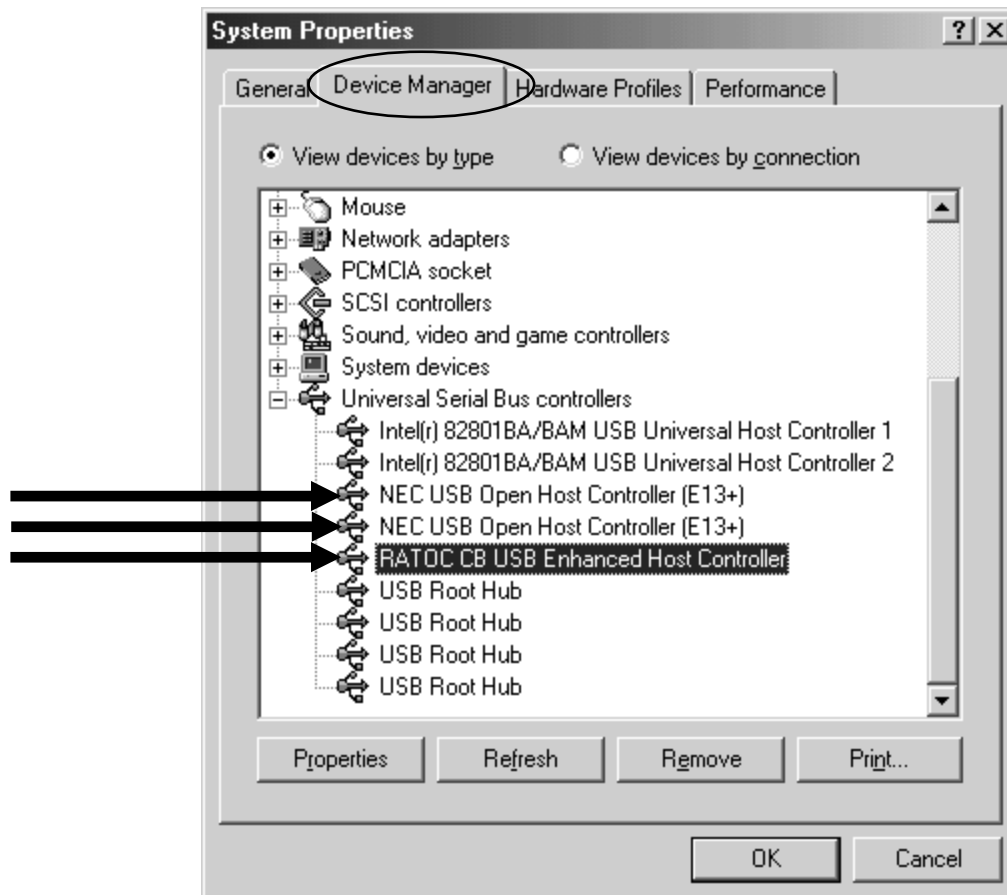
1. Insert the CBU2 CD-ROM into the CD-ROM drive. The installer will start up automatically.
If the installer won't start up automatically, run **[Setup.exe]** at the CD-ROM.
The following wizard will open. You are prompted to insert the CBU2.



2. Insert the CBU2 PC Card. Because some drivers will be installed automatically, wait a few minutes, and then click **[Next]** on the wizard shown on Step 1.
3. Select the **[Yes, I want to restart my computer now]** option and click **[Finish]**.



3. To verify that the driver is installed correctly, right-click on **[My Computer]**, select **[Properties]**, and then select the **[Device Manager]** tab.
- If you can find two **[NEC USB Open Host Controller]** strings and a **[RATOC CB USB Enhanced Host Controller]** string under the **[Universal Serial Bus controllers]**, the driver is installed correctly.



5. To connect a USB device, proceed to **Chapter 4.Connecting a USB device**.
- To remove the CBU2 from the PC Card slot, proceed to **Chapter 5.Removing the CBU2**.

NOTE

You may find a **[RATOC CB USB Enhanced Host Controller]** string with a green ? mark. But this doesn't affect the performance of this CBU2 PC Card.

3-4. Installing the driver(Windows XP)

Before you install the driver, check to see if Windows XP Service Pack 1 is already installed or not. To verify Service Pack 1 is installed, right-click on **[My Computer]**, and then select **[Properties]**. If you can find a “Service Pack 1” string as shown below, Service Pack 1 is already installed in your system.

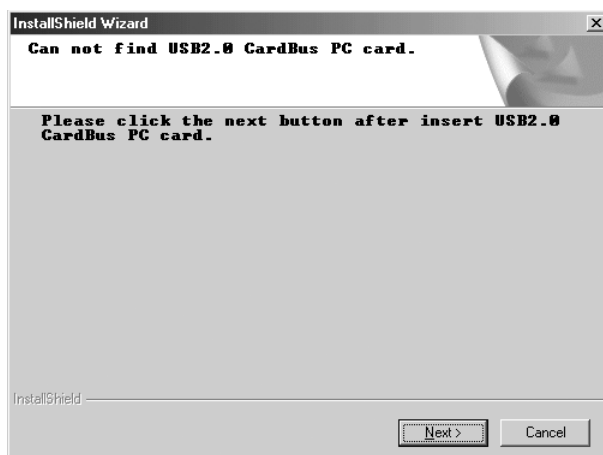


If the Service Pack 1 is already installed in your system, proceed to Section A.

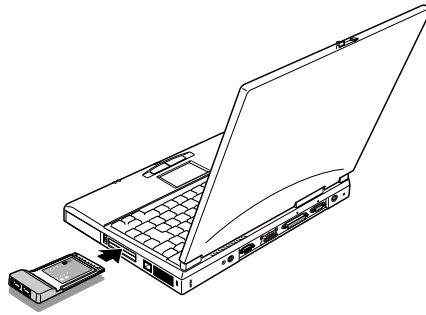
If the Service Pack isn't installed in your system, proceed to Section B.

A. Installing the driver in Windows XP with Service Pack 1

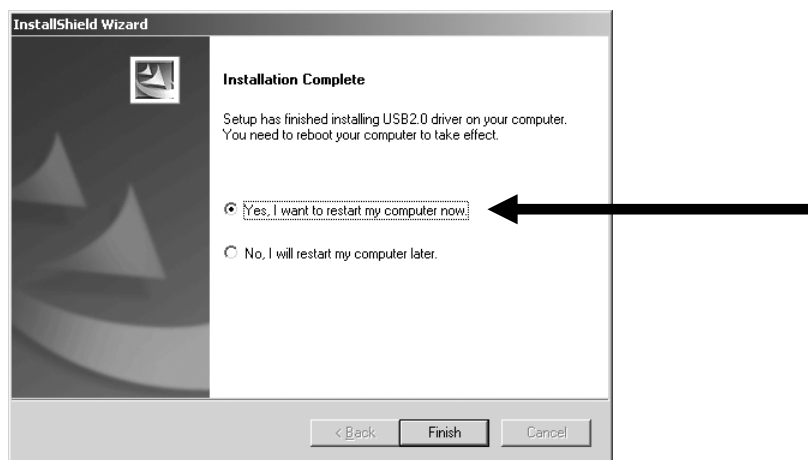
1. If the Service Pack 1 is already installed in your system, insert the CBU2 CD-ROM into the CD-ROM drive. The installer will start up automatically. If the installer won't start up automatically, run **[Setup.exe]** at the CD-ROM. The following wizard will open. You are prompted to insert the CBU2.



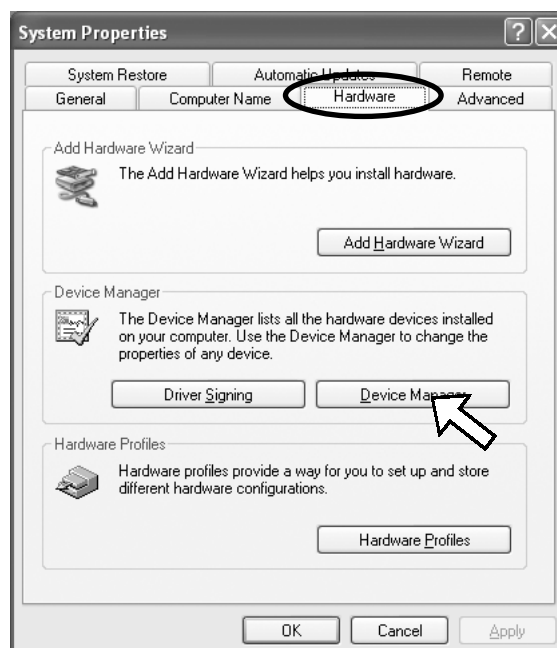
2. Insert the CBU2. Because some drivers will be installed automatically, wait a few minutes, and then click **[Next]** on the wizard shown on Step 1.



3. Select the **[Yes, I want to restart my computer now]** option and click **[Finish]**.



4. To verify that the driver is installed correctly, right-click on **[My Computer]**, select **[Properties]**, and then select the **[Hardware]** tab. Then, click the **[Device Manager]** button.



If you can find two [NEC PCI to USB Open Host Controller] strings and a [NEC PCI to USB Enhanced Host Controller(Bn)(RATOC)] string(n is a number) or a [Standard Enhanced PCI to USB Host Controller(RATOC)] string(n is a number) under the [Universal Serial Bus controllers] as shown Fig1 or Fig2, the driver is installed correctly.

Fig1

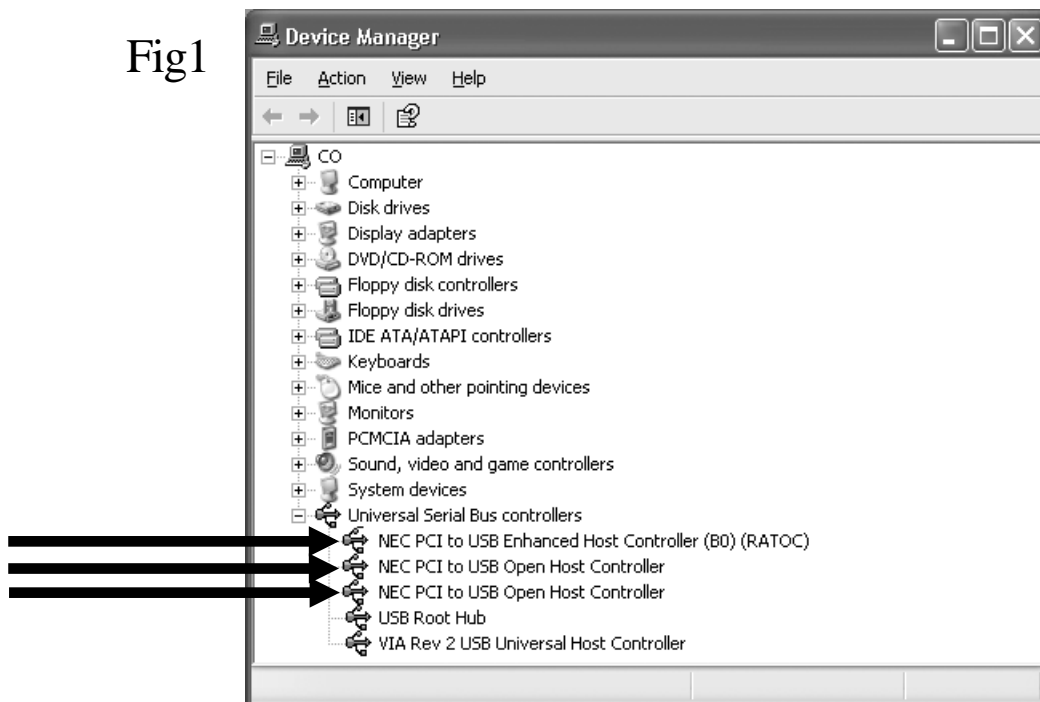
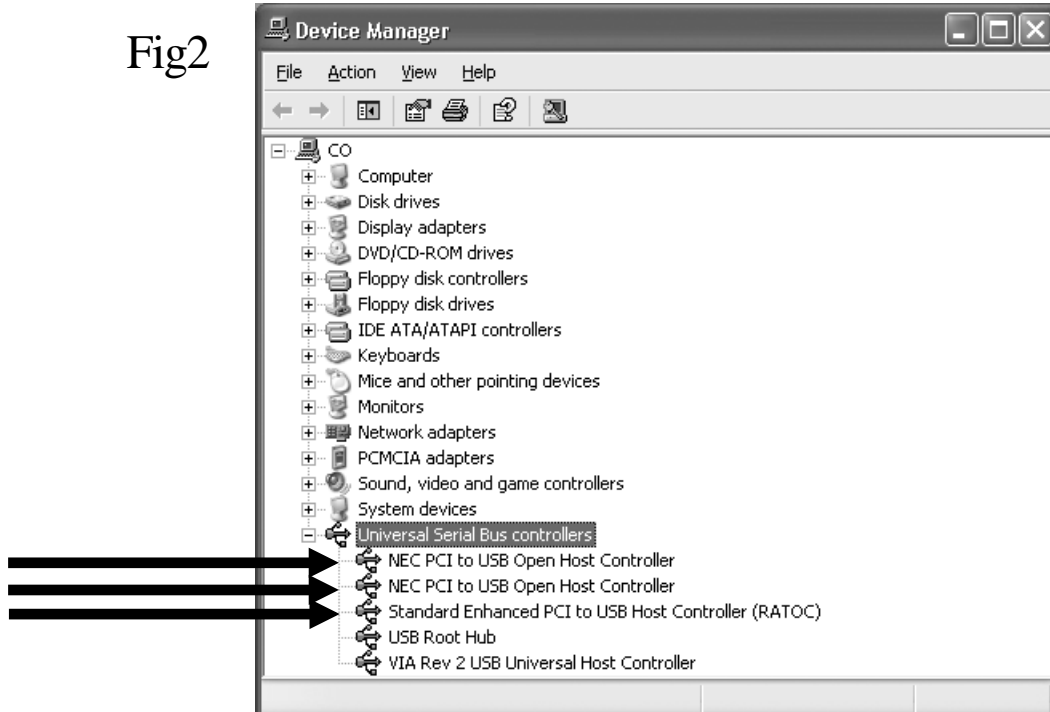


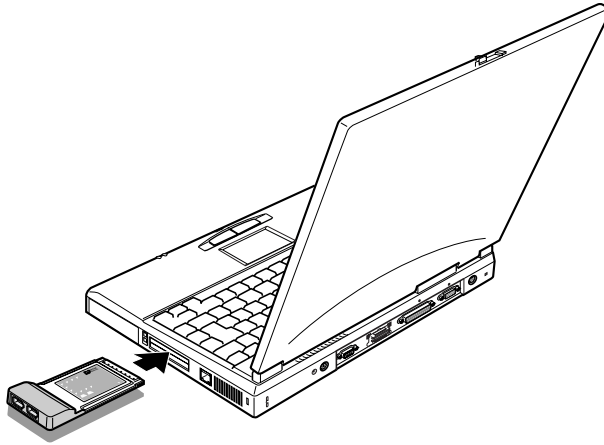
Fig2



4. To connect a USB device, proceed to **Chapter 4.Connecting a USB device.**
To remove the CBU2 from the PC Card slot, proceed to **Chapter 5.Removing the CBU2.**

B. Installing the driver in Windows XP without Service Pack 1

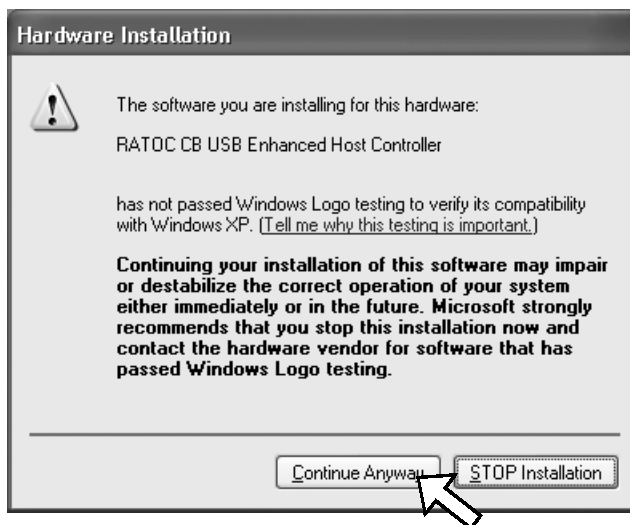
1. Insert the CBU2.



2. The following wizard will open. Select the **[Install the software automatically (Recommended)]** option and insert the bundled CD-ROM.



3. The following wizard will open. Click [**Continue Anyway**].



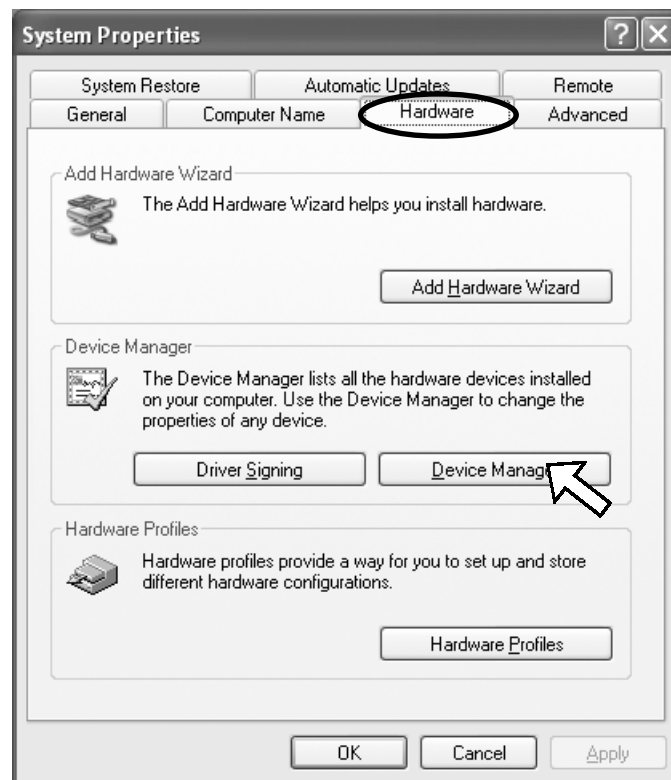
4. The following wizard will open. Click [**Finish**].



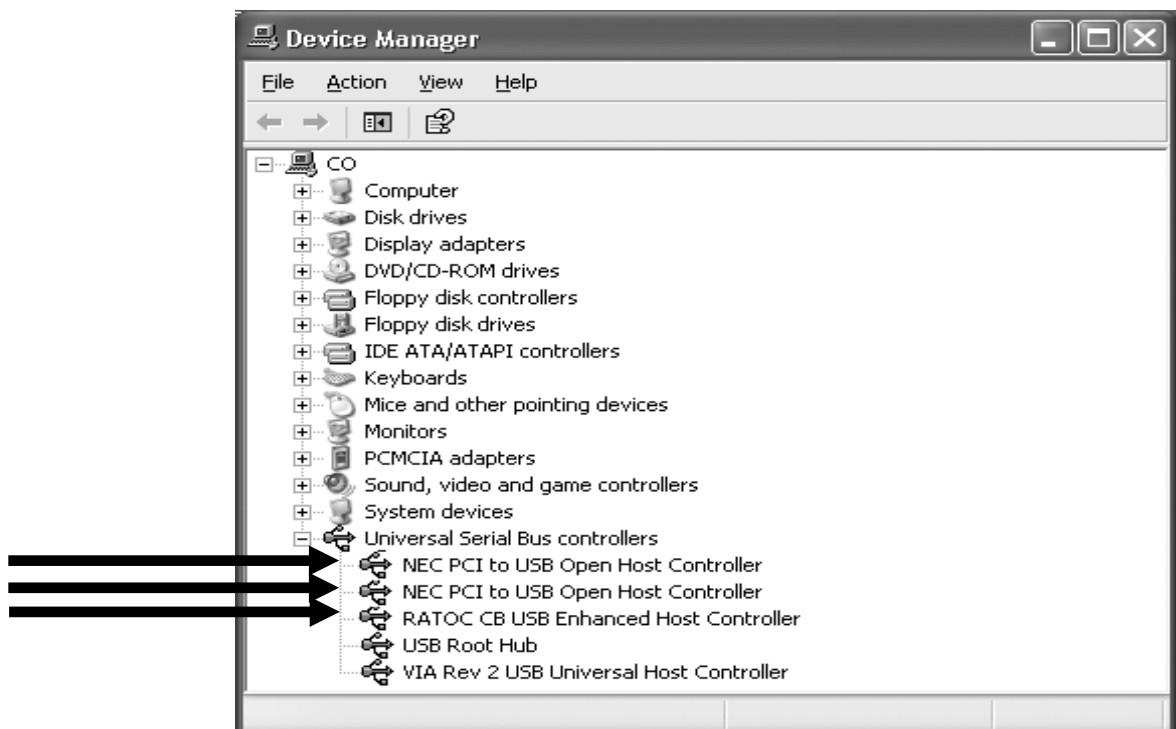
5. You will be prompted to restart your PC. Click [**Yes**].



5. To verify that the driver is installed correctly, right-click on **[My Computer]**, select **[Properties]**, and then select the **[Hardware]** tab. Then, click the **[Device Manager]** button.



If you can find two **[NEC PCI to USB Open Host Controller]** strings and a **[RATOC CB USB Enhanced Host Controller]** string under the **[Universal Serial Bus controllers]**, the driver is installed correctly.



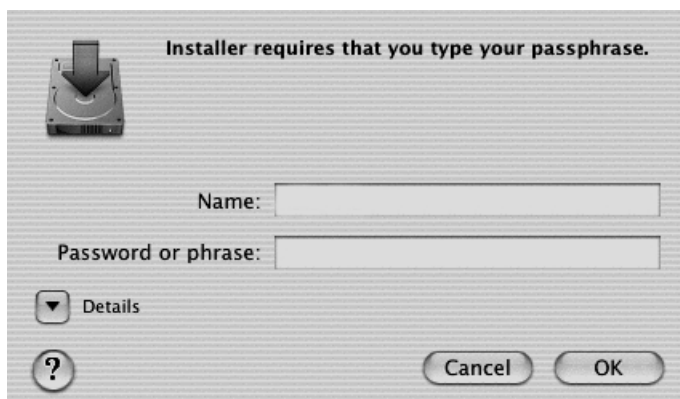
6. To connect a USB device, proceed to **Chapter 4.Connecting a USB device**.
To remove the CBU2 from the PC Card slot, proceed to **Chapter 5.Removing the CBU2**.

3-5. Installing the driver(MacOS X-10.2.1 or later)

1. Insert the CBU2 CD-ROM into the CD-ROM drive. Double-click on the **USBHCIDriver.pkg** icon at the CD-ROM. The following window will appear.



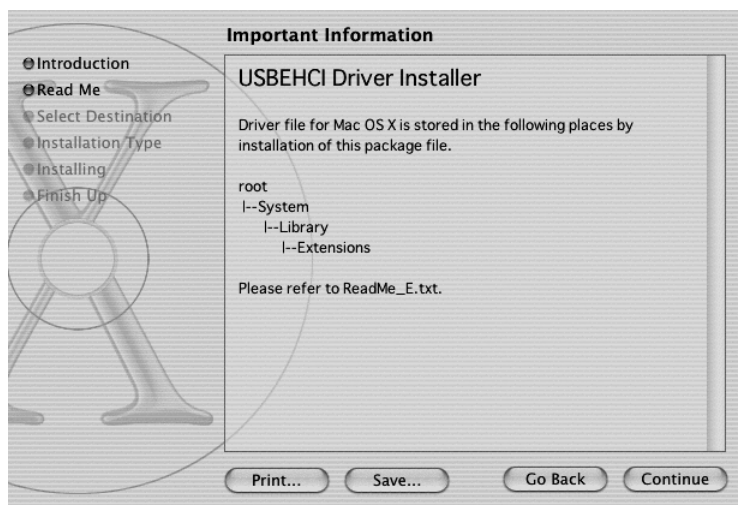
2. You are prompted to type your name and password. Type them and click **[OK]**.



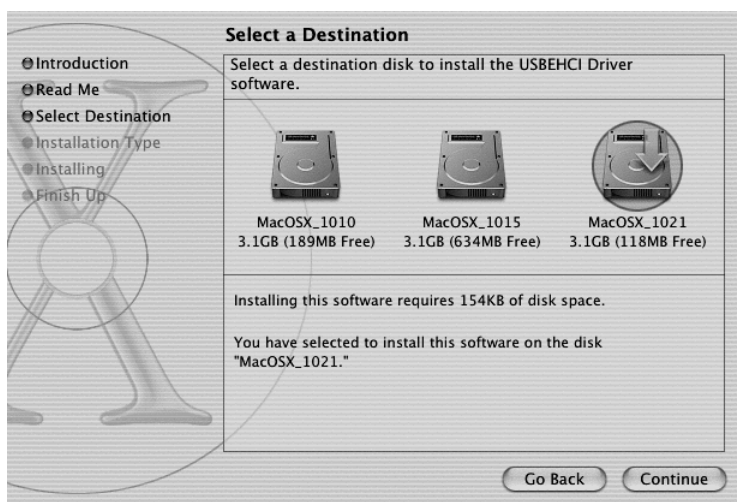
3. Click **[Continue]**.



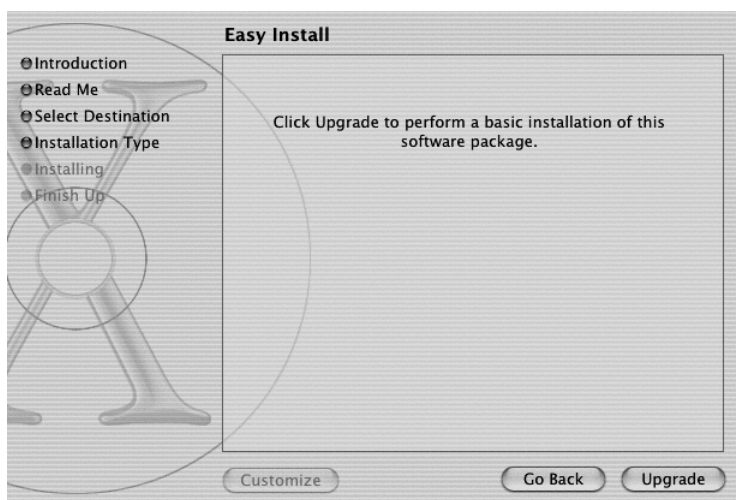
4. Important Information will appear. Click **[Continue]**.



5. Select a destination. Click **[Continue]**.



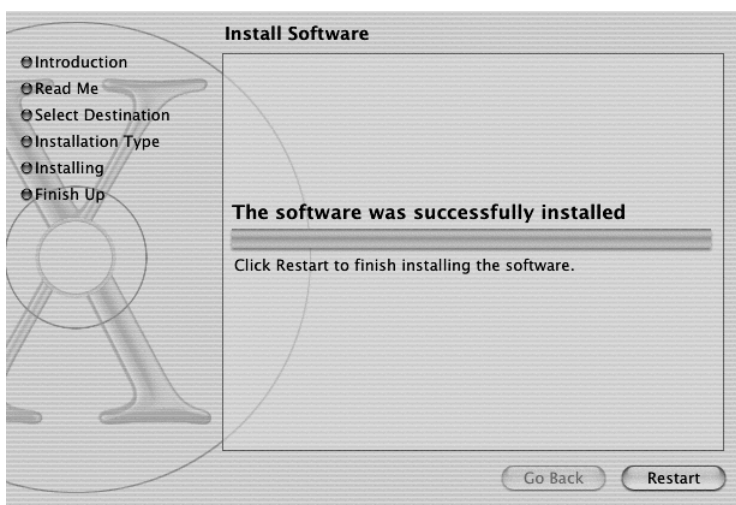
6. Click **[Install]** or **[Upgrade]**.



7. The following warning message will appear. Click [**Continue Installation**].



8. When the installation has completed, the following window will appear. Click [**Restart**].

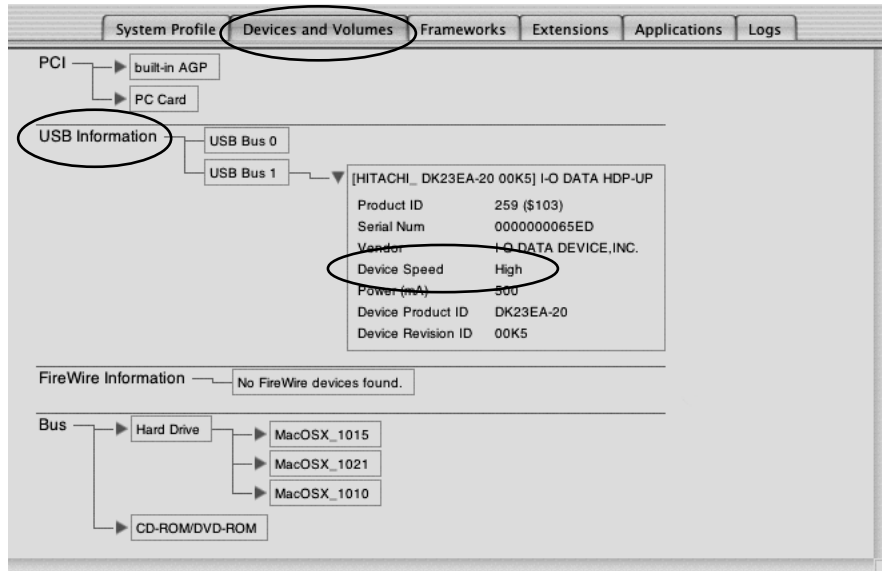


9. You have completed the installation of the USB2.0 driver. Insert the CBU2 into the PC Card slot.

To connect a USB device, proceed to **Chapter 4.Connecting a USB device.**

To remove the CBU2 from the PC Card slot, proceed to **Chapter 5.Removing the CBU2.**

10. To confirm the CBU2 runs as USB2.0 interface, connect a USB2.0 device and start **Apple System Profiler** at the [Utilities] folder at the [Applications] folder. Then, click the [Devices and Volumes] tab. Find the USB2.0 device information shown at [USB Information] string. If you can find a [High] string at the [Device Speed], the CBU2 runs as a USB2.0 interface. If you can't, the CBU2 runs as a USB1.1 or 1.0.



Uninstalling MacOS X driver

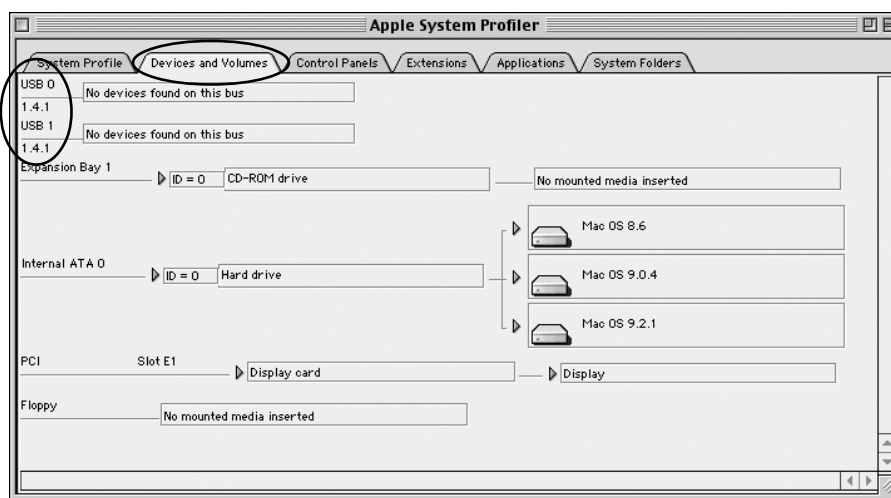
To uninstall the MacOS X driver, follow the steps:

1. Start **Terminal** application at the **Utilities** folder at the **Applications** folder.
2. Drag and drop **cbu2_rm.sh** at the bundled CD-ROM onto the terminal.
3. Click the terminal to get it active and hit **Return** key on the keyboard.
4. You are prompted to enter your password. Enter your password.
5. Finally you must restart the system for your changes to take effect.

3-6. Confirming the driver(MacOS X 9.2.x)

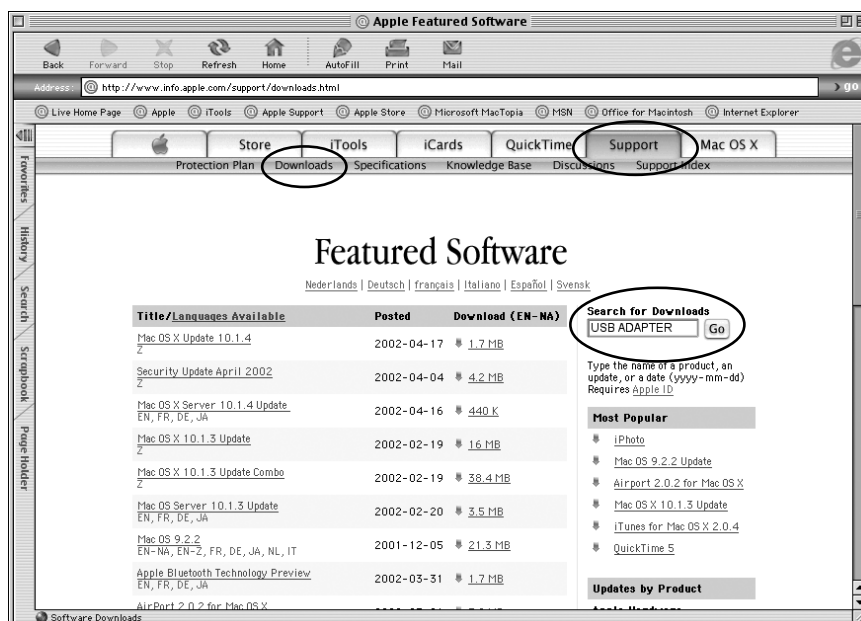
The CBU2 on MacOS 9.2.x doesn't support USB2.0 High speed. The CBU2 on MacOS 9.2.x works as the USB1.1 compatible host adapter. To confirm the driver for USB1.1 is installed in MacOS 9.2.x, check the following:

Open [Apple System Profiler] from the Apple menu and then click the [Devices and Volumes]. If you can find a "USB" string as shown below, you can use the CBU2
To connect a USB device, proceed to **Chapter 4.Connecting a USB device.**
To remove the CBU2 from the PC Card slot, proceed to **Chapter 5.Removing the CBU2.**

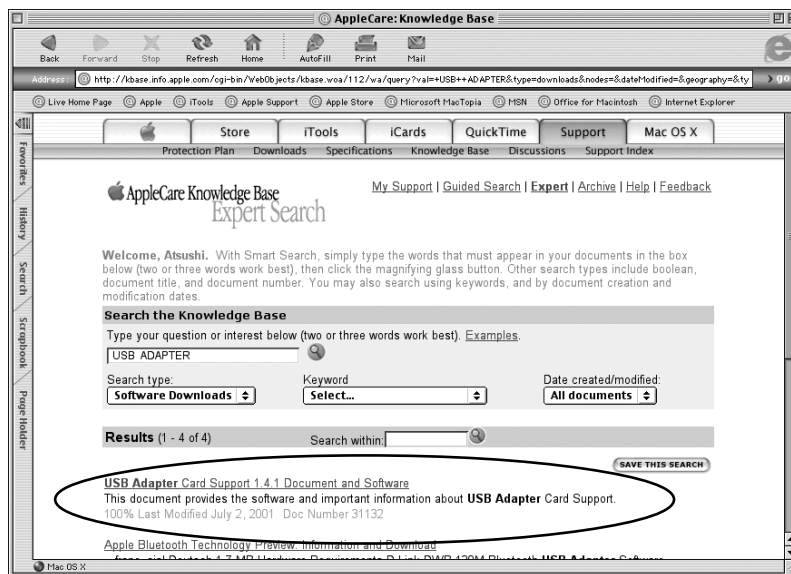


If you can't find the string, you need to install USB driver available through Apple web site.
To install the USB driver through Apple web site, follow the steps 1-6:

1. Access to Apple web site(www.apple.com) and click the [Support] tab. Then, click [Downloads] and type in [USB Adapter] at Search for Downloads box. Click the [Go] button.



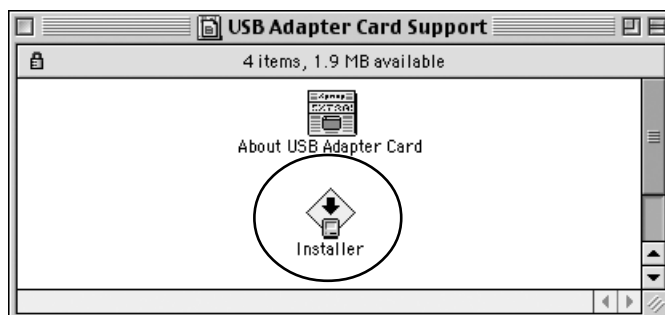
2. You can find **USB Adapter Card Support 1.4.1 Document and Software**. Double-click it to download it. [USB Card Support 1.4.1.smi] will be downloaded.



3. Double-click [USB Card Support 1.4.1.smi]. Software License Agreement window will open. If you agree with it, click [Agree]. The following [USB Adapter Card Support] will appear. Double-click it.



4. The following window will open. Double-click the [Installer] icon.



5. The following window will open. Click the [Install] button.



6. The window saying [Installation was successful] will open. Click the [Quit] button. Your Mac now has been ready to use the CBU2. To connect a USB device, proceed to **Chapter 4. Connecting a USB device**. To remove the CBU2 from the PC Card slot, proceed to **Chapter 5. Removing the CBU2U**.

4. Connecting a USB device

4-1. Self-power device/Bus-power device

There are two kinds of USB devices:

1.Self-power device:

This type of USB device gets power necessary to work itself through an outlet.

2.Bus-power device:

This type of USB device gets power necessary to work itself through an USB cable.

Each USB device of this type has its own current necessary to work itself. The maximum current is 500mA. Here is an example(Contact your device manufacturer for other devices).

Device	Manufacturer	Model name	consumption current
•Mouse	Microsoft	IntelliMouse	100mA
•ImageScanner	Cannon	FB636U/630U	500mA
•CompactFlash Reader	RATOC	CF03U	100mA
•SmartMedia Reader	RATOC	SMA03U	100mA

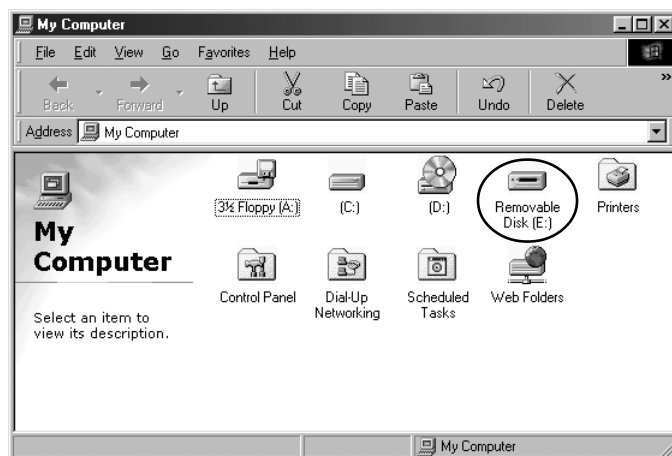
4-2. Connecting a Bus-powered type of USB device to the CBU2

The CBU2 has two USB ports and these ports can provide 300mA in total. If you connect our AC Adapter(Solf Separately) to the CBU2, the two ports can provide 500mA at each port. If you connect a Bus-powered type of USB device of which consumption current is over 300mA, you need to use the AC Adapter(Sold Separately. Refer to Chapter 8 for purchase information). You don't need to purchase it if you connect a Bus-powered type of USB device of which consumption current is less than 300mA. Here is an example.

- If you connect FB636U/630U made by Cannon described above, its consumption current exceed 300mA. Therefore, you need to use the AC Adapter to provide 500mA.
- If you connect CF03U and SMA03U simultaneously, their consumption current is 200mA in total. Therefore, you don't need to use the AC Adapter. You can use them without the AC Adapter.

4-3. Confirming a USB device is recognized

If you connect a USB storage device such as a Hard Disk Drive, Compact Flash Adapter, SmartMedia Adapter, MO drive on Windows, you can find its icon in **[My Computer]**.

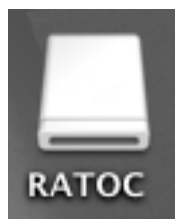


(Windows)

If you connect such a device on Mac, its icon will be mounted on desktop.



(Mac OS 9.x)



(Mac OS X)

5. Removing the CBU2U

If you remove the CBU2U, you need to follow the steps:

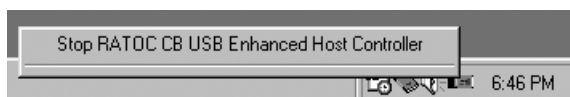
5-1. Windows 98SE/ME

If you remove the CBU2 on Windows 98SE/Me, you need to follow the steps:

1. Click the red CBU2 icon at the taskbar in the lower right-hand corner of the desktop.



2. The following pop-up menu will appear. Select it.



3. The following window will appear. Click [OK]. You can now safely remove the CBU2.



5-2. Windows 2000/XP

If you remove the CBU2 on Windows 2000/XP, you need to follow the steps:

1. Click the PC Card icon with a green arrow at the taskbar in the lower right-hand corner of the desktop.

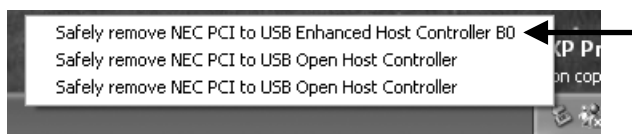


(Windows XP)

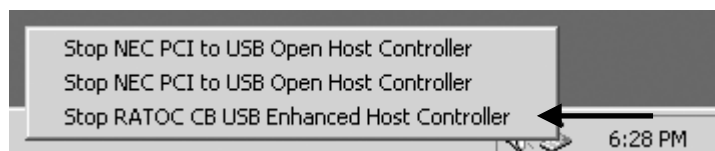


(Windows 2000)

2. The following pop-up menu will appear. Select [NEC PCI to USB Enhanced Host Controller] or [RATOOC CB USB Enhanced Host Controller].



(Windows XP)



(Windows 2000)

3. The following window will appear. You can now safely remove the CBU2.



(Windows XP)



(Windows 2000)

5-3. Macintosh

If you remove the CBU2 on Mac OS 9.2.x, you need to follow the steps:

- 1.If a USB device icon is mounted on the desktop, move it to the Trash icon.
- 2.Move the CBU2 icon to the Trash icon.
- 3.Remove the CBU2 icon from the PC Card slot.



CBU2 icon

If you remove the CBU2 on Mac OS X, you need to follow the steps:

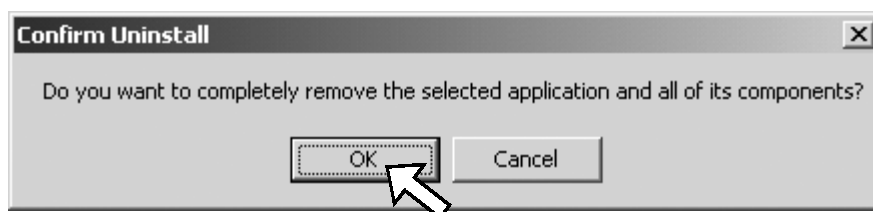
- 1.If a USB device icon is mounted on the desktop, move it to the Trash icon.
- 2.Shut down your Mac.
- 3.Remove the CBU2 from the PC Card slot.

6. Troubleshooting

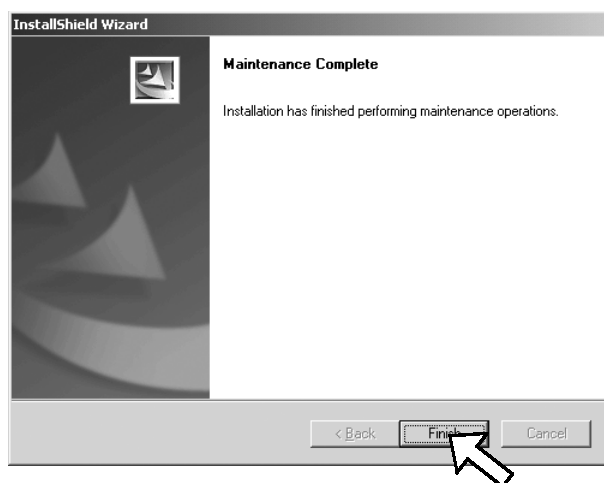
Using Microsoft USB2.0 driver with Windows 2000

If you want to use Microsoft USB2.0 driver with Windows 2000 after installing the driver as described in Chapter 3-2, follow the steps:

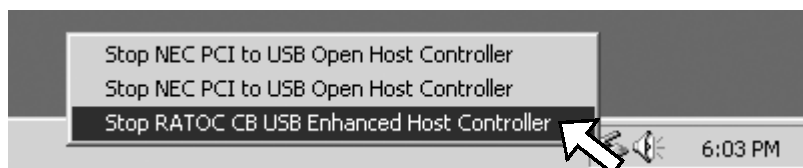
1. Insert the CBU2 CD-ROM into the CD-ROM drive. The installer will start up automatically. If the installer won't start up automatically, run **[Setup.exe]** at the CD-ROM. The following window will appear. Click **[OK]**.



2. The following window will appear. Click **[Finish]**.



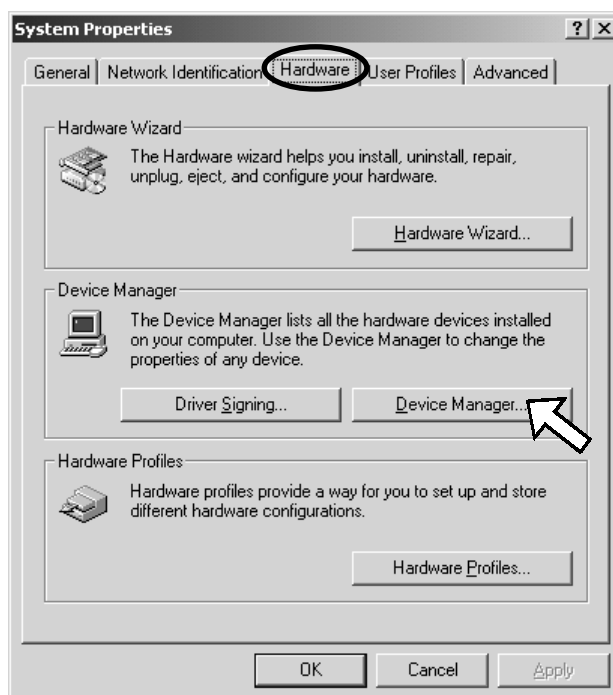
3. Click the PC Card icon shown at the lower right corner and select **[Stop RATOC CB USB Enhanced Host Controller]**.



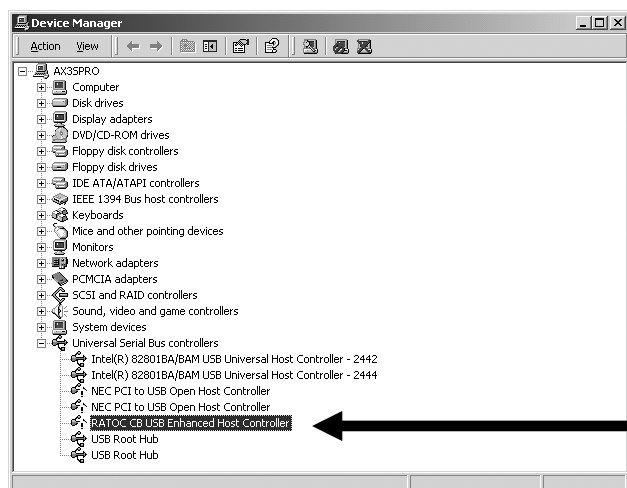
4. The following message saying you can remove the PC Card safely will appear.



5. Right-click on **[My Computer]**, select **[Properties]**, and then select the **[Hardware]** tab. Then, click the **[Device Manager]** button.



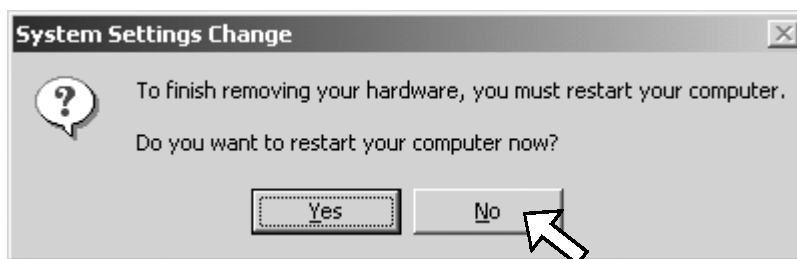
6. Select the **[RATOC CB USB Enhanced Host Controller]** string under the **[Universal Serial Bus controllers]** and hit the delete key.



7. The following warning message will appear. Click **[OK]**.



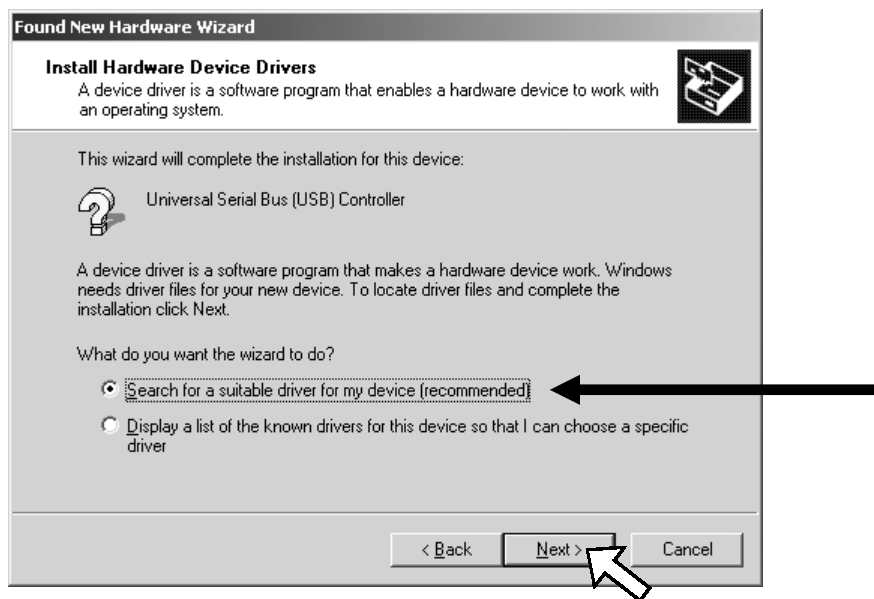
8. The following warning message will appear. Click **[No]**.



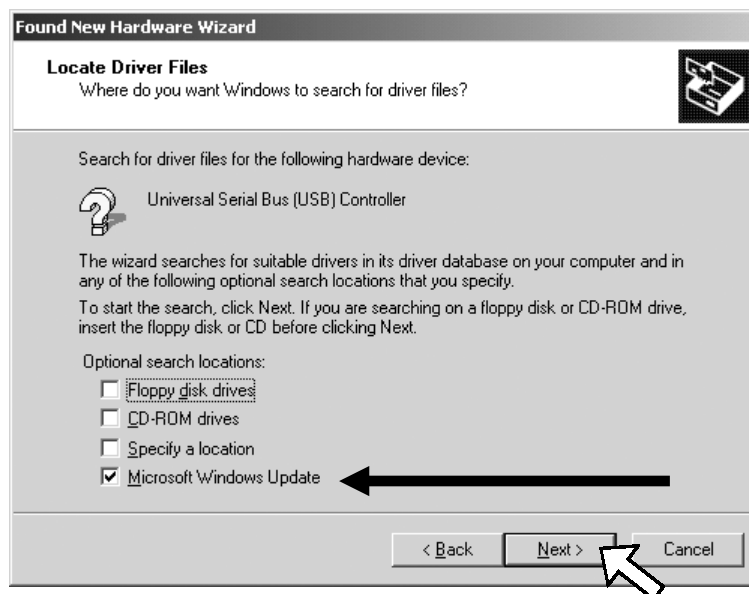
9. Delete each of the two **[NEC PCI to USB Open Host Controller]** strings in the same way as described in Step 6 and 8.
10. Remove the CBU2 from the PC Card slot and insert it again. The following window will appear. Click **[Next]**.



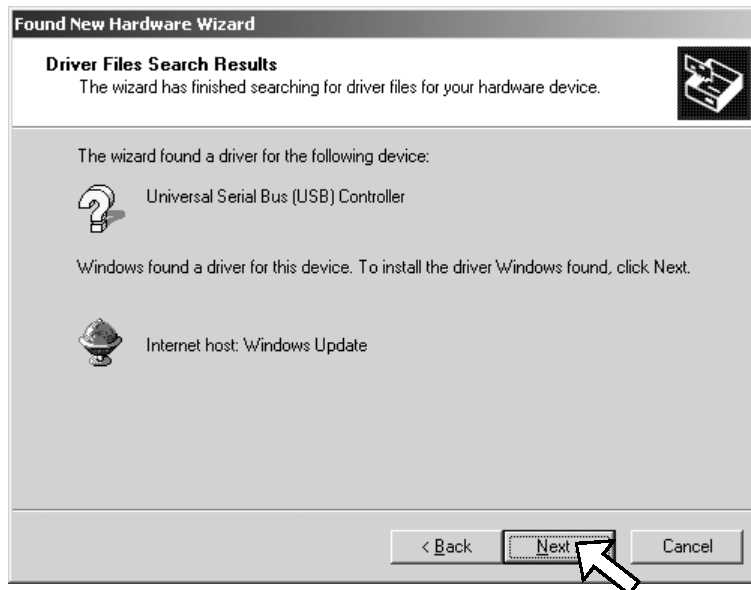
11. The following window will appear. Select the **[Search for a suitable driver for my device (recommended)]** option and click **[Next]**.



12. The following window will appear. Select the **[Microsoft Windows Update]** option and click **[Next]**.



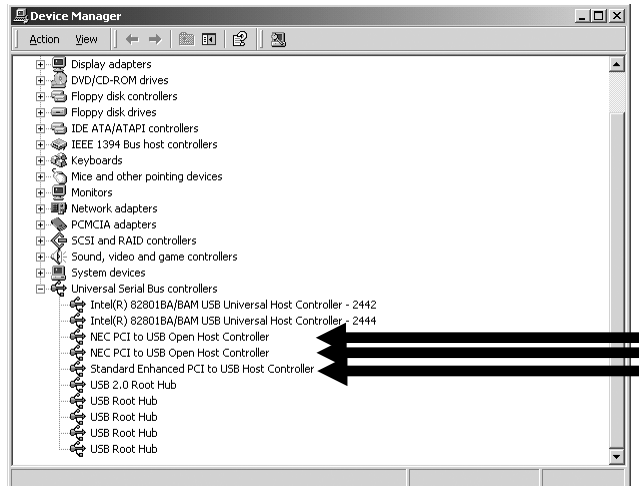
13. The following window will appear. Click **[Next]**.



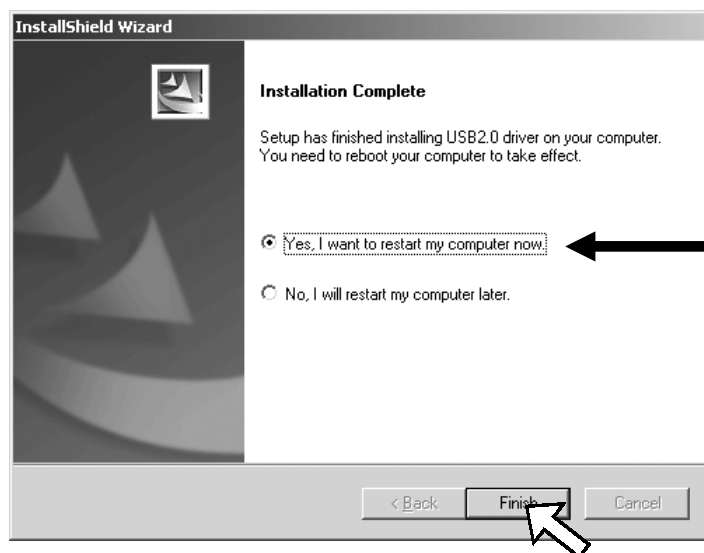
14. The following window will appear. Click **[Finish]**.



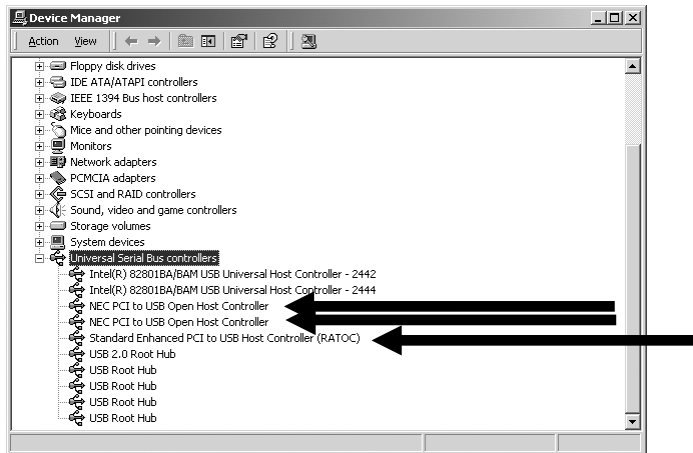
15. If you can find two **[NEC PCI to USB Open Host Controller]** strings and a **[Standard Enhanced PCI to USB Host Controller]** string under the **[Universal Serial Bus controllers]**, you are successful in installing Microsoft USB2.0 driver. It is highly recommended that the Microsoft USB2.0 driver should be updated by our driver as follows(Step 16 to Step17).



16. Insert the CBU2 CD-ROM into the CD-ROM drive. The installer will start up automatically. If the installer won't start up automatically, run **[Setup.exe]** at the CD-ROM. The following window will appear. Select the **[Yes, I want to restart my computer now]** option and click **[Finish]**.



17. If you can find two **[NEC PCI to USB Open Host Controller]** strings and a **[Standard Enhanced PCI to USB Host Controller(RATOC)]** string under the **[Universal Serial Bus controllers]**, you are successful in updating the Microsoft USB2.0 driver.



7. Registration and Tech-support

7-1. How to Register

We highly recommend to register yourself as our customer through our on-line registration.

1. On the Internet, access our site (<http://www.ratocsystems.com/english/>)
2. Follow window menu guide to register.
3. Fill out and submit the registration form.

7-2. Software Update and Support

-Driver Update-

The latest driver or utility software are subject to change for improvement or bug fix.

You can download the latest version from our web site.

(<http://www.ratocsystems.com/english/>)

-Technical Support-

You can get a Tech support from RATOC at the following.

(Open Monday - Friday, 9:30A.M. to 5:00P.M(PST))

RATOC Systems International,Inc. Tech support

Address: 1933 O'Toole Avenue Suite A109

SanJose, CA 95131, U.S.A.

Phone : (408)955-9400

Fax : (408)955-9402

E-mail : int-support@rexpccard.co.jp

Web : <http://www.ratocsystems.com/english/>

NOTE:

Please include the following information to help us to assist you in the event of a problem:

- Our product name, serial number, and product description
- Host Computer Name, OS version
- Driver version

8. Options

Option is available (sold separately) at the web site:

1. <http://www.ratocsystems.com/english/>

2. <http://www.firewireshop.com>

-USB2-01 (USB2.0 cable(3 feet))

-AC05 (AC adapter)

If you have any questions about the option, contact to:

RATOC Systems International, Inc. Tech Support

TEL : (408)955-9400

FAX: (408)955-9402

E-mail: int-support@rexpccard.co.jp

9. Specifications

Model Name	CBU2
Card Type	USB2.0 CardBus PC Card
Interface	USB2.0
USB data transfer rate	480/12/1.5 Mbps(HS/FS auto-detection)
Environment	Operating temperature 0°C/32°F - 55°C/131°F Relative humidity 95% Max (noncondensing)
Connector	USB2.0 Type A x 2 port / DC jack
Power Consumption	+3.3V(CardBus Slot) 190mA(idle), 310mA(Max)
USB Bus Power capability	+5V 300mA(2ports, Max)
Dimensions	127mm/5in.(L) x 54mm/2.13in.(W) x 14.90mm/0.59(H) mm

Appendix

Copyright

©2003 RATOC Systems, Inc. All rights reserved. No part of this publication may be reproduced, stored in a retrieval system, or transmitted in any form or by any means (electronic, mechanical, photocopying, recording or otherwise) without the prior written consent of RATOC Systems, Inc.

Trademarks

- Windows is a trademark of Microsoft Corporation, registered in the U.S. and other countries.
- USB2.0 Hi-Speed logo is a registered trademark of Universal Serial Bus Implementers Forum.
- `CardBus`, PC Card logo and CardBus logo mark are registered trademarks of PCMCIA/JEITA.
- Other logo, brand, product names may be registered trademarks or trademarks of their respective holders.

Changes

The information in this User's Manual is furnished for information only and is subject to change without notice. RATOC Systems, Inc. reserves the right to make changes in the product design or product improvements without reservations and without notification to its users. RATOC Systems, Inc. assumes no responsibility or liability for any errors or inaccuracies that may appear in this document.

Regulatory Compliance Statements

I) FCC Compliance Statement

This equipment has been tested and found to comply with the limits for a Class B digital device, pursuant to Part 15 of the FCC Rules. These limits are designed to provide reasonable protection against harmful interference in a residential installation. This equipment generates, uses and can radiate radio frequency energy and, if not installed and used in accordance with the instructions, may cause harmful interference to radio communications. However, there is no guarantee that interference will not occur in a particular installation. If this equipment does cause harmful interference to radio or television reception, which can be determined by turning the equipment off and on, the user is encouraged to try to correct the interference by one or more of the following measures:

- (1) Reorient or relocate the receiving antenna.
- (2) Increase the separation between the equipment and receiver.
- (3) Connect the equipment into an outlet on a circuit different from that to which the receiver is connected.
- (4) Consult the dealer or an experienced radio/TV technician for help.

Changes or modifications not expressly approved by the party responsible for compliance may result in this unit not complying with FCC Rules Part 15.

II) European Union Compliance Statement

This device complies with EN55022 Class B/EN55024.

U.S. Patent Nos. 4,603,320 4,686,506 and 4,972,470



