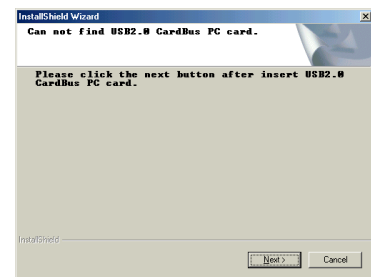


Quick Install Guide

Thank you for purchasing our product. This document explains how to install the CBU2. Follow the instructions to install it as follows:

[1] Insert the CD-ROM bundled in the package

Insert the CD. The installer will start up automatically. If the installer won't start up, run **[Setup.exe]** at the CD-ROM. The wizard(Fig1) will appear. You are prompted to insert the CBU2.



(Fig1)

[2] Insert the CBU2 PC Card into a PC Card slot

Insert the CBU2 PC Card.

If you are a Windows XP user, proceed to Section A.

If you are a Windows 2000 user, proceed to Section B.

If you are a Windows Me user, proceed to Section C.

If you are a Windows 98SE user, proceed to Section D.

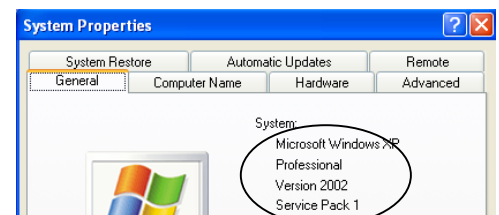
A: Windows XP users

You need to know whether Service Pack 1 is installed in your system or not.

To see if the Service Pack 1 is installed, right-click on **[My Computer]**, and then select **[Properties]**. If you can find a "Service Pack 1" string as shown in Fig2, Service Pack 1 is already installed in your system.

If the Service Pack 1 is installed, proceed to .

If the Service Pack 1 isn't installed, proceed to .



(Fig2)

If the Service Pack 1 is installed, wait a few minutes after inserting the CBU2. Then, click **[Next]** on the wizard shown in Fig 1.

The following wizard(Fig3) will open.

Select the **[Yes, I want to restart my computer now]** option and click **[Finish]**.

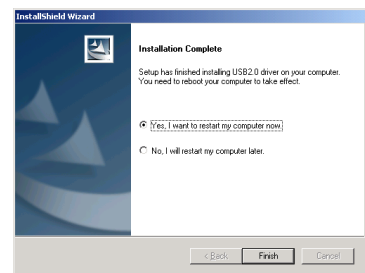
If the Service Pack 1 isn't installed, click **[Cancel]** on the wizard shown in Fig 1.

Insert the CBU2. The following wizard(Fig4) will open. Select the **[Install the software automatically(Recommended)]** option and click **[Next]**.

The following wizard(Fig5) will open. Click **[Continue Anyway]**.

The following wizard(Fig6) will open. Click **[Finish]**.

The following wizard(Fig6) will open. Click **[Yes]**.



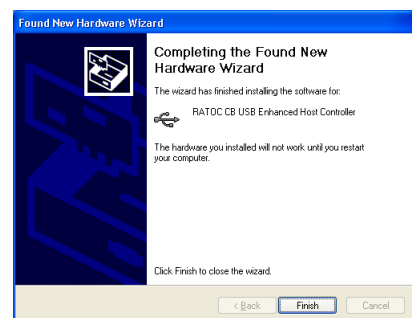
(Fig3)



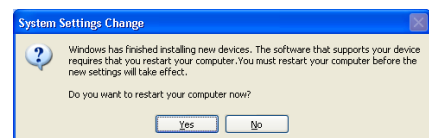
(Fig4)



(Fig5)



(Fig6)

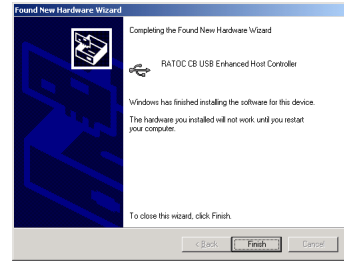


(Fig7)

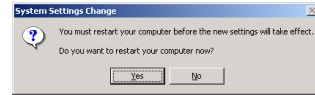
B: Windows 2000 users

If you are a Windows 2000 user, the Found New Hardware Wizard(Fig8) will open after inserting the CBU2. Click **[Finish]**. When you are prompted to restart your PC, click **[No]**(See Fig9).

Click **[Next]** on the wizard shown in Fig 1.



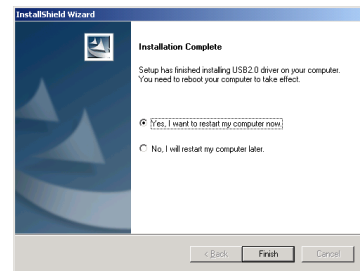
(Fig8)



(Fig9)

The following wizard(Fig10) will open.

Select the **[Yes, I want to restart my computer now]** option and click **[Finish]**.



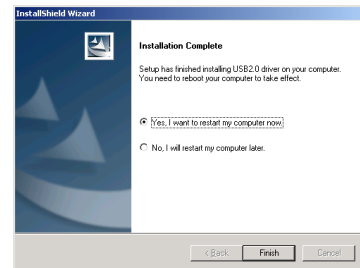
(Fig10)

C: Windows Me users

If you are a Windows Me user, wait a few minutes after inserting the CBU2. Then, click **[Next]** on the wizard shown in Fig 1.

The following wizard(Fig11) will open.

Select the **[Yes, I want to restart my computer now]** option and click **[Finish]**.



(Fig11)

D: Windows 98SE users

If you are a Windows 98SE user, the following wizard(Fig12) will open after inserting the CBU2. Click **[Next]**.



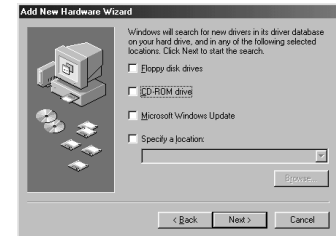
(Fig12)

The following wizard(Fig13) will open. Click the **[Search for the best driver for your device(Recommended)]** option and click **[Next]**.



(Fig13)

The following wizard(Fig14) will open. Uncheck all the options and click **[Next]**.



(Fig14)

The following wizard(Fig15) will open. Select the **[The updated driver(Recommended) NEC USB Open Host Controller]** option and click **[Next]**.



(Fig15)

Click **[Next]**.



(Fig16)

If you are prompted to insert the Windows 98 CD-ROM, click **[OK]** and insert Windows 98 CD-ROM.



(Fig17)

Then, specify a **[Win98]** folder at the CD-ROM and click **[OK]**.



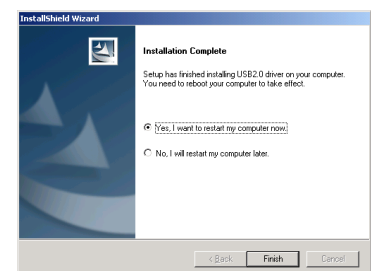
(Fig18)

Click **[Finish]**. The same wizard(Step to Step) will open again. Follow the same procedure, and then click **[Next]** on the wizard shown in Fig 1.



(Fig19)

Then, the following wizard(Fig20) will open. Select the **[Yes, I want to restart my computer now]** option and click **[Finish]**.



(Fig20)