

USB CF Host Card
CFU1U

User's Guide

Jan. 2003

Rev. 2.0

 **RATOC Systems, Inc.**

CFU1U

1.Introduction	1
1-1.Features	1
1-2.Package Confirmation	2
1-3.System Requirements and Restrictions	2
1-4.USB Device Support	3
1-5.Before installation	4
2.Installation	5
2-1.CFU1 Host Driver Set Up	6
2-2.CFU1 HID Driver Set Up	7
2-3.CFU1 Mass Storage Driver Set Up	8
3.Registration and Tech-Support	9
4.Specifications	10

1.Introduction

This User's Guide describes how to install, use the USB CF HOST Card CFU1U(called CFU1U in this User's Guide).

The information in the README file on the CD-ROM may include the latest information. Be sure to read the file as well.

1-1.Features

- Just plug in the CFU1U into a CF slot and USB1.1 Host Interface will be available in a snap.
- Runs on COMPAQ(HP) iPAQ series, Toshiba GENIO E series, Fujitsu POCKET LOOX series.
- USB HID Driver/USB Mass Storage Class Driver comes with the CFU1U. The drivers allow you to use USB keyboards, USB bar code readers, USB Flash disks.
- Power-saving design enables to run battery-driven PDAs for a long time.
- Runs with 3.3V/5V power supply.
- Can detach the CFU1 cable from the CFU1.

1-2.Package Confirmation

Check Package Contents:

- CFU1
- Cable
- CD-ROM
- Pull-out sticker
- User's manual
- Software License Agreement

NOTE

If any of these items are missing from the CFU1 retail package, contact your supplier immediately.

1-3.System Requirements and Restrictions

OS

- Pocket PC/Pocket PC 2002

PDA

- COMPAQ(HP) iPAQ series
- Toshiba GENIO, E series
- Fujitsu Pocket LOOX series

For more information, refer to our web site

(<http://www.ratocsystems.com/english/>)

NOTE

- 1. When you run some applications which put heavy load on CPU such as MP3 player, data transfer rate may get slow or the performance of the applications may get poor.**
- 2. If you use PC Card slot, you need to have a CF Type II Adapter.**

1-4. USB Device Support

- USB keyboard
- USB bar code reader
- USB Flash Disk
- USB MO, ZIP
- USB HUB
- Our USB products such as CF03U, etc.

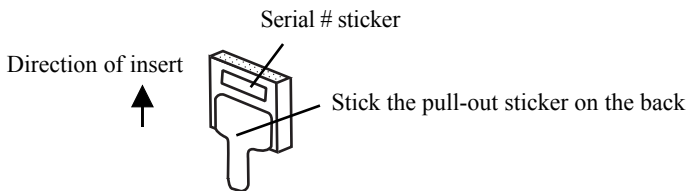
For more information, refer to our web site
(<http://www.ratocsystems.com/english/>)

NOTE

- 1. USB devices requiring over 100mA don't run with the CFU1U.**
- 2. Storage devices such as hard disk drives don't run with the CFU1U.**

1-5.Before installation

In order to pull CF Cards easily out of a CF Card Slot, a pull-out sticker comes with the CFU1 package. If an equivalent sticker doesn't come with your PDA, or your PDA doesn't have an eject button, stick this pull-out sticker as shown below in order to pull CF Cards easily.



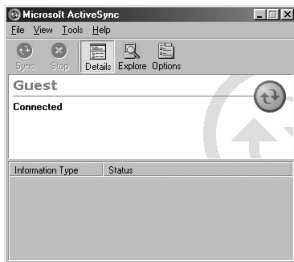
2. Installation

Before installation, you need to have connected your Windows PC to your PDA as ActiveSync.

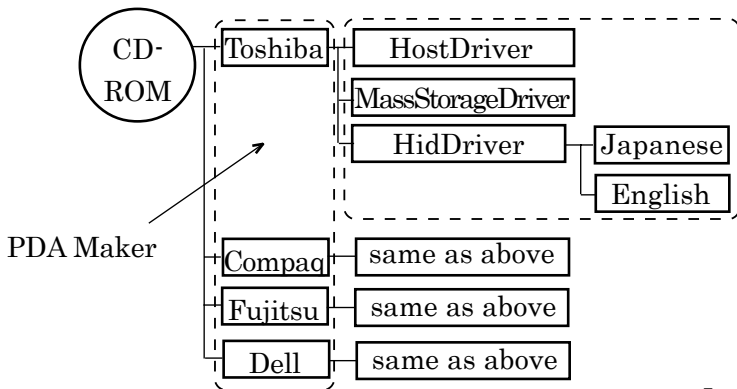
You need to connect your Windows PC in order to install the driver.

The following is the directory structure in the bundled CD-ROM.

Select the folder name of your PDA maker and then run [SETUP.EXE] in the folder.

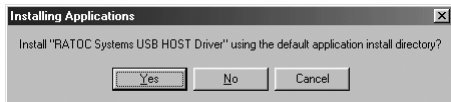


ActiveSync window

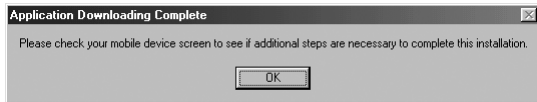


2-1.CFU1 Host Driver Set Up

You must install the CFU1 Host Driver first. Insert the bundled CD-ROM into a CD-ROM drive of your Windows PC and open an appropriate folder and run [SETUP] at the [HostDriver] folder. The following window will appear. Click [Yes] to install the driver.



When the installation has completed, the following window will appear. Click [OK].



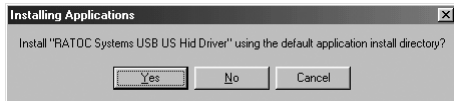
Message on Windows PC



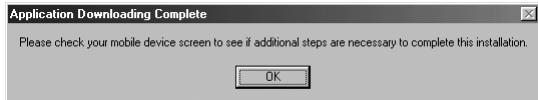
Message on PDA

2-2.CFU1 HID Driver Set Up

In order to connect a HID(Human Interface Device) such as an USB keyboard, USB bar code reader, you need to install the HID driver. Insert the bundled CD-ROM into a CD-ROM drive of your Windows PC and open an appropriate folder. Open a [English] folder and run [SETUP]. The following window will appear. Click [Yes] to install the driver.



When the installation has completed, the following window will appear. Click [OK]. You need to reset your PDA to take effect.



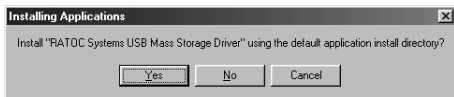
Message on Windows PC



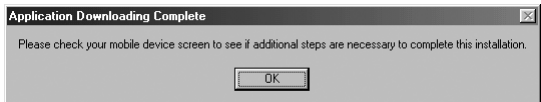
Message on PDA

2-3.CFU1 Mass Storage Driver Set Up

In order to connect storage devices such as an USB Flash Disk, USB MO, you need to install the Mass Storage driver. Insert the bundled CD-ROM into a CD-ROM drive of your Windows PC and open an appropriate folder. Open a [MassStorageDriver] folder and run [SETUP]. The following window will appear. Click [Yes] to install the driver.



When the installation has completed, the following window will appear. Click [OK]. You need to reset your PDA to take effect.



Message on Windows PC



Message on PDA

3.Registration and Tech-Support

3-1. How to Register

We highly recommend to register yourself as our customer through our on-line registration. (<http://www.ratocsystems.com/english/>)

3-2. Software Update and Support

-Utility Update-

The latest utility is subject to change for improvement or bug fix.You can download the latest version from our web site.

-Technical Support-

You can get a Tech support from RATOOC at the following:

(Open Monday - Friday,9:30A.M. to 5:00P.M.(PST))

RATOOC Systems International,Inc. Tech support

Address: 1933 O'Toole Avenue Suite A109

SanJose, CA 95131, U.S.A.

Phone : (408)955-9400 Fax : (408)955-9402

E-mail : int-support@rexpccard.co.jp

Web : <http://www.ratocsystems.com/english/>

Please include the following information:

- Our product name, serial number, and product description
- Host Computer Name, OS version,CD-ROM version

4. Specifications

CFU1U USB1.1 CF+ Host Card

Bus Interface :CF+ and CompactFlash Specifications Rev1.4

USB Interface:USB 1.1 Host Port(12Mbps/1.5Mbps)

Connector:USB1.1 series A(Female) x 1

Max Bus Power: 100mA

Power Consumption :3.3V/5V

34mA at 3.3V(without any device connected)

27mA at 5V(without any device connected)

Operating Requirements: Temperature 32 to 131°F(0 to 55°C)

Relative Humidity 10 to 80%(non-condensing)

Size:1.68 in (42.8 mm) (W) x 1.43 in (36.4 mm) (D) x 0.19 in (4.9 mm) (H)

Cable length:11.8 in (30 cm)

USB1.1 Host Driver

Host Interface :Original Class

Transfer Protocol :Control, Bulk, Interrupt transfer

USB1.1 Host Driver

Transfer Protocol :BOT(Bulk Only Transfer)

Appendix

Trademarks

-Windows is a registered trademark of Microsoft Corporation.

-Other brand and product names may be registered trademarks or trademarks of their respective holders.

Regulatory Agency Notice

FCC Compliance Statement

This equipment has been tested and found to comply with the limits for a Class B digital device, pursuant to Part 15 of the FCC Rules. These limits are designed to provide reasonable protection against harmful interference in a residential installation. This equipment generates, uses and can radiate radio frequency energy and, if not installed and used in accordance with the instructions, may cause harmful interference to radio communications. However, there is no guarantee that interference will not occur in a particular installation. If this equipment does cause harmful interference to radio or television reception, which can be determined by turning the equipment off and on, the user is encouraged to try to correct the interference by one or more of the following measures:

- (1) Reorient or relocate the receiving antenna.
- (2) Increase the separation between the equipment and receiver.
- (3) Connect the equipment into an outlet on a circuit different from that to which the receiver is connected.
- (4) Consult the dealer or an experienced radio/TV technician for help.

Changes or modifications not expressly approved by the party responsible for compliance may result in this unit not complying with FCC Rules Part 15.



