

Appendix: Be sure to read this Appendix at the BEGINNING

The User Guide of PCIFU1P(Rev.1.0 JAN 2000) has wrong information.

When you finish ***the step 1. Install the PCIFU1P PCI Board into a PCI slot*** at the page 3 of the User Guide(2-1:Quick Install Guide),follow the instructions below.

2.When you install the driver for the PCIFU1P,

1)Insert the CD-ROM in this package into the CD-ROM drive.

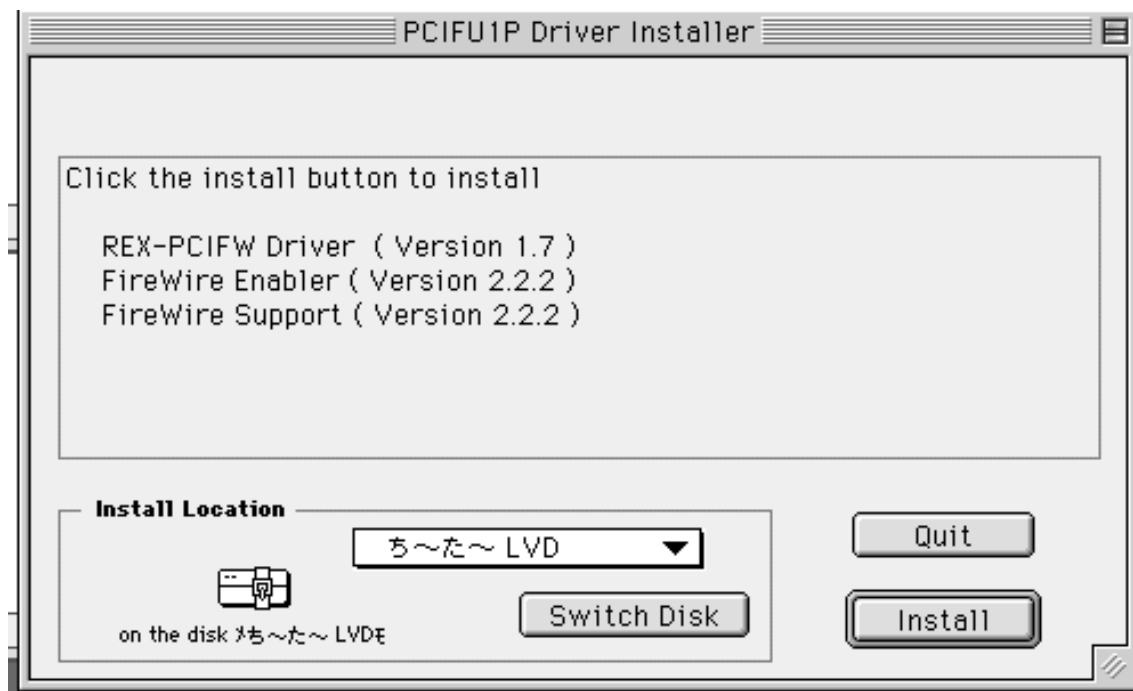
After you see the icon of the CD-ROM mounted on the desktop, open it.

2)Open ***PCIFU1*** folder.

3)Double-click the ***Installer*** icon.

4)You will see the screen below.

Click on the [***Install***] button.



5) If you succeed, you will see the screen below.

Click on the [**Quit**] button and restart your Macintosh.



6) If you succeed to install the driver for the PCIFU1P, you can find **the three files** below in the **Extentions** folder.

- **REX-PCIFW Driver**
- **FireWire Support 2.2.2**
- **FireWire Enabler 2.2.2**

NOTE: The revision number of the files above are subject to change without notice for software updates.

If you succeed to install the driver for the PCIFU1P, Follow the steps below.

3. Open **Extension Manager** window from **Control Panel**.

4. Check following Driver.

- **QuickTime FireWire DV Enalber**
- **QuickTime FireWire DV Support**

5. If you could not find **QuickTime FireWire DV Support** or **Enabler**, you have to install QuickTime 4.0 (Refer to page12).

As for the rest of the steps, follow the step7, 8, 9, 10 at the page 5 of the User Guide (2-1:Quick Install Guide). You do not need to read the page 10,11 of the User Guide.