

**IEEE 1394/USB Combo PCI Board
for Windows98SE/2000/Me**

PCIFU1U

User's Guide

Rev. 1.0

November 2000

 RATOC Systems, Inc.

PCIFU1U User's Guide

1. Introduction	1
1-1. Package Confirmation	1
1-2. System Requirements	1
2. Hardware Setup	2
2-1. PCIFU1U Board	2
2-2. Installing the PCIFU1U into a PCI slot	3
3. Installing Driver	4
3-1. Windows 98 SE Installation	4
3-2. Windows 2000 Installation	13
3-3. Windows Me Installation	15
4. Setup RsDvCap	18
4-1. Installing RsDvCap/RsDvStill/CompressAVI	18
4-2. Installing MSDV update for Windows98 SE only	20
5. How to use RsDvCap	21
5-1. Main menu	22
5-2. Control Bars	23
5-2-1. Camera and Audio Select Bar	23
5-2-2. Camera Control Bar	23
5-2-3. Video Control Bar	24
5-3. Application settings	25
5-4. Capturing a video from a DVCAM in camera mode	29
5-5. Capturing a video from a DV tape	30
5-6. DV Batch Capture	31
5-7. Exporting a video to a DVCAM	33

6. How to use RsDvStill	34
6-1. Main menu	34
6-2. How to save a BMP file	37
7. How to use CompressAVI	39
7-1. How to convert the MS DV-AVI2 format into other formats?	40
7-2. How to convert other formats to the MS DV-AVI2 format?	44
8.Ulead Video Studio	47
9.Registration and Tech-Support.....	48
9-1. How to Register	48
9-2. Software Update and Support	48
10.Specifications	49

1. Introduction

This User Guide describes how to install, use, and troubleshoot the RATO C 1394 USB Combo PCI Board (called PCIFU1U in this User's Guide).

The information in the README.TXT file on the CD-ROM may include the latest information. Be sure to read the README.TXT file as well.

1-1. Package Confirmation

Confirm the package contents:

- PCIFU1 1394 USB Combo PCI Board
- DV 4p-1394 6p cable
- HDD power connector extend cable
- PCIFU1U capture software(CD-ROM)
- Ulead Video Studio 4.0 SE Basic(CD-ROM)
- User's Guide (This document)
- Software License Agreement

NOTE

If any of these items are missing from the PCIFU1U retail package, contact your supplier immediately.

1-2. System Requirements

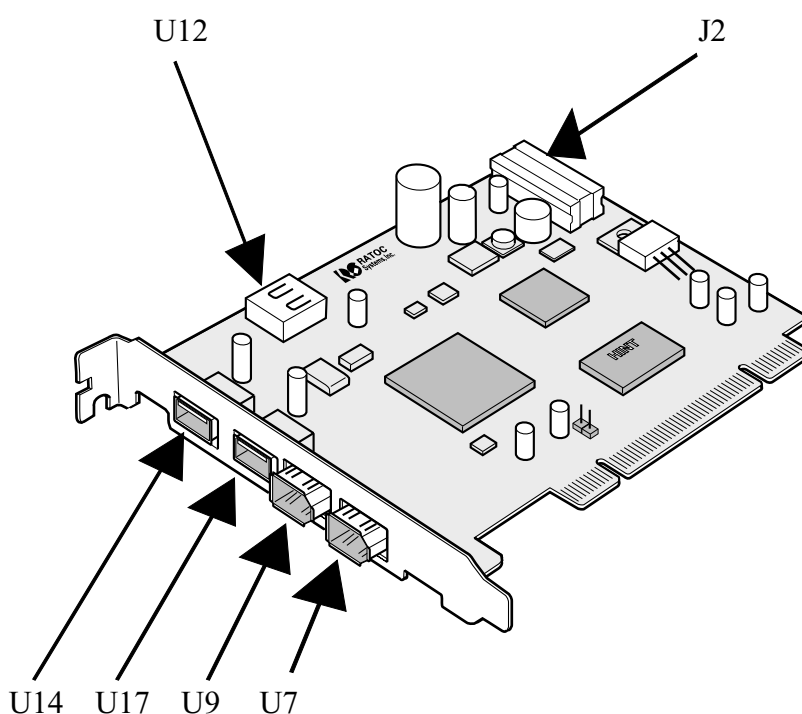
Your PC must meet the following requirements:

- One free PCI slot
- Windows98 SE(Second Edition)/Windows2000/Windows Me(Millennium Edition)
- Pentium II 300MHz or faster for video editing
- At least 64 MB memory for video editing
- High performance AGP Graphic Board for video editing
- High performance Sound Board for video editing
- High performance DMA enabled Hard Disk Drive for video editing
- Sufficient Hard Disk space for video capture (1 second DV video = 3.6MB) for video editing

2. Hardware Setup

2-1.PCIFU1U Board

Before installing the PCIFU1U into a PCI slot, understand the usage of the connectors on the PCIFU1U.

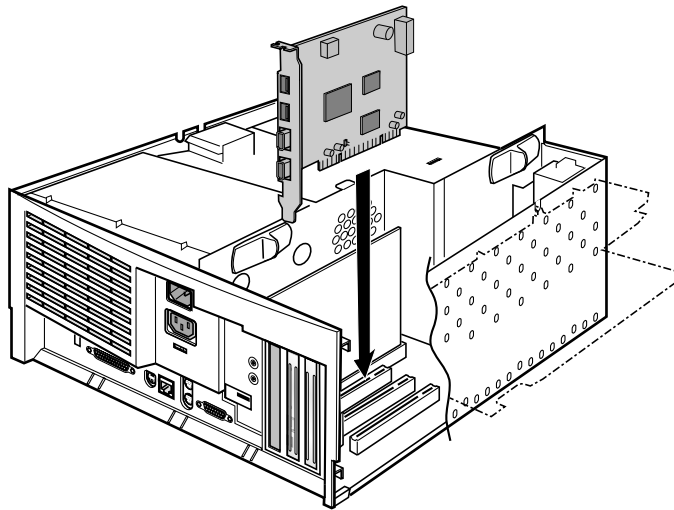


U7,U9	1394 6pin external connector
U17,U14	USB type A connector
U12	1394 6pin internal connector
J2	1394 Cable Power connector You have to connect this J2 to a HDD power connector of your PC to use cable-powered device such as 1394 portable HDD,CCD camera,etc.

2-2.Installing the PCIFU1U into a PCI slot

Follow the steps through to install the PCIFU1U into a PCI slot.

- 1.Turn off your PC and remove the computer cover.



- 2.Carefully install the PCIFU1U by firmly pressing the PCI board into a PCI expansion slot.
- 3.Fasten the retaining bracket with the screw.
- 4.Extend a HDD power connector of your PC with the HDD power connector extend cable in this package and connect it to the J2 connector on the PCIFU1U.
You have to connect this cable to use cable-powered type 1394 devices such as portable HDDs, CCD cameras those require cable power source.
- 5.Attach the computer cover.

3. Installing Driver

This section describes the driver installation. First, confirm your Windows version.

When your Windows version is Windows 98 SE(Second Edition), go to Chapter 3-1.

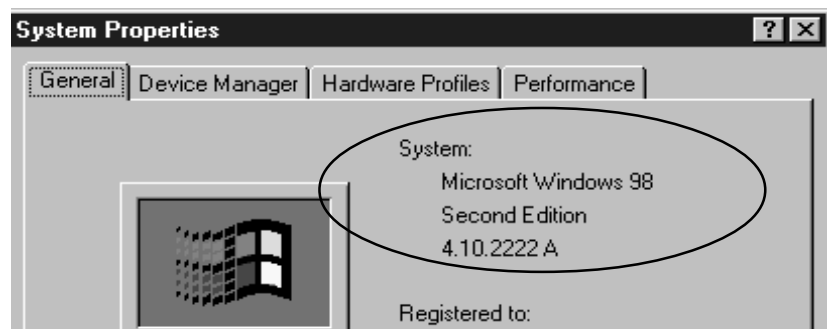
When your Windows version is Windows 2000, go to Chapter 3-2.

When your Windows version is Windows Me(Millennium Edition), go to Chapter 3-3.

3-1.Windows 98 SE Installation

To use the PCIFU1U on Windows 98 Second Edition, follow the steps through.

Make sure your Windows is Windows98 Second Edition by checking the **“Properties”** of **“My Computer”**. If you can find **“Second Edition”**, you have Windows98 Second Edition.



Step 1. Installing Driver

1. Start the PC. Hardware Wizard will detect the PCIFU1U automatically and you will see the screen below. Click **[Next]**.



2. You will see the screen below. Select **[Search for the best driver for your device (Recommended)]** and click **[Next]**.



3. You will see the screen below. You don't need to check any boxes. Click **[Next]**.



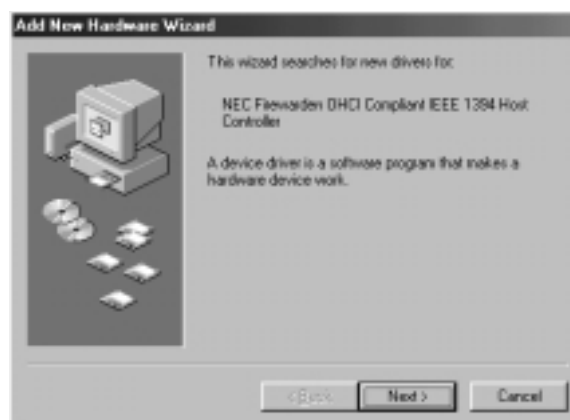
4. You will see the screen below. Click **[Next]**.



5. You will see the screen below. Click **[Finish]**.



6. Next, you will see the screen below. Click **[Next]**.



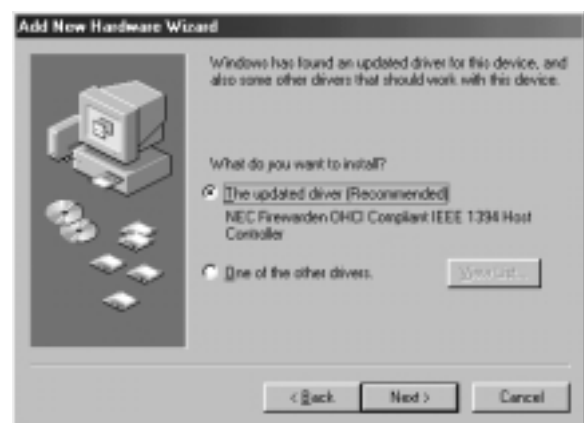
7. You will see the screen below. Select **[Search for the best driver for your device (Recommended)]** and click **[Next]**.



8. You will see the screen below. You don't need to check any boxes. Click **[Next]**.



9. You will see the screen below. Select **[The updated driver (Recommended)]** **NEC Firewarden OHCI Compliant IEEE 1394 Host Controller**. Then click **[Next]**.



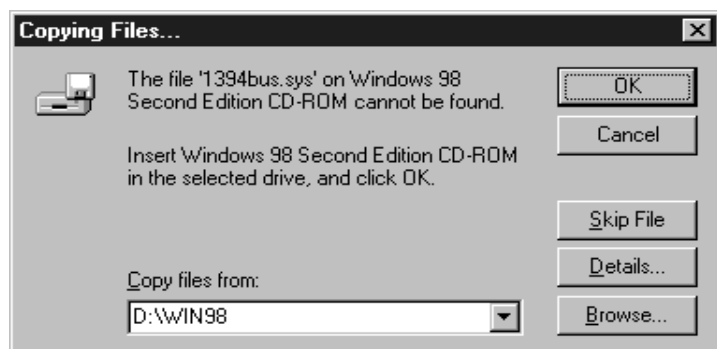
10. You will see the screen below. Click **[Next]**.



11. When the following window appears, insert the Windows 98 SE CD-ROM into the CD-ROM drive. Then click **[OK]**.



12. If the following window appears, type **“D:\Win98”** or **“C:\Windows\options\cabs”** in the **Copy files from** box, where **“D”** means the CD-ROM drive. After that, click **[OK]**.
If your CD-ROM drive is not **“D”**, you must replace **“D”** to the appropriate drive name.



13. You will see the screen below. Click **[Finish]**.

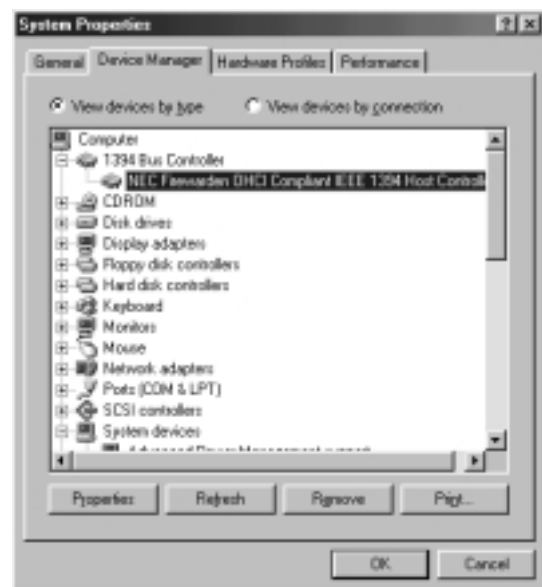
You have now completed the installation of the driver.



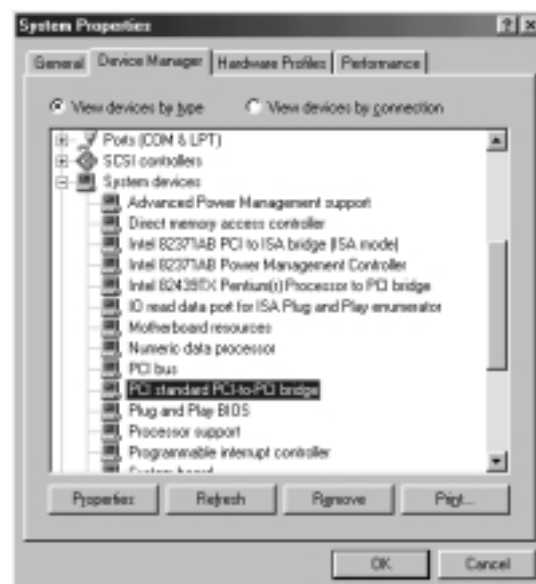
Step 2. Confirming the Installation of the Driver

To confirm the driver installation, follow the steps through.

1. Click **My Computer** with the right button of the mouse.
2. Select **Properties**.
3. Click the **Device Manager** tab.
- 4.a) Confirm there is a **NEC Firewarden OHCI Compliant IEEE 1394 Host Controller** string without any yellow “!” marks or red “X” marks under the **1394 Bus Controller**.



- b) Confirm there is a **PCI standard PCI-to-PCI bridge** string without any yellow “!” marks or red “X” marks under the **System devices**.



- c) Confirm there is a **NEC USB Open Host Controller** or **OPTi 82C861 PCI to USB Open Host Controller** string without any yellow “!” marks or red “X” marks under the **Universal Serial Bus controllers**.



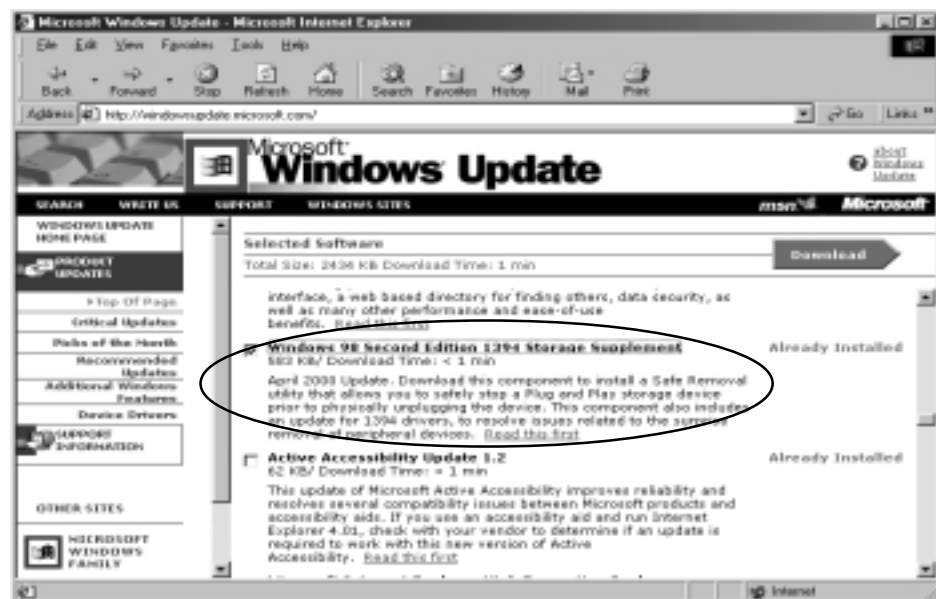
Step 3. Microsoft Windows Update

You should update your Windows 98 SE to improve performance. To update your Windows 98 SE, follow the steps through.

1. Click **Start** with the left button of the mouse.
2. Select **Windows Update**.
3. You will see the screen below. Click **PRODUCT UPDATES**.



4. You will see the screen below. Check **Windows 98 Second Edition 1394 Storage Supplement** and download the component. For more information on the component, refer to **Read this first** on the screen.



3-2.Windows 2000 Installation

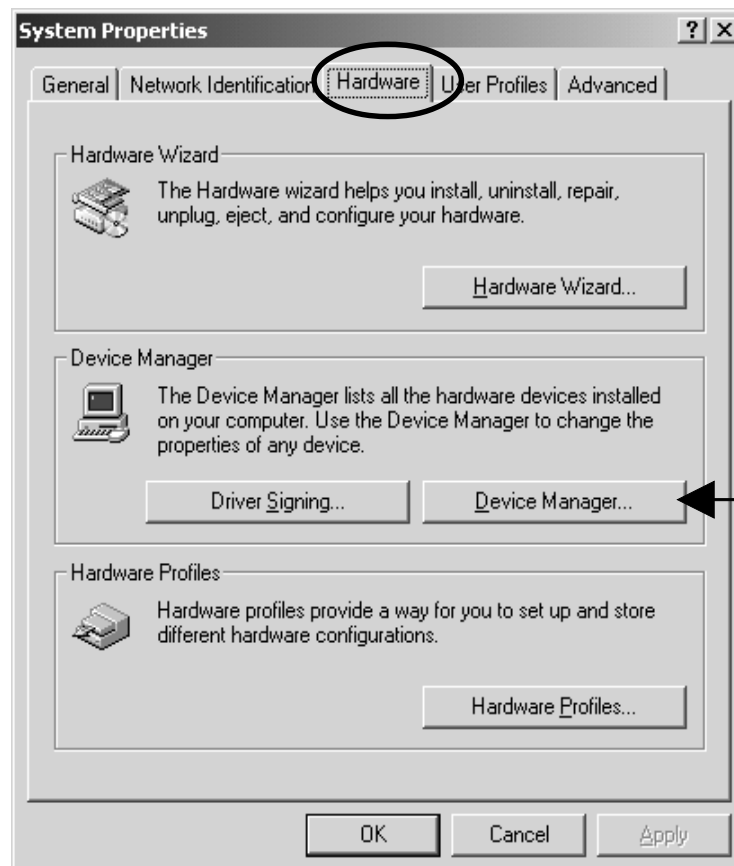
To use the PCIFU1U on Windows 2000, follow the steps through.

Confirming the Installation of the Driver

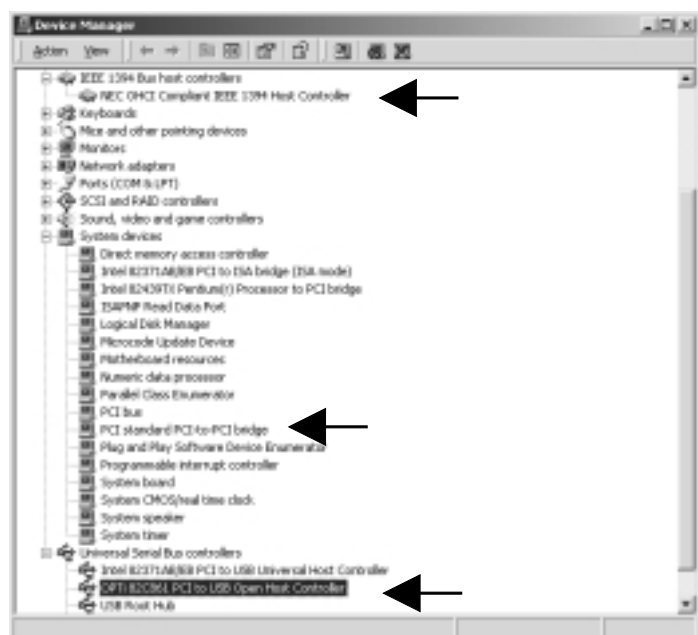
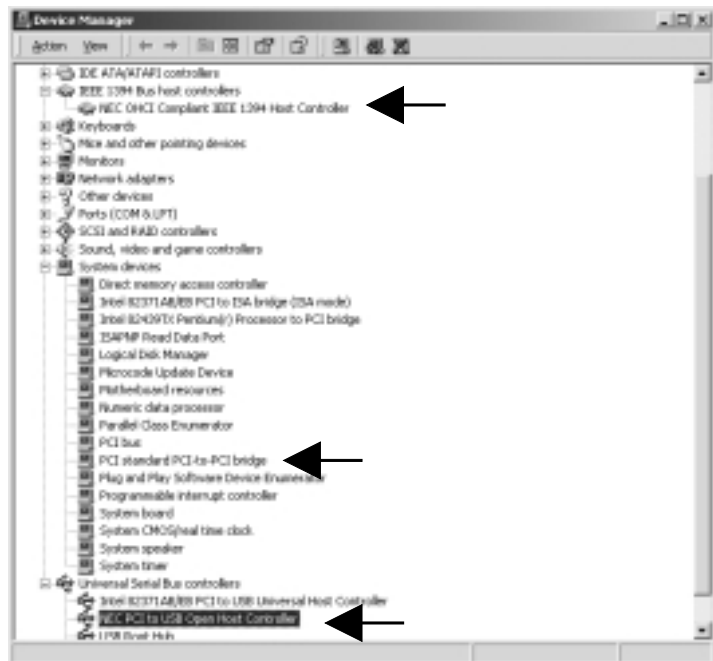
When you start the PC, the driver is installed automatically by the Hardware Wizard.

To confirm the driver Installation, follow the steps through.

- 1.Click **My Computer** with the right button of the mouse.
- 2.Select **Properties**.
- 3.You will see the screen below. Click the **Hardware** tab.
- 4.Click the “**Device Manager**” button.



- 5.a) Confirm there is a **NEC OHCI Compliant IEEE 1394 Host Controller** string without any yellow “!” marks or red “X” marks under the **IEEE 1394 Bus host controllers**.
- b) Confirm there is a **PCI standard PCI-to-PCI bridge** string without any yellow “!” marks or red “X” marks under the **System devices**.
- c) Confirm there is a **NEC PCI to USB Open Host Controller** or **OPTi 82C861 PCI to USB Open Host Controller** string without any yellow “!” marks or red “X” marks under the **Universal Serial Bus controllers**.



3-3.Windows Me Installation

To use the PCIFU1U on Windows Me, follow the steps through.

Step 1. Installing Driver

1.Start the PC. Hardware Wizard will detect the PCIFU1U automatically and you will see the screen below. Select [**Automatic search for a better driver(Recommended)**] and click [**Next**].



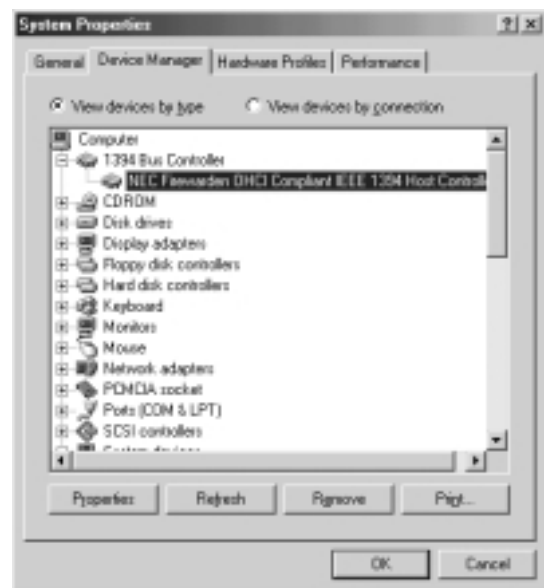
2.You will see the screen below. Click [**Finish**].



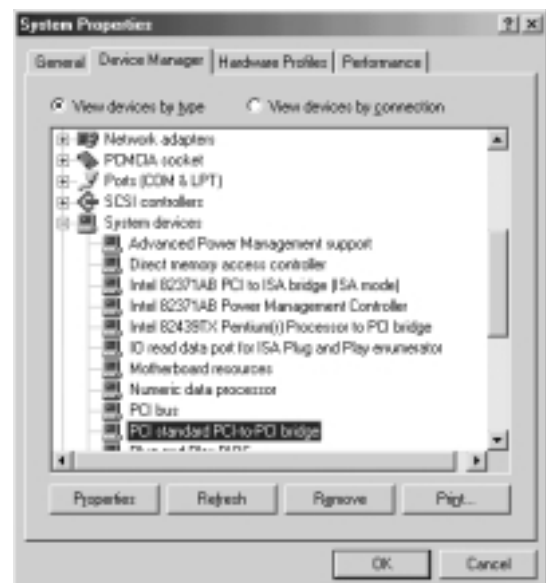
Step 2. Confirming the Installation of the Driver

To confirm the driver Installation, follow the steps through.

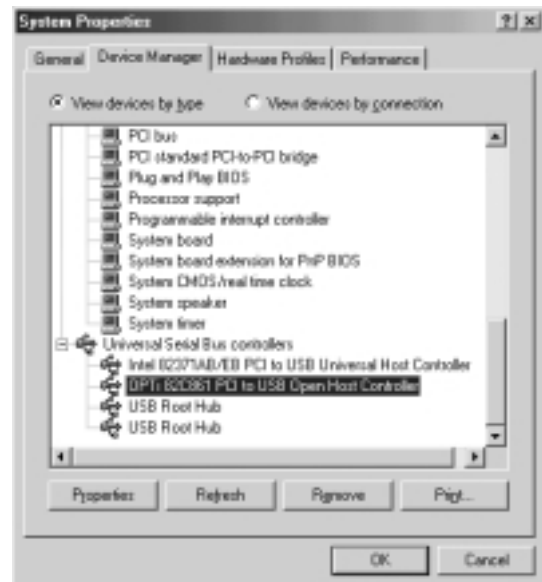
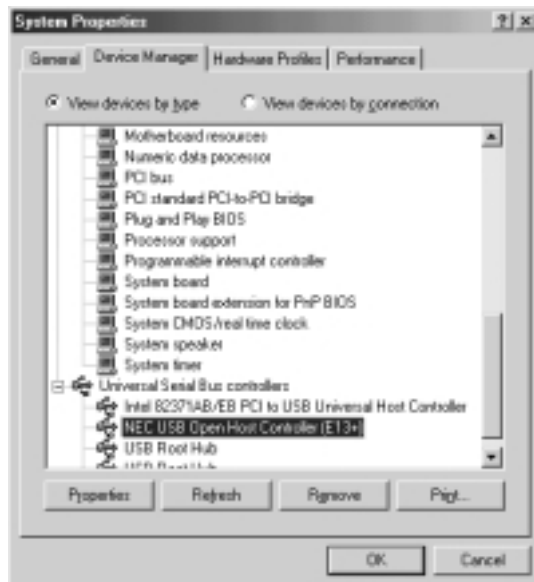
1. Click **My Computer** with the right button of the mouse.
2. Select **Properties**.
3. You will see the screen below. Click the **Device Manager** tab.
- 4.a) Confirm there is a **NEC Firewarden OHCI Compliant IEEE 1394 Host Controller** string without any yellow “!” marks or red “X” marks under the **1394 Bus Controller**.



- b) Confirm there is a **PCI standard PCI-to-PCI bridge** string without any yellow “!” marks or red “X” marks under the **System devices**.



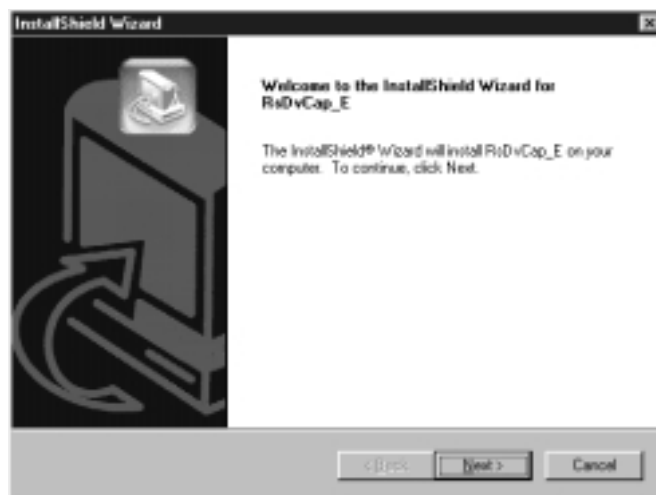
c) Confirm there is a **NEC USB Open Host Controller** or **OPTi 82C861 PCI to USB Open Host Controller** string without any yellow “!” marks or red “X” marks under the **Universal Serial Bus controllers**.



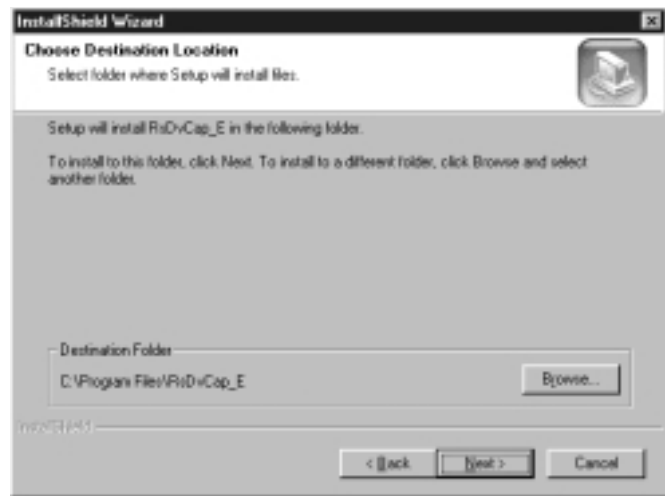
4. Setup RsDvCap

4-1.Installing RsDvCap/RsDvStill/CompressAVI

- 1.Close all programs currently running on your computer.
- 2.Set the **RATOC 1394 USB Combo PCI Board CD-ROM** in your CD-ROM drive.
- 3.Open **[My Computer]** and double-click CD-ROM drive icon.
- 4.Open **[Win98SE]**, **[Win2000]** or **[WinMe]** folder.
If your Windows version is Windows98 SE(Second Edition), open **[Win98SE]** folder.
If your Windows version is Windows2000, open **[Win2000]** folder.
If your Windows version is Windows ME(Millennium Edition), open **[WinMe]** folder.
- 5.Double-click the **[RsDvCap]** folder.
- 6.Double-click on **[Setup.exe]** to install the RsDvCap software.
- 7.You will see the screen below.Click **[Next]**.



8. You will see the screen below. Click **[Next]**.



9. You will see the screen below. Click **[Next]**.



10. You will see the screen below.

Select [**Yes, I want to restart my computer now**] and click [**Finish**].

You have now completed installing the capture software.



4-2. Installing MSDV update for Windows98 SE only

Install MSDV update program(**252640USA8.EXE**) only when you use **Windows98 SE(Second Edition)**. If you use Windows2000 or Windows ME(Millennium Edition), skip this installation of MSDV update program.

Follow steps through to install MSDV update program.

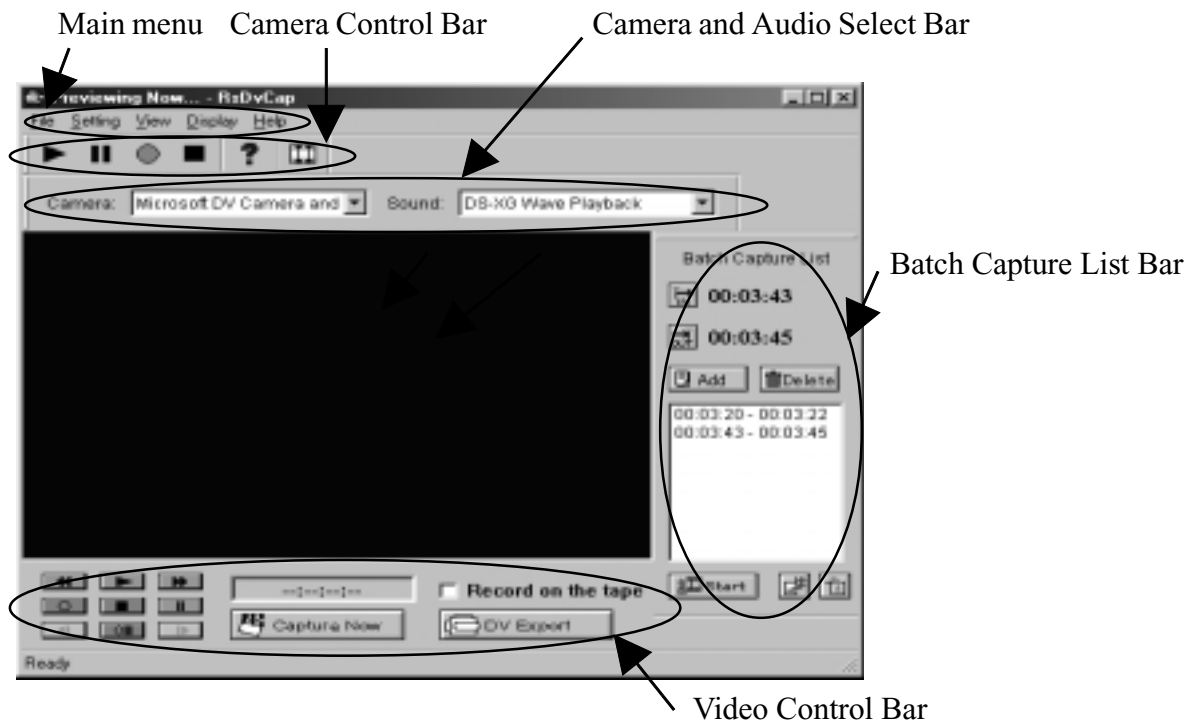
1. Set the **RATOC 1394 USB Combo PCI Board CD-ROM** into your CD-ROM drive.
2. Open [**My Computer**] and double-click CD-ROM drive icon.
3. Double-click [**Win98se**] folder and double-click the [**DvPatch**] folder.
4. Double-click on [**252640USA8.EXE**].

5. How to use RsDvCap

What is the RsDvCap?

This application software has the following functions.

- Preview and capture video/sound data from a DVCAM.
- Preview and capture video data from a CCD camera.
- Export media file from a PC to a DVCAM.
- Playback media file.



RsDvCap Main Screen

NOTE

1. This software uses Microsoft standard DV-AVI2 format video file.
2. To capture correct DV file, you have to use original DV footages which has continuous Timecode(recording). If the original DV footage has intermittent Timecode, sometimes it may cause system freeze or may not be captured.

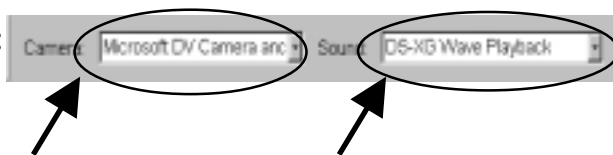
5-1.Main menu:



Top menu	Sub menu	Description
File	Review movie file	Select an AVI file you want to play back.
	END	Terminate this application.
Setting	DV Batch Capture	Show batch capture dialog box.Refer to 5-6.DV Batch Capture .
	Application Setting	Show RsDvCap parameter setting dialog box. Refer to 5-3.Application settings .
	Cam Setting	Show CCD camera control dialog box.
View	Camera Audio Select Bar	Show Camera and Audio Select Bar . Refer to 5-2-1.Camera and Audio Select Bar .
	Camera Control Bar	Show the DVCAM camera mode control bar. You can control a DVCAM.Refer to 5-2-2. Camera Control Bar .
	Video Control Bar	Show the DVCAM video mode control bar. You can control a DVCAM.Refer to 5-2-3. Video Control Bar .
	Batch Capture List	Show the Batch Capture List Bar.You can capture favorite scenes in a DV tape to your HDD.Refer to 5-6.DV Batch Capture .
Display		Select the size of the preview window. The preview window of the [PC] is 4:3. The preview window of the [DV] is 3:2.

5-2.Control Bars

5-2-1.Camera and Audio Select Bar:



Camera list box

Sound device list box

This bar has the **Camera list box** and **Sound device list box** as shown above. **Camera list box** displays a list of camera device connected to your PC. If this list box is blank, your camera isn't recognized.

“**Microsoft DV Camera and VCR**” string will appear. **Sound device list box** displays a list of sound device.

5-2-2.Camera Control Bar :



You can preview and capture a video image from the connected DVCAM. The bar will appear automatically when the DVCAM is set to camera mode. The DVCAM have a switch which selects video mode or camera mode. Set this switch to camera mode to preview and capture a video image.



....When you click this button, you can preview a video image.



....When you click this button, you can pause a video image.



....When you click this button, you can capture a video image to the HDD.



....When you click this button, you can stop previewing or capturing a video image.



....When you click this button, you will see the Help contents.










.....When you click this button, you can play back an AVI file.

5-2-3.Video Control Bar :



You can control a DVCAM from this control bar. The DVCAM have a switch which select video mode or camera mode. If you set this switch to camera mode or a DV tape is not inserted, this control bar will be disabled automatically. Set this switch to video mode to control the DVCAM.

The functions are below:

-  ...Rewind
-  ...Previous frame
-  ...Play
-  ...Next frame
-  ...Pause
-  ...Stop
-  ...Fast forward
-  ...Record
-  ...Pause recording



When you click the **Capture Now** button, you can start to capture DV data from a DVCAM. The **[Capture Now]** will change to **[Capture Stop]**.

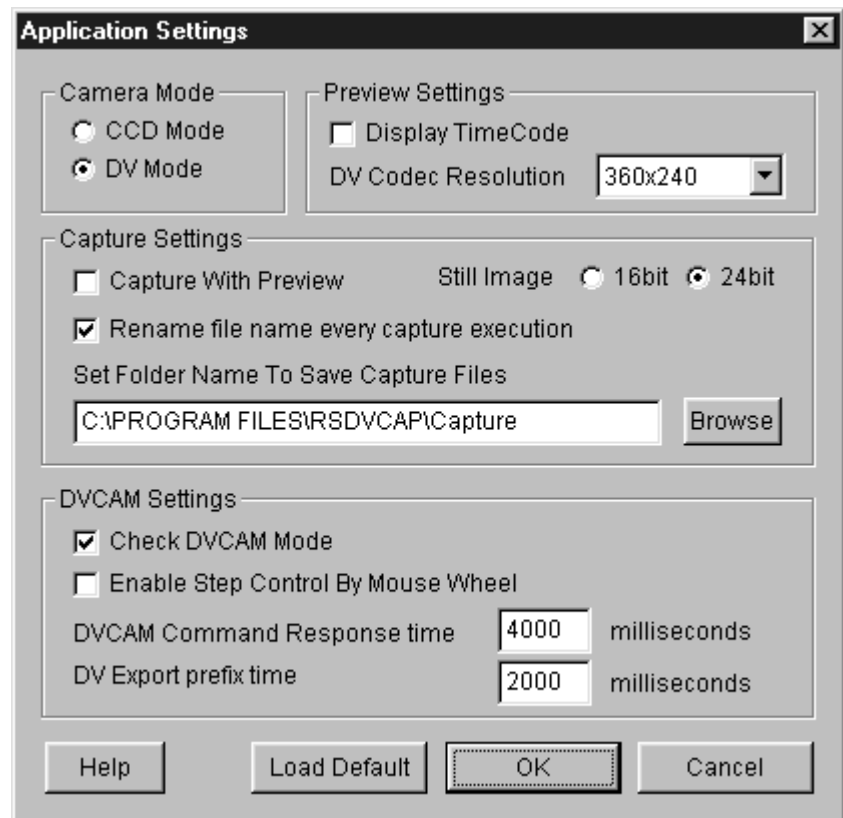


When you click the **DV Export** button, you can export DV data to a DVCAM. You can see the DV data on the screen of the DVCAM.

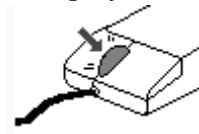

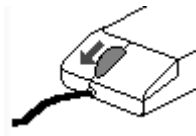

- 1.If you don't want to record DV data onto your DV tape, don't check "**Record on the tape**".
- 2.If you really want to record DV data onto your DV tape, check "**Record on the tape**".

5-3.Application settings

When you select [**Application setting**] of the [**Setting**] menu, you will see the dialog box below.
You can set up this application's behavior.



Category	Item	Description
Camera Mode	CCD Mode	Select when you use a CCD camera.
	DV Mode	Select when you use a DVCAM.
Preview Settings	Display TimeCode	If checked, timecode will be displayed.
	DV Codec Resolution	You can select DV Codec Resolution. If you select a higher resolution, you will get a better image. This DV Codec Resolution affects only the preview quality.
Capture Settings	Capture With Preview	If checked, video images will be displayed in the preview window during capturing video stream. When you check here, it will be a heavy load on your PC. If you have problems of dropping frames or sounds, don't check this option.
	Rename file name every capture execution	If checked, every time you start and stop capturing a video, the file rename dialogbox will appear. You can set a file name and location to save the file in. If you don't check here, a captured file will be saved automatically under the name of CAPTIME+(Time)+Year+(Date).AVI in the folder you set at "Set Folder Name To Save Capture Files" .

Category	Item	Description
DVCAM Settings	Check DVCAM Mode	<p>If you click here, this application will detect whether your DVCAM is in camera mode or video mode automatically. If your DVCAM is in video mode, the Camera Control Bar will disappear. If your DVCAM is in camera mode, the Camera Control Bar will appear and the Video Control Bar will be disabled.</p>
	Enable Step Control By Mouse Wheel	<p>If you check here, you can control a camera with your mouse as shown below.</p> <p>1) When you click wheel, a DVCAM starts to play.</p>  <p>2) When you turn wheel down, a DVCAM starts to rewind.</p>  <p>3) When you turn wheel up, a DVCAM starts to fast forward.</p>  <p>4) When you click the right button, a DVCAM stops.</p> 

Category	Item	Description
	DVCAM Command Response time	When you control a DVCAM from the PC consecutively, it takes some time for the DVCAM to get ready for a next command from the PC. This time depends on the DVCAM. If you have trouble in controlling the DVCAM from the PC consecutively, change this value to a longer time than 4 seconds. Default time is 4 seconds. For example, 5 seconds.
	DV Export prefix time	When you export an AVI file to a DVCAM, there is data prefix time from starting to export the AVI file to recording it onto a DV tape. The data prefix time results in failing to record the beginning of the AVI file onto the DV tape. To avoid this problem, you can set a time here. During the time you set here, blank data will be exported to the DVCAM and it avoids failing to record the beginning of the AVI file onto the DV tape.

5-4.Capturing a video from a DVCAM in camera mode

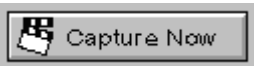
When you want to capture a video image from a DVCAM set to camera mode, follow steps through.

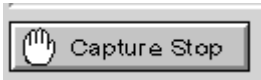
1. Confirm a DVCAM is set to camera mode.

Camera mode means you can capture a video image. If your DVCAM is in video mode, change mode selection switch from video mode to camera mode slowly. Everytime you change DVCAM's Mode Control switch, move this switch to OFF position and confirm that the RsDvCap's Camera device name will disappear. After that, you can change this switch to your choice and the camera device name will appear.

2. Select **[DV mode]** on the **[Application Setting]** as shown in **5-3.Application settings**.

3. Click the  button on the **Camera Control bar**. A video image from a DVCAM will appear.

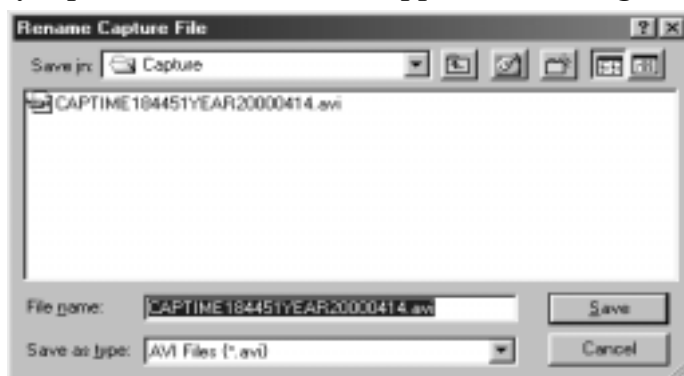
4. Click the  button to start capturing.

5. Click the  button to stop capturing.

You can also stop capturing by using the  button on the **Camera Control Bar** or pressing **ESC** button on the keyboard.

6. If you checked **[Rename file name every capture execution]** on the **[Application Setting]**, You will see the window. You can rename the captured file.

7. The file will be saved in the folder you set at **[Set Folder Name To Save Capture Files]** on the **[Application Setting]**.



NOTE

When you preview, it puts some load on PCs. If data loss happens, don't check **[Capture With Preview]** on the **[Application Setting]**.


5-5.Capturing a video from a DV tape


When you want to capture a video image from a DV tape, follow steps through.


1. Set a DV tape in a DVCAM and confirm the DVCAM mode is set to video mode.

Video Mode means you can control a video of a DV tape. If your DVCAM is in camera mode, change mode selection switch from camera mode to video mode slowly as mentioned **5-4.Capturing a video from a DVCAM in camera mode**.

- 2.Select **[DV mode]** on the **[Application Setting]** as shown in **5-3.Application settings**.

- 3.When you click the  DV play button on the **Video Control Bar**, the DV tape will start to play and a video image of the DV tape will appear in the preview window.

- 4.Click the  **Capture Now** button to start capturing.

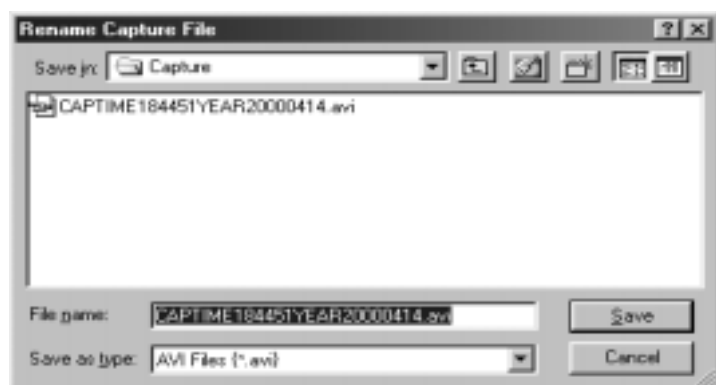
- 5.Click the  **Capture Stop** button to stop capturing.

You can also stop capturing by using the  stop button on the **Video Control Bar** or pressing **ESC** button on the keyboard.

6. If you checked **[Rename file name every capture execution]** on the **[Application Setting]**,

You will see the window.You can rename the captured file.

- 7.The file will be saved in the folder you set at **[Set Folder Name To Save Capture Files]** on the **[Application Setting]**.



NOTE


- 1.When you preview, it puts some load on PCs. If data loss happens, don't check **[Capture With Preview]** on the **[Application Setting]**.
- 2.To capture correct DV file, you have to use original DV footages which has continuous Timecode(recording). If the original DV footage has intermittent Time code, sometimes it may cause system freeze or may not be captured.


5-6.DV Batch Capture


Batch capture function saves video images files as your time scheduling. To batch capture video images from a DV tape, follow steps through.


1. To show the Batch Capture Window as shown right, select **[Batch Capture List]** of the **[View]** in the system menu.

2. Set a DV tape in a DVCAM and confirm the DVCAM mode is set to video mode. Video Mode means you can control a video of a DV tape. If your DVCAM is in camera mode, change mode selection switch from camera mode to video mode slowly as mentioned **5-4.Capturing a video from a DVCAM in camera mode.**


3. Click the  DV play button on the **Video Control Bar** to play the DV tape.

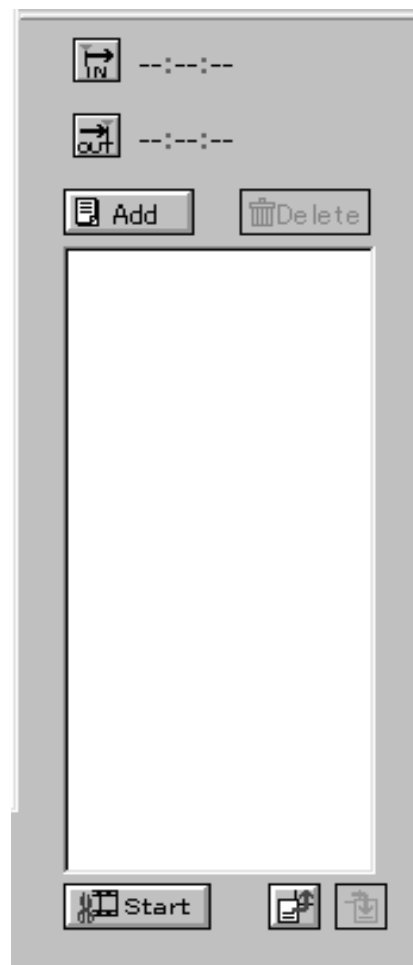
4. Click the  In point button when you want to start capturing.

5. Click the  Out point button when you want to stop capturing.

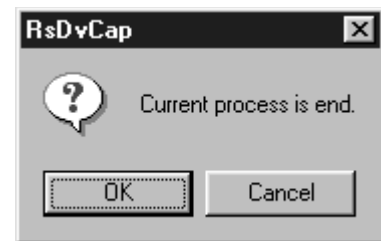
6. Click the  Add button to add time code to the window as shown above.

To capture other Video images of the DV tape, repeat the steps from 4 to 6.

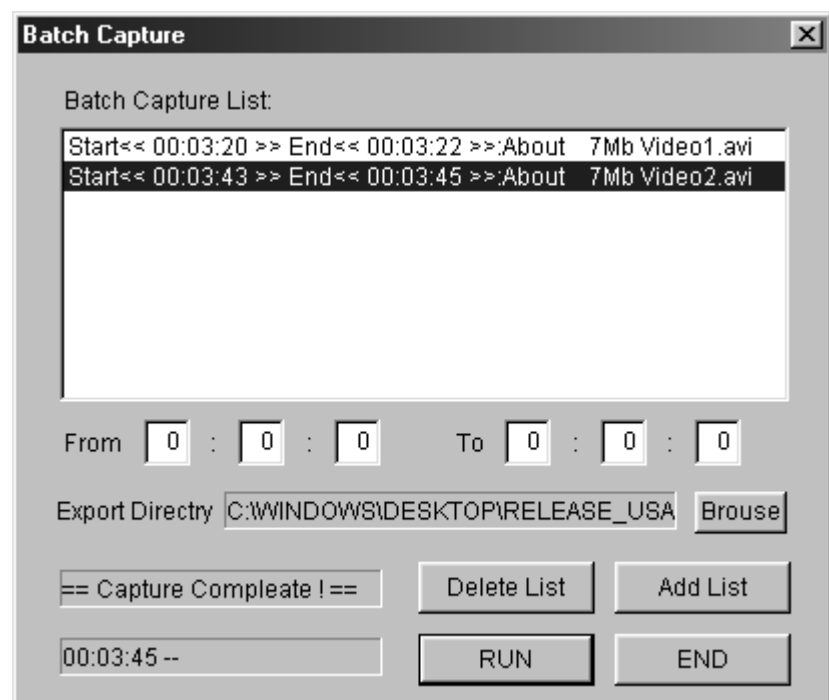
7. Click the  start button to show the Batch Capture dialog box as shown in the next page.



8. You will see the screen. Click **[OK]** to continue.



9. The Batch Capture dialog box will be shown. Click **[RUN]** to start batch capture. This application searches automatically the timecode you have just set and starts to capture video images and saves the file in the folder written in the “**Export Directory**” under the name of **Video + (number)** starting 1 + **.avi** as shown below. When batch capture is finished, “**Capture Complete!**” message will appear. Click **[END]** to finish batch capture.



NOTE

To capture correct DV file, you have to use original DV footages which has continuous Timecode(recording). If the original DV footage has intermittent Timecode, sometimes it may cause system freeze or may not be captured.

5-7.Exporting a video data to a DVCAM

When you want to export an video data to a DVCAM, follow steps through.

1. Set a DVCAM to video mode.

Video Mode means you can control a video of a DV tape.

If your DVCAM is in camera mode, change mode selection switch from camera mode to video mode slowly as mentioned **5-4.Capturing a video from a DVCAM in camera mode.**



2. Click the DV Export button. The File select dialog box will appear. Select an AVI file you want to export, and click [SAVE] button. The AVI data will be exported to the DVCAM.

When you check **“Record on the tape”**, “Video image” and “Rec command” will be sent to the DVCAM. This means the AVI file will be really overwritten to your DV tape. So, you should be careful not to overwrite important DV tapes.

When you don't check **“Record on the tape”**, only “Video image” will be sent to the DVCAM. This means the AVI file will not be overwritten to your DV tape. You can see the video image on the screen of the DVCAM.

NOTE

There is time-delay between start of video stream and the DVCAM actually starting to record. So for a few seconds at the head of video stream, nothing will be recorded on your DV tape.

- 3.Click the  stop button in the **Camera Control Bar** to stop exporting.

NOTE

Only a Microsoft DV AVI 2.0 with DVSD(Digital Simultaneous Voice and Data) can be exported to a DVCAM.

6. How to use RsDvStill

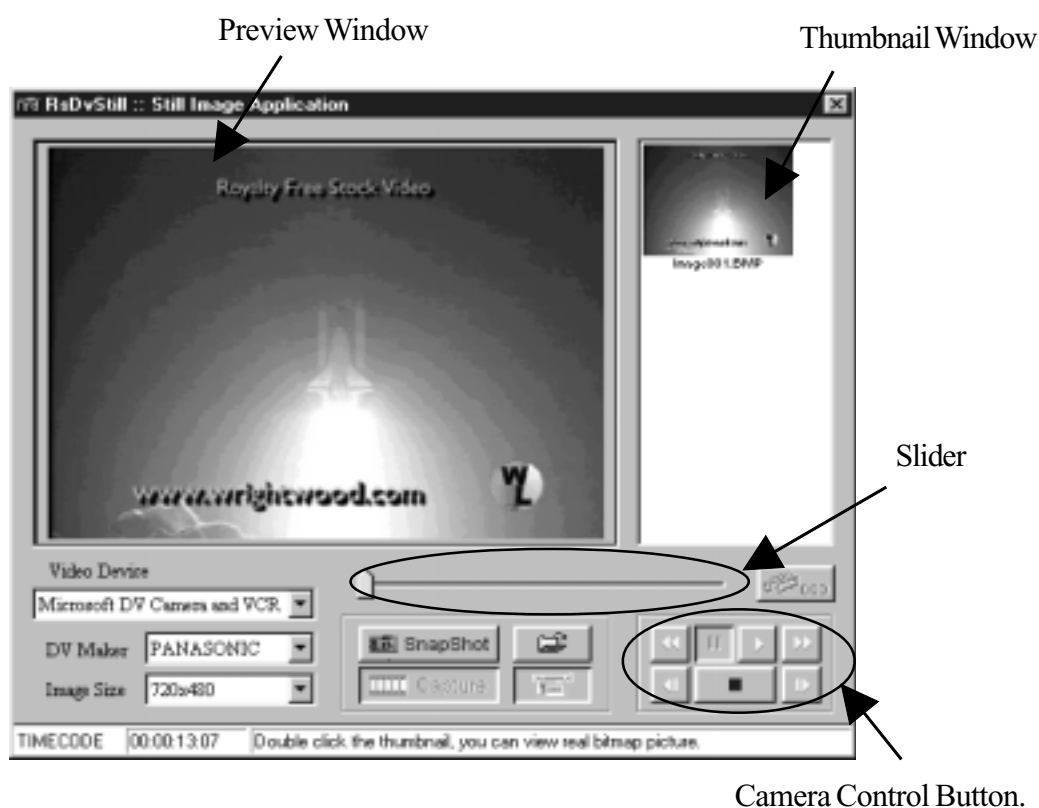
What is the RsDvStill?

This application software has the following functions.

- Preview video data from a DVCAM/a CCD camera.
- Save a still image to a BMP file.


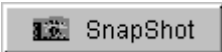







6-1.Main menu

When RsDvStill starts with a DVCAM connected to the CBFW1U, RsDvStill will detect whether the DVCAM is in camera mode or in video mode automatically and pauses the DV tape if the DVCAM is set to video mode and there is a DV tape in the DVCAM.



NOTE

To capture correct DV file, you have to use original DV footages which has continuous Timecode(recording). If the original DV footage has intermittent Timecode, sometimes it may cause system freeze or may not be captured.

Category	Description
DV Maker	This list box shows a list of DVCAM manufacturer such as Sony, JVC, Panasonic, Canon, Sharp, etc. Choose your DVCAM manufacturer. If you can't find it, choose OTHER.
Image Size	There are 3 kinds of resolution: 720 x 480, 360 x 240, 88 x 60. This value means raw data from a DVCAM.
Slider Bar	You can select a favorite scene from video capture data by moving this slider bar. This slider bar is enabled when you click the Capture button.
	You can capture video images for about 1 second by clicking this button. After clicking this button, preview will be stopped.
	You can save a BMP file on the preview window. The BMP file will be saved and hold at the top of the thumbnail window.
Video Device	Video Device displays a list of camera device connected to your PC. If this list box is blank, your camera isn't recognized. “Microsoft DV Camera and VCR” string will appear.
Camera Control Button	When a DVCAM is in video mode, you can control a DV tape as follows.
 , Play, Stop
Pause
 , Fast Rewind, Fast Forward or Slow Rewind, Slow Forward
 , Previous Frame, Next Frame

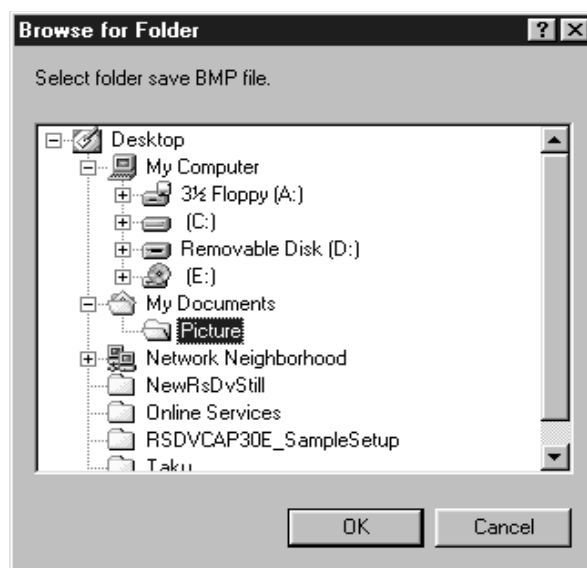
Category	Description
----------	-------------




Time Code

This box shows the timecode information of your DV tape.
This timecode format is HOUR:MINUTE:SECOND:FRAME.



When you click this button, you will see the screen below. You can select a folder where you want to save a BMP file.



This button will be enabled only when you click the  Capture button. When you click the  Capture button, preview will be paused. When you want to resume previewing, click the  button.



This button will be enabled only when you use a CCD camera. When you click this button, you can display the CCD camera control dialog box. With this dialog, you can control a CCD camera. For example, zoom, focus, etc.




6-2.How to save a BMP file

(1)Save a BMP file from a DV tape


1.Set a DV tape in a DVCAM and confirm the DVCAM mode is set to video mode.

Video Mode means you can control a video of a DV tape. If the DVCAM is in camera mode, change mode selection switch from camera mode to video mode slowly as mentioned 5-4.

Capturing a video from a DVCAM in camera mode.

2.Starting RsDvStill, your DV tape will be paused and the  button is disabled.

Set **DV Maker** and decide **Image Size**.



3.Click the  button. You will see the screen below. Select a folder where you want to save a BMP file and click **OK**. If you don't select a folder, a BMP file will be saved in the folder where this application is installed.

4. Find a favorite scene on the DV tape, using the camera control button.


(TIPS)




When the  button is disabled, click the  button and the  button.

You can preview slowly. When the  button is enabled, click the  button.

After that,click the  button and the  button. You can preview slowly.

5.There are two ways to save a BMP file as follows.

5-1.Click the  **SnapShot** button. The BMP file will be saved in the folder under the name of **“Image+ (number) + .BMP”** and the BMP file will hold at the top of the thumbnail window. If you double click the thumbnail, you can view it with real BMP file size.


5-2.Click the  **Capture** button. After capturing, the DV tape will be paused. Then move the slider to a favorite scene and click the  **SnapShot** button. The BMP file will hold as mentioned above. If you want to resume previewing, click the  button.

(2) Save a BMP file from a DVCAM in camera mode or a CCD camera

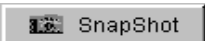
1. Set a DVCAM to camera mode. Camera mode means you can capture a video image. If your DVCAM is in video mode, change mode selection switch from video mode to camera mode slowly as mentioned **5-4. Capturing a video from a DVCAM in camera mode.**

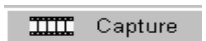


When you use a CCD camera, skip this step.

2. Starting RsDvStill, set **DV Maker** and decide **Image Size**. When you use a CCD camera, **DV Maker** list box is disabled. So, decide **Image Size**.

3. Click the  button. You will see the screen below. Select a folder where you want to save a BMP file. Then click **OK**. If you don't select a folder, a BMP file will be saved in the folder where this application is installed.

4. There are two ways to save a BMP file as follows.

4-1. Click the  button. The BMP file will be saved in the folder under the name of **Image+ (number) + .BMP** and the BMP file will hold at the top of the thumbnail window. If you double click the thumbnail, you can view it with real BMP file.

4-2. Click the  button. After capturing, preview will be paused. Then move the slider to a favorite scene and click the  button. The BMP file will hold as mentioned above. If you want to resume previewing, click the  button.

NOTE

When you use a CCD camera, the  button is enabled. Using this button, you can control the CCD camera. For example, zoom, focus, etc.

7. How to use CompressAVI

What is CompressAVI application software?

This application software has the following functions.

Convert Microsoft DV-AVI2 format video file to another format video file bi-directionally.

As current existent video editing software don't support MS DV-AVI2 format video file, you have to convert the format of video file which is captured by RsDvCap before editing.

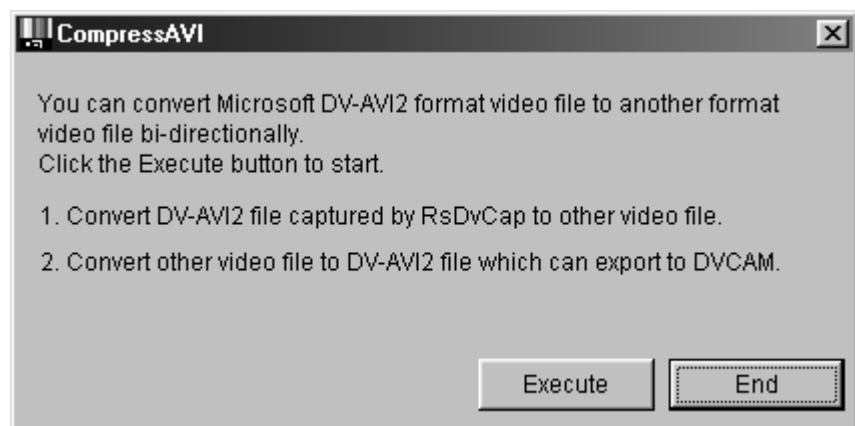
And after editing, if you want to export it to a DVCAM, you have to re-convert video file to MS DV-AVI2 format video file.

Please note, file conversion will take a long time, sometimes over a hour.

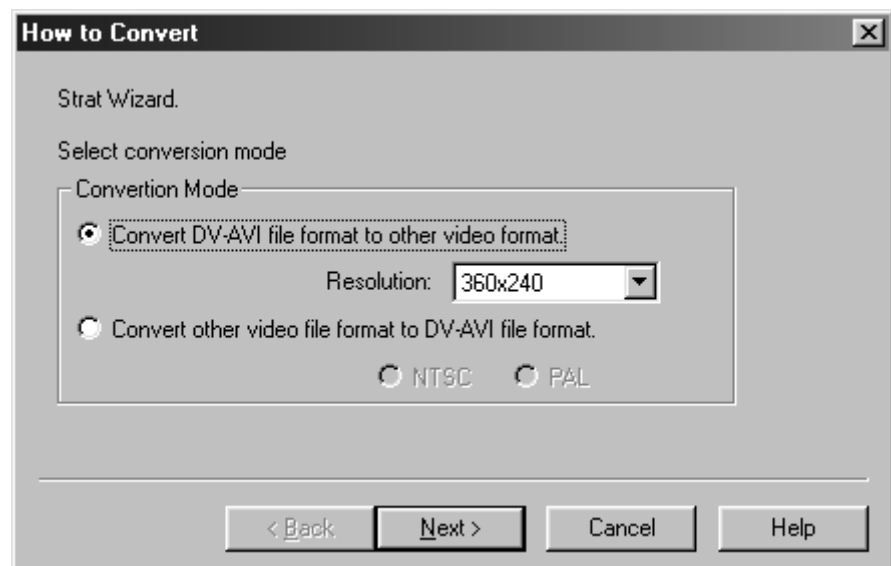
7-1.How to convert the MS DV-AVI2 format into other formats

After you convert the AVI files made by RsDvCap, you can edit it with video editing software.

1.When you start the CompressAVI, you will see the screen below. Click **[Execute]**.

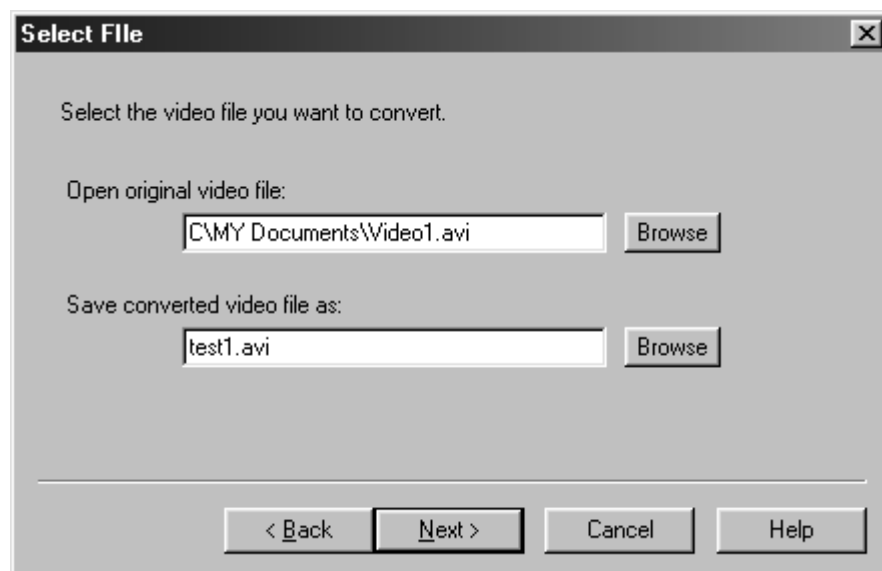


2.Please select “**Convert DV-AVI fomate to other video format**” and select **Resolution**.
Click **[Next]**.



3. Please specify an original video file and a converted video file name.

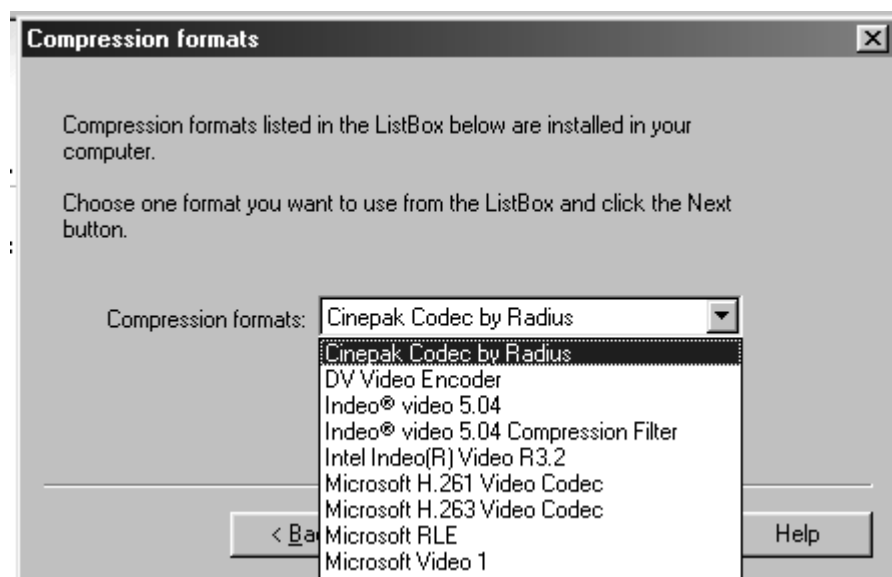
Click [**Next**]. (After conversion, an original video file remains in the HDD.)



4. Please choose a conversion filter from the Compression formats list box.

AVI files made by RsDvCap have a compressed data of DV Video format.

So, select the other compression formats than **DV Video Encoder**.



There are many kinds of compression formats.

(Compression formats appeared in the **[Compression formats]** list box depend on your system)

Popular compression formats are explained below.

1.Microsoft Video1

It does not take much time to convert because this type will lose quality and cause poor image.

2.Microsoft MPEG4

If you use this type of codec, file size will be compressed to about one-tenth and keep good quality.

3.Intel Indeo(R) video3.2

This type of codec was invented by Intel.

Compression rate and quality get better than Microsoft Video1

4.Intel Indeo(R) video5

Compression rate will get better under MMX(R) or Pentium(R) II processor.

5.CinePak Codec

It takes much time to convert but this type will keep quality.

6.DV Video Encoder

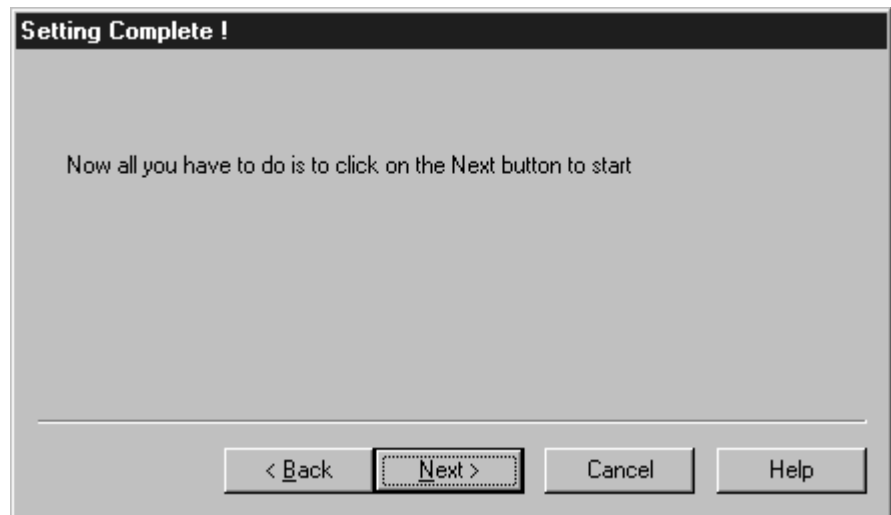
This type of codec can capture a video from a DVCAM in real time.

RsDvCap uses this type of compression and creates AVI files.

7.Non compression

This type saves data without compression. To make data in **[Non compression]**, it is necessary to have Windows98 Second Edition, Windows 2000 or Windows ME.

5. Click **[Next]**. The file conversion starts. It takes much time to convert an AVI file.
Conversion time depends on the type of compression format. Please wait patiently.



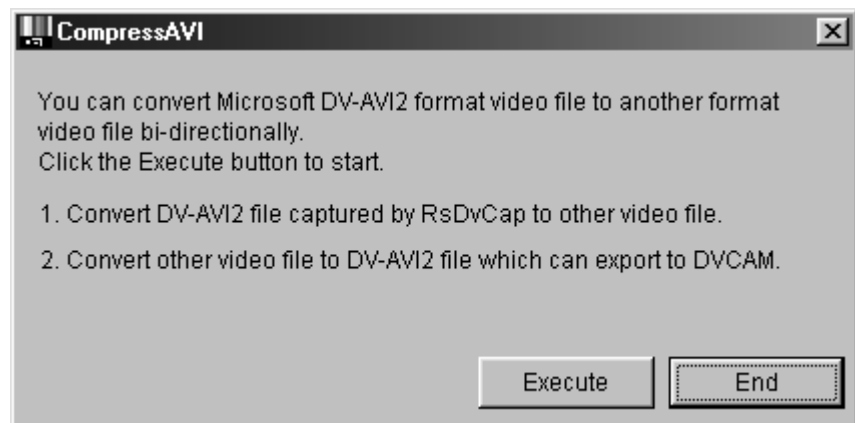
6. When conversion ends, you will see the screen below. Click **[Finish]**.
You can now do a video editing with your video editing software.



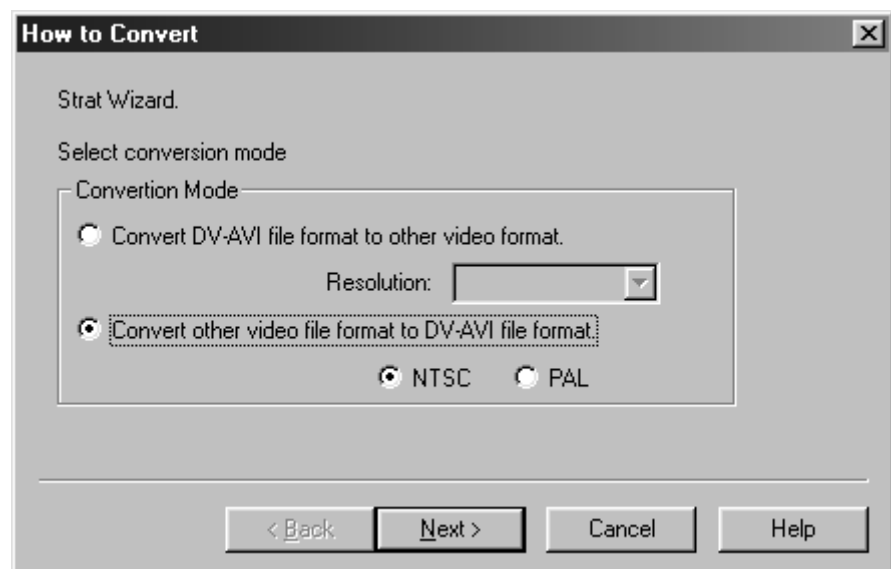
7-2.How to convert other formats to the MS DV-AVI2 format?

You can export a video to a DVCAM after you convert an existing AVI file to the MS DV-AVI2 format.

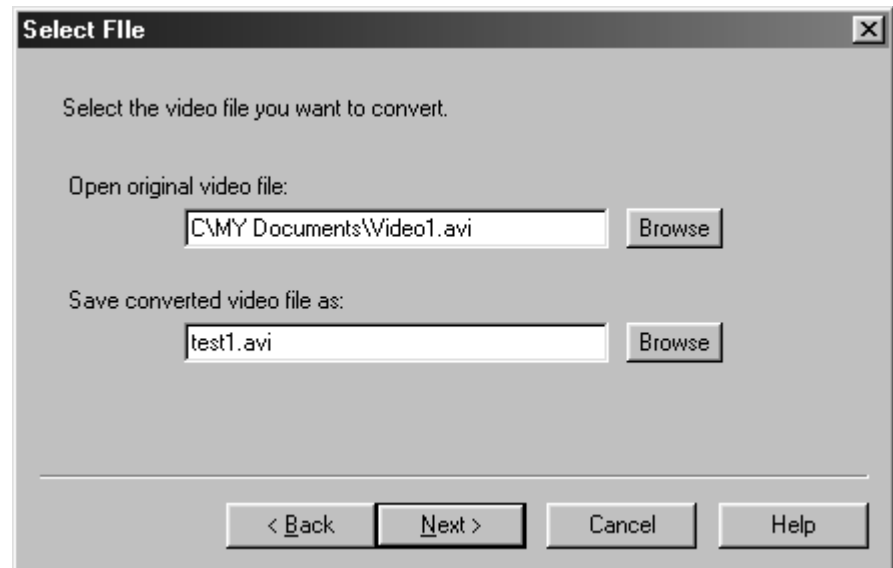
1. When you start the CompressAVI, you will see the screen below. Click **[Execute]**.



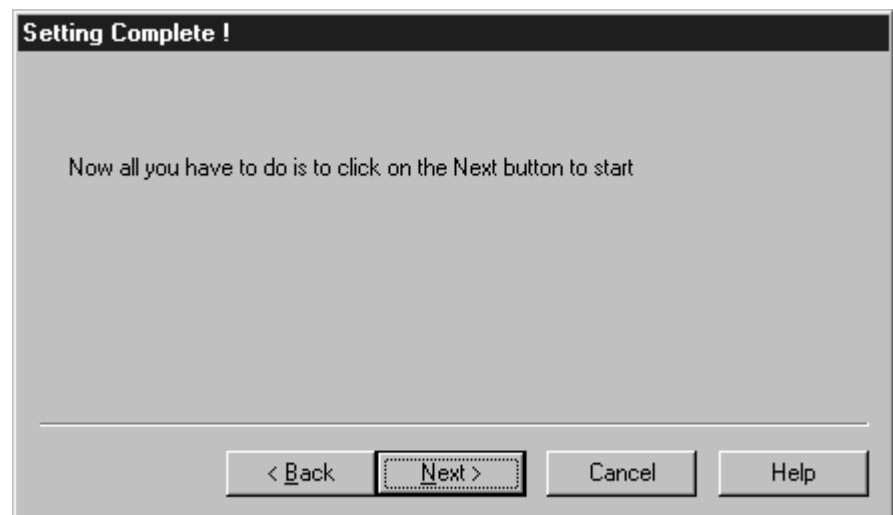
2. Please select **“Convert other video file format to DV-AVI file format”** and choose NTSC or PAL. NTSC is used in the U.S.A. PAL is used in Europe and Asia(except Japan). Then click **[Next]**.



3. Please specify an original video file and a converted video file name. Click **[Next]**.



4. Click **[Next]**. It may take much time to convert an AVI file. Please wait patiently.



5. When conversion ends, you will see the screen below. Click **[Finish]**.

You can now export the converted data to a DVCAM by using RsDvCap.



8.Ulead Video Studio

Ulead VideoStudio

This software in this package treats MS DV-AVI2 format video file directly and you don't need to convert video files before and after editing.

For more information, refer to the Video Studio User's Manual.

Follow the steps below to install Ulead Video Studio.

- 1.Double click ***“My Computer”***.
- 2.Insert the Ulead Video Studio CD-ROM and double click your CD-ROM icon.
- 3.Open ***“VideoStudio 4.0 SE Basic”***.
- 4.Double-click on the ***“Setup.exe”***.
- 5.Follow the instructions on the screens.

This Ulead Video Studio 4.0 SE has the following new functions.

a)Multiple file play back:

- You can export DV-AVI2 file more than 2 GBytes onto a DV tape even if your file system is FAT16.
- You can export DV-AVI file more than 4 GBytes onto a DV tape even if your file system is FAT32.

b)You can capture a still image from a DVCAM.

c)You can capture music onto a DV tape and save it as MP3.

You can export MP3 onto a DV tape.

9. Registration and Tech-Support

9-1. How to Register

We highly recommend to register yourself as our customer through our on-line registration.

1. On the Internet, access our site (<http://www.ratocsystems.com/english/>)
2. Follow window menu guide to register.
3. Fill out and submit the registration form.

9-2. Software Update and Support

-Software Update-

The latest driver and application software are subject to change for improvement or bug fix.

You can download the latest version from our web site.

(<http://www.ratocsystems.com/english/>)

-Technical Support-

You can get a Tech support from RATOOC at the following.

(Open Monday - Friday, 9:30 A.M. to 5:00 P.M. (PST))

RATOOC Systems International, Inc. Tech support

Address: 1933 O'Toole Avenue Suite A109

San Jose, CA 95131, U.S.A.

Phone : (408)955-9400

Fax : (408)955-9402

E-mail : int-support@rexpccard.co.jp

Web : <http://www.ratocsystems.com/english/>

NOTE

Please include the following information:

- Our product name, serial number, and product description
- Host Computer Name, Windows version
- Application software/driver version

10. Specifications

- Compliance with 32-bit PCI Local Bus 2.1
- 32-bit PCI bus master DMA transfers up to 132MB/sec in burst mode
- USB 1.1 compliant
- FullSpeed(12 Mbps) support
- IEEE1394-1395,IEEE1394.a compatible PHY chip
- 100,200,400 Mbps automatic detect and support
- OHCI 1.0 compatible Link chip.Physical DMA support
- Two 6p-1394 external ports,One 6p-1394 internal port
Two USB 1.1 ports
- Class 1(15W) cable power is available through 6p-1394 each port
Cable power source is supplied from a internal HD power connector

Appendix

Trademarks

-Windows is a registered trademark of Microsoft Corporation.

-Other brand and product names may be registered trademarks or trademarks of their respective holders.

Regulatory Agency Notice

I)FCC Statement

This equipment has been tested and found to comply with the limits for a Class B digital device, pursuant to Part 15 of the FCC Rules. These limits are designed to provide reasonable protection against harmful interference in a residential installation. This equipment generates, uses and can radiate radio frequency energy and, if not installed and used in accordance with the instructions, may cause harmful interference to radio communications. However, there is no guarantee that interference will not occur in a particular installation. If this equipment does cause harmful interference to radio or television reception, which can be determined by turning the equipment off and on, the user is encouraged to try to correct the interference by one or more of the following measures:

- (1) Reorient or relocate the receiving antenna.
- (2) Increase the separation between the equipment and receiver.
- (3) Connect the equipment into an outlet on a circuit different from that to which the receiver is connected.
- (4) Consult the dealer or an experienced radio/TV technician for help.

Changes or modifications not expressly approved by the party responsible for compliance may result in this unit not complying with FCC Rules Part 15.

II)CE Statement

This device complies with EN55022(class B) and EN50082-1

WARNING If you ignore this notice, you risk your own life. You must follow for your personal safety.

CAUTION If you ignore this notice, you may be hurt or your system may be damaged.

<u>WARNING</u>
<ul style="list-style-type: none">• Never attempt to disassemble the hardware. Also, never bend, drop, damage or subject the hardware to heavy pressure.• If you use the wet hardware with water, medicines, or oils, etc., you risk having struck by an electric shock or causing a fire.

<u>CAUTION</u>
<ul style="list-style-type: none">• Never subject this product to static electricity because this product is electronic appliance.• Keep this product away from devices which generate noise such as a radio, television set, audio appliance or motor in order to avoid to fail to work.• Do not keep this product in the following places:<ul style="list-style-type: none">-High temperature and humidity-Places where temperature changes intensely-Places exposed to extreme dust-Places where vibrations or shocks occur-Places subject to devices with magnetic influence such as a magnet, speaker box, and television sets.• This product is not meant to be used for equipments/appliances related to human life or high level reliability such as medical appliances, atomic appliances, aerospace appliances, or transportation appliances. If you equip this product with those appliances and cause you a life or fire accident, we will not be liable to you.