



Parallel Port SmartMedia Reader/Writer

REX-SMA02U

User Guide

February 1 1999

Rev. 1.0

 **RATOC Systems, Inc.**

REX-SMA02 User Guide

FCC Statement	1
1. Introduction	3
1-1. Features	3
1-2. About the REX-SMA02U User Guide	3
1-3. Trademarks	3
1-4. Before using the REX-SMA02U	4
1-5. System requirements	4
1-6. SmartMedia compatibility	4
1-7. Check package contents	4
1-8. How to register	5
1-9. Program update and support	5
2. Setup	7
2-1. Connecting the REX-SMA02 to the PC	7
2-2. Installation of the driver for Windows 98	8
2-3. Installation of the driver for Windows 95	12
3. Using the REX-SMA02	17
3-1. Power light and Access light	17
3-2. Inserting the SmartMedia	18
3-3. Removing the SmartMedia	19
3-4. Using data on the SmartMedia	20
3-4-1. The REX-SMA02 in My Computer	20
3-4-2. Write-Protect label	20
3-4-3. Formatting of the SmartMedia	21
4. Uninstalling of the REX-SMA02	23
4-1. To disable the REX-SMA02	23
4-2. To uninstall the REX-SMA02	26

5. Troubleshooting	29
---------------------------	-----------

5-1. The Power light is not turned on	29
5-2. The Removable disk icon is not in My Computer	29
5-3. The SmartMedia is not recognized	29
5-4. Data can not be saved on the SmartMedia	29

6. Specifications	31
--------------------------	-----------

FCC Statement

This equipment has been tested and found to comply with the limits for a Class B digital device, pursuant to Part 15 of the FCC Rules. These limits are designed to provide reasonable protection against harmful interference in a residential installation. This equipment generates, uses and can radiate radio frequency energy and, if not installed and used in accordance with the instructions, may cause harmful interference to radio communications. However, there is no guarantee that interference will not occur in a particular installation. If this equipment does cause harmful interference to radio or television reception, which can be determined by turning the equipment off and on, the user is encouraged to try to correct the interference by one or more of the following measures:

- (1) Reorient or relocate the receiving antenna.
- (2) Increase the separation between the equipment and receiver.
- (3) Connect the equipment into an outlet on a circuit different from that to which the receiver is connected.
- (4) Consult the dealer or an experienced radio/TV technician for help.

Changes or modifications not expressly approved by the party responsible for compliance may result in this unit not complying with FCC Rules Part 15.

1. Introduction

Thank you for purchasing the REX-SMA02U kit. This kit contains the REX-SMA02 Parallel port SmartMedia Reader/Writer, a power cable for the keyboard port, a power cable for the USB port, the support software for Windows 95/98 and this document. This guide contains the most complete information for installation and operation of the REX-SMA02 Parallel port SmartMedia Reader/Writer at press time. Be sure to read this guide before using the SmartMedia Reader/Writer the first time. The README file included on the supplied floppy disk may contain more recent information which may not be included in this guide. Be sure to read the README file as well.

1-1. Features

- Supports IEEE1284 Nibble mode, PS/2 8-bit bi-direction mode and EPP mode
- Supports up to 128MB SmartMedia
- Supports both 3.3V and 5V SmartMedia by automatic SmartMedia-type detection
- Easy to install
Just plug connectors to the parallel port and keyboard port without opening your PC
- Supports full color printers-Our pass through unit enables automatic detect and negotiation when Windows 95/98 startup
- Attach power through the USB port, keyboard port or AC adapter

1-2. About the REX-SMA02U User Guide

- Information in this document is subject to change without notice.
- If you have any questions or find errors in this guide, do not hesitate to let us know.

1-3. Trademarks

- Windows is a registered trademark of Microsoft Corporation.
- SmartMedia is a registered trademark of TOSHIBA Corporation.
- Other names of companies and products appearing in this guide are trademarks or registered trademarks respectively of those companies.

1-4. Before using the REX-SMA02U

- Never attempt to disassemble the adapter and cables.
- Do not bend, drop or strike the adapter and cables, or subject them to heavy pressure.

1-5. System requirements

- Standard PC parallel port
- AT or PS2 Keyboard port, or USB port
- Windows 95 or Windows 98

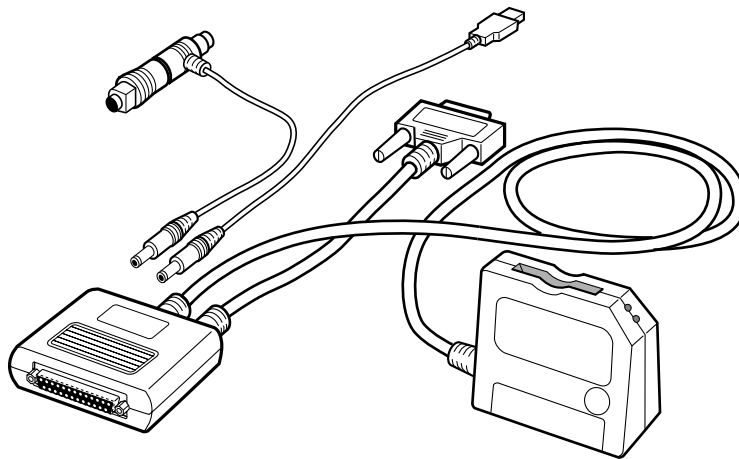
1-6. SmartMedia compatibility

Any one of the following SmartMedia may be used:

2MB/5V, 4MB/5V, 4MB/3.3V, 8MB/3.3V, 16MB/3.3V, 32MB/3.3V, 64MB/3.3V, 128MB/3.3V

1-7. Check package contents

- REX-SMA02 Parallel port SmartMedia Reader/Writer
- Power cable for keyboard port with PS/2 conversion connector



- Power cable for USB port
- Support software floppy disk for Windows 95/98
- User Guide (This document)

NOTE

- If anything is missing, contact your store or RATOC Systems.

1-8. How to register

1. On the Internet, access our site. (<http://www.rexpccard.co.jp>)
2. Follow window menu guide to register.
3. Fill out and submit the registration form.

1-9. Program update and support

We recognize the need to keep users up-to-date with the latest software releases. Software updates can be downloaded from our web site. (<http://www.rexpccard.co.jp>)

Technical support is handled by RATOOC Systems, Inc. at the following:

RATOOC Systems, Inc.

1-6-14 Shikitsu-higashi, Naniwa-ku, Osaka, JAPAN 556-0012
FAX : +81-6-6633-3553 E-mail : int-support@rexpccard.co.jp

NOTE

- Please include the following information to help us to assist you in the event of a problem:
 - Model type, serial number and product description
 - Host computer name, System BIOS name and version
 - Software driver product type and version number

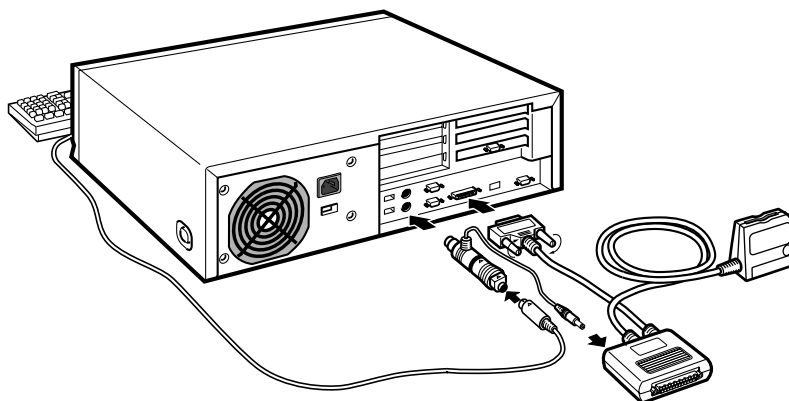
2. Setup

Here is how to get started using the REX-SMA02:

1. Connect the REX-SMA02 to the PC (→Page 7).
2. Install the driver for the REX-SMA02. If you will use the REX-SMA02 with Windows 98, refer to **2-2. Installation for Windows 98** (→Page 8). If you will use it with Windows 95, refer to **2-3. Installation for Windows 95** (→Page 12).

2-1. Connecting the REX-SMA02 to the PC

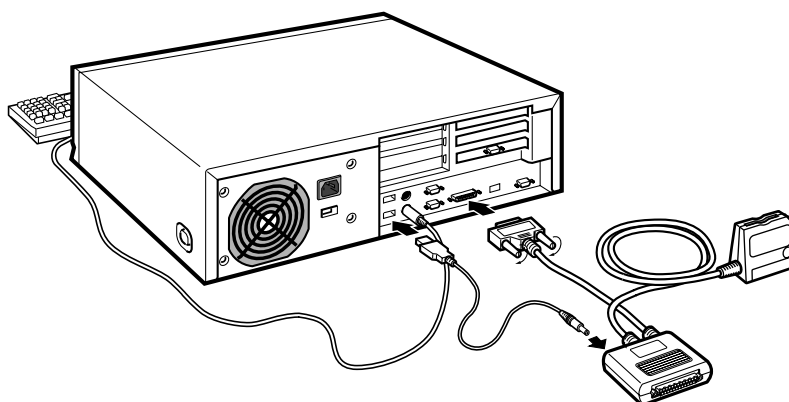
1. Shutdown and turn off the PC.
2. Connect the cables as following illustrations.



To use the power cable for keyboard port

NOTE

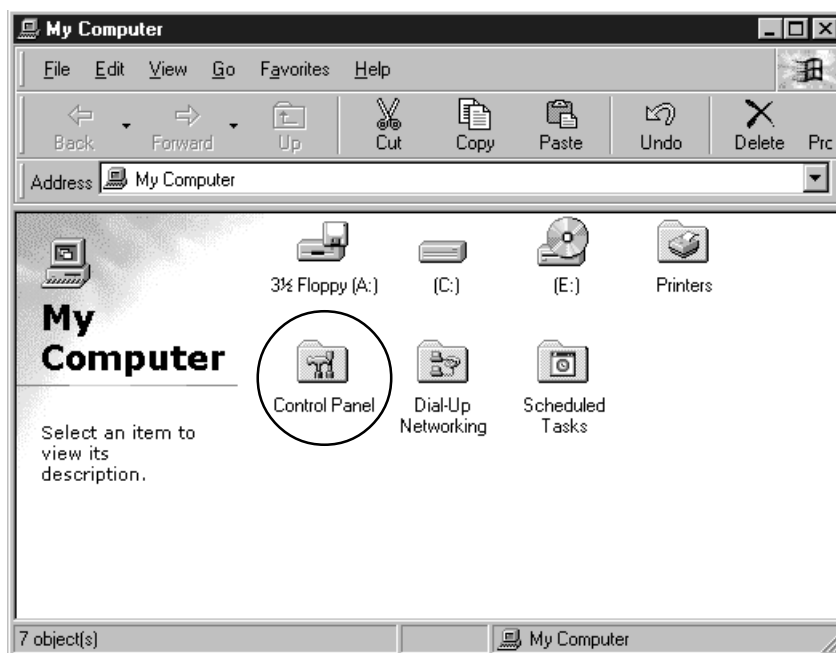
- If your keyboard has an AT connector, connect the PS/2 conversion connector to the keyboard.



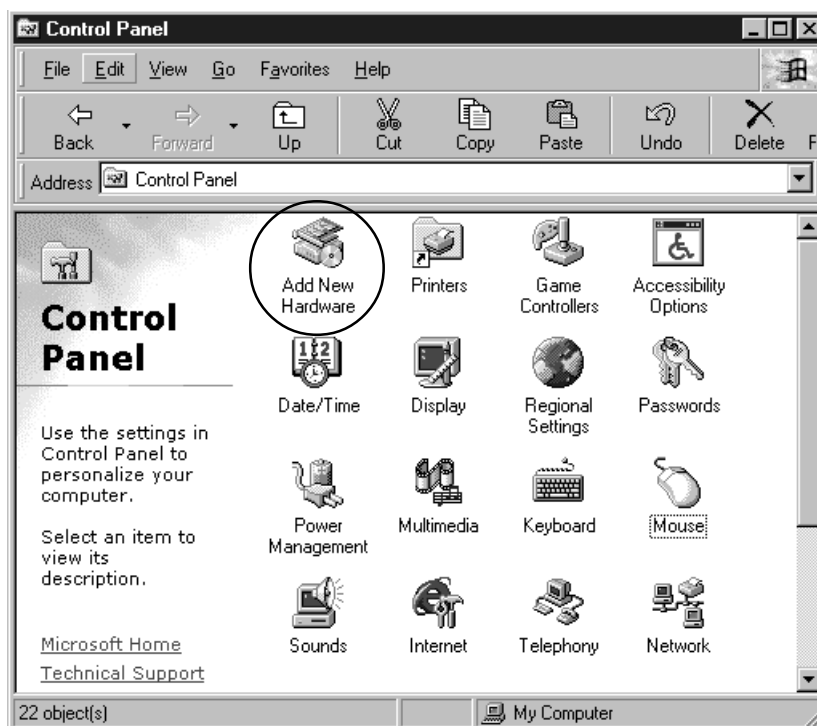
To use the power cable for USB port

2-2. Installation of the driver for Windows 98

1. Open **My Computer**, then double click the **Control Panel** icon.



2. Double click on the **Add New Hardware** icon.



3. When the following window appears, click on the **Next** button.



4. When the following window appears, click on the **Next** button.



5. When the following window appears, select **No. I want to select the hardware from a list** and click on the **Next** button.

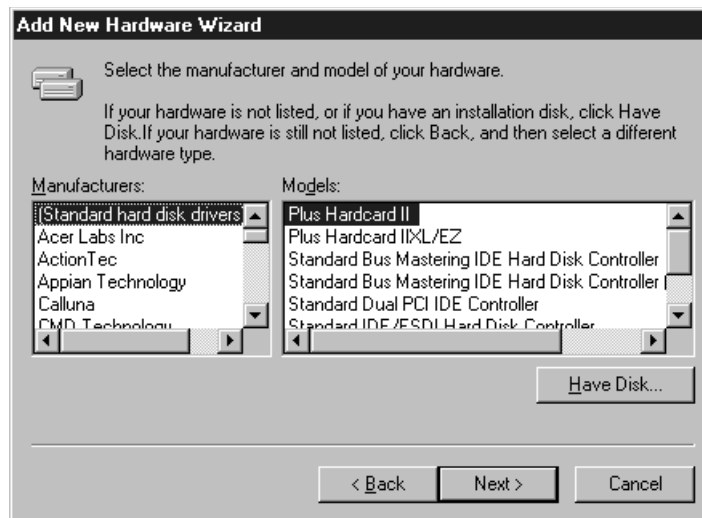


2. Setup

- When the following window appears, select **Hard disk controllers** from the **Hardware type** list then click on the **Next** button.



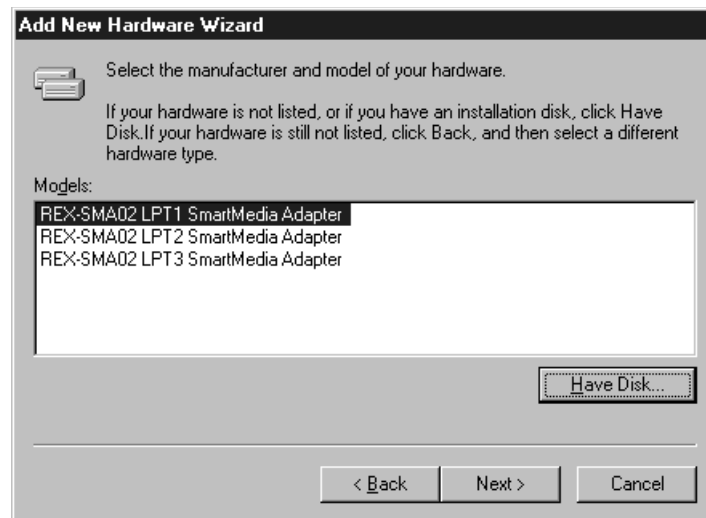
- When the following window appears, click on the **Have Disk** button.



- When the following window appears, insert the Support software floppy disk into the floppy disk drive. Then type **a:** in **Copy manufacturer's files from** box and click on the **OK** button.



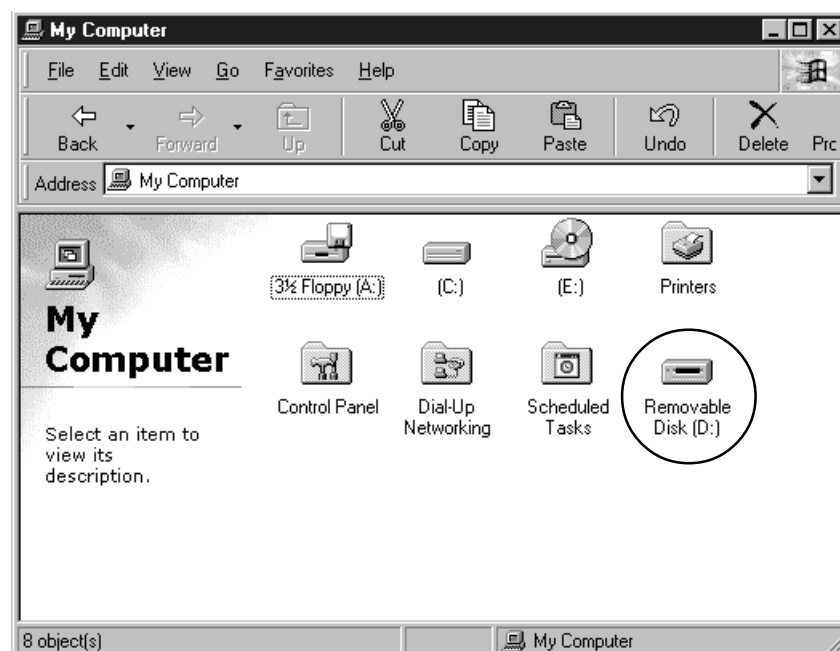
9. When the following window appears, select the LPT port which the REX-SMA02 is connected to from the **Models** list.



10. When the following window appears, click on the **Finish** button.

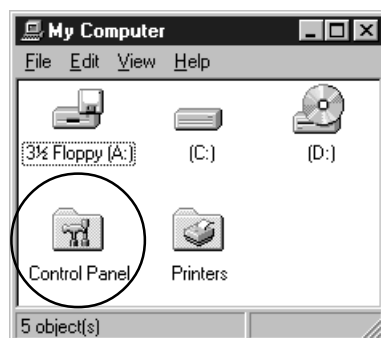


11. If the **Removable Disk** icon appears, installation is complete.



2-3. Installation of the driver for Windows 95

1. Open **My Computer**, then double click the **Control Panel** icon.



2. Double click on the **Add New Hardware** icon.



3. When the following window appears, click on the **Next** button.



4. When the following window appears, select **No** and click on the **Next** button.



5. When the following window appears, select **Hard disk controllers** from the **Hardware type** list then click on the **Next** button.



6. When the following window appears, click on the **Have Disk** button.



2. Setup

- When the following window appears, insert the Support software floppy disk into the floppy disk drive. Then type **a:** in **Copy manufacturer's files from** box and click on the **OK** button.



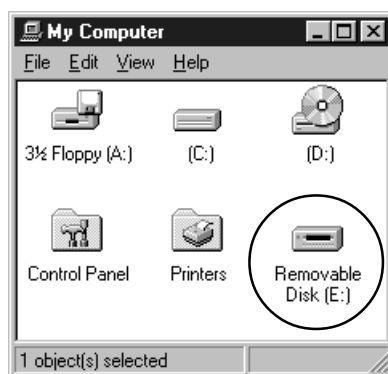
- When the following window appears, select the LPT port which the REX-SMA02 is connected to from the **Models** list.



- When the following window appears, click on the **Finish** button.



10. If the **Removable Disk** icon appears in **My Computer**, installation is complete.



3. Using the REX-SMA02

3-1. Power light and Access light

Power light

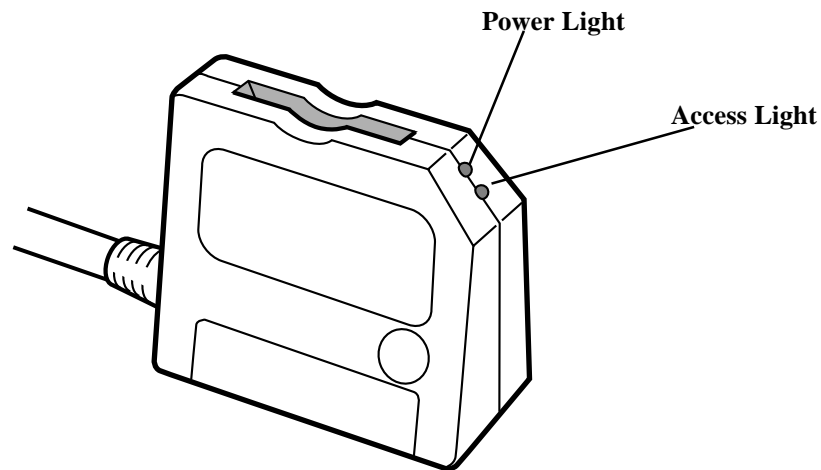
While the PC is on, the REX-SMA02 is ON and the Power light is green.

If the Power light is not ON, the REX-SMA02 might not be connected to the PC correctly.

Make sure that the connectors are connected correctly.

Access light

Indicates the current state of access to the slot. The light is orange when the REX-SMA02 reads or writes data on the SmartMedia.

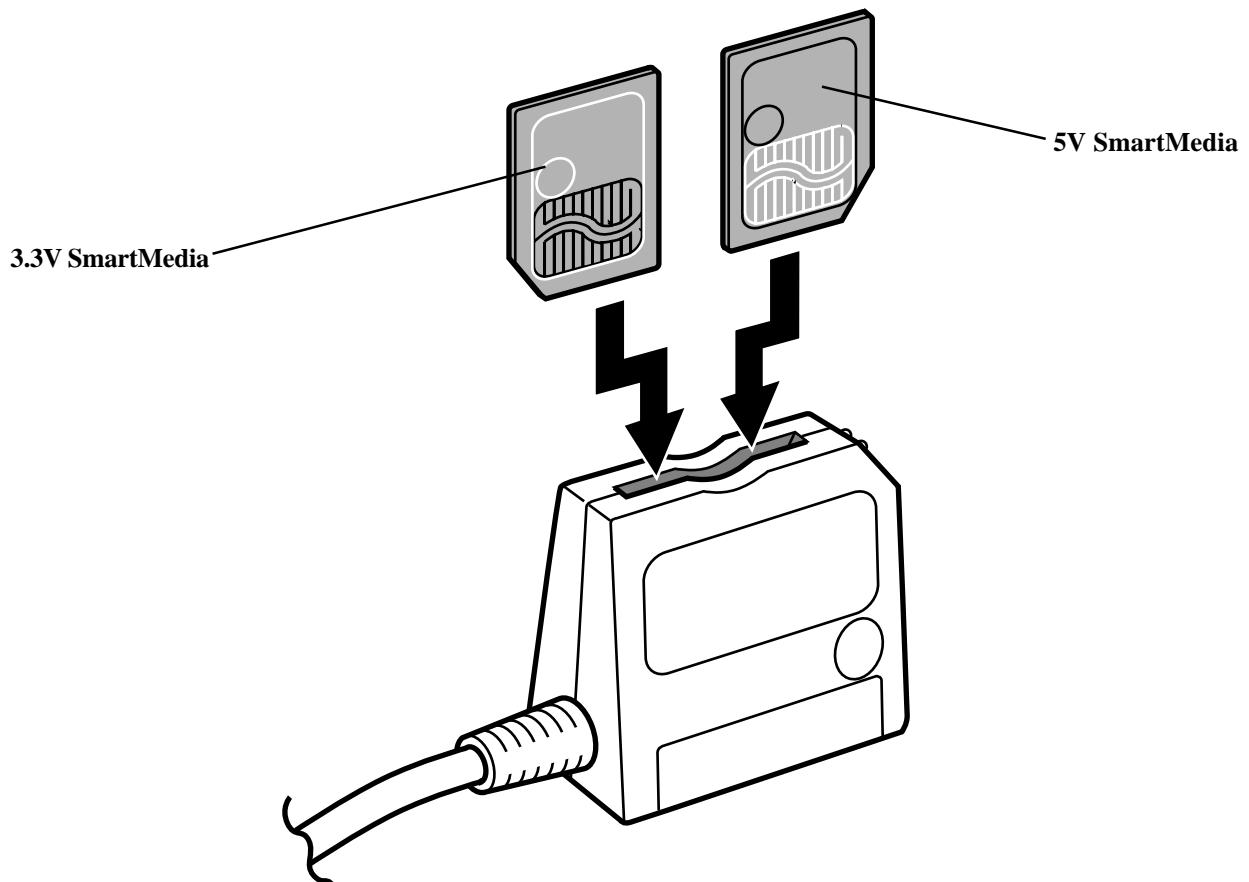


NOTE

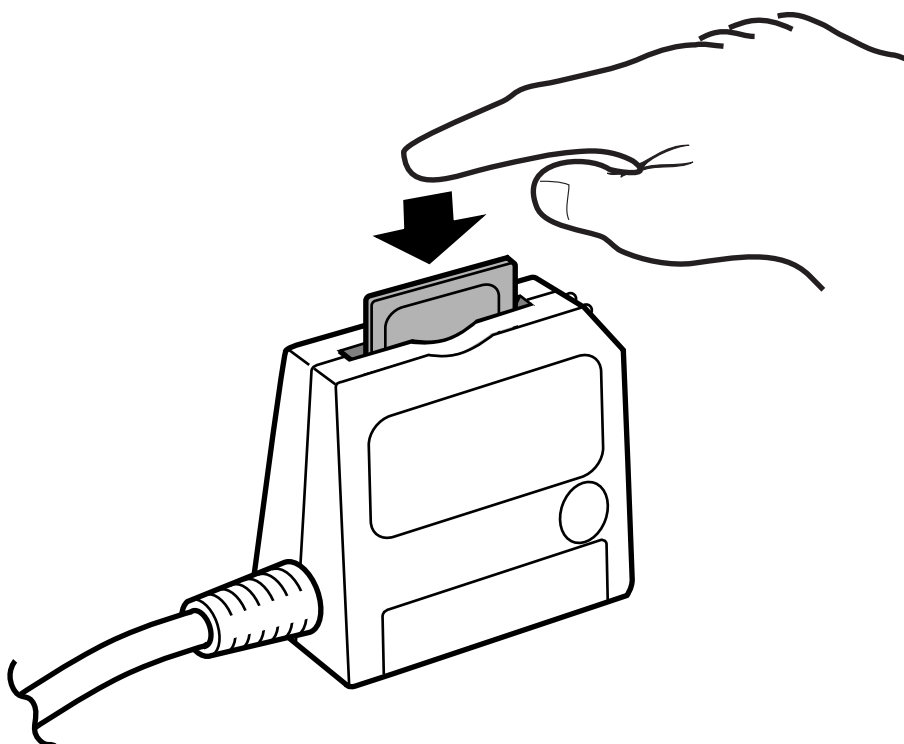
- Do not remove the REX-SMA02 or SmartMedia while the Access light is on.

3-2. Inserting the SmartMedia

1. Insert the SmartMedia into the slot as shown in the illustration.

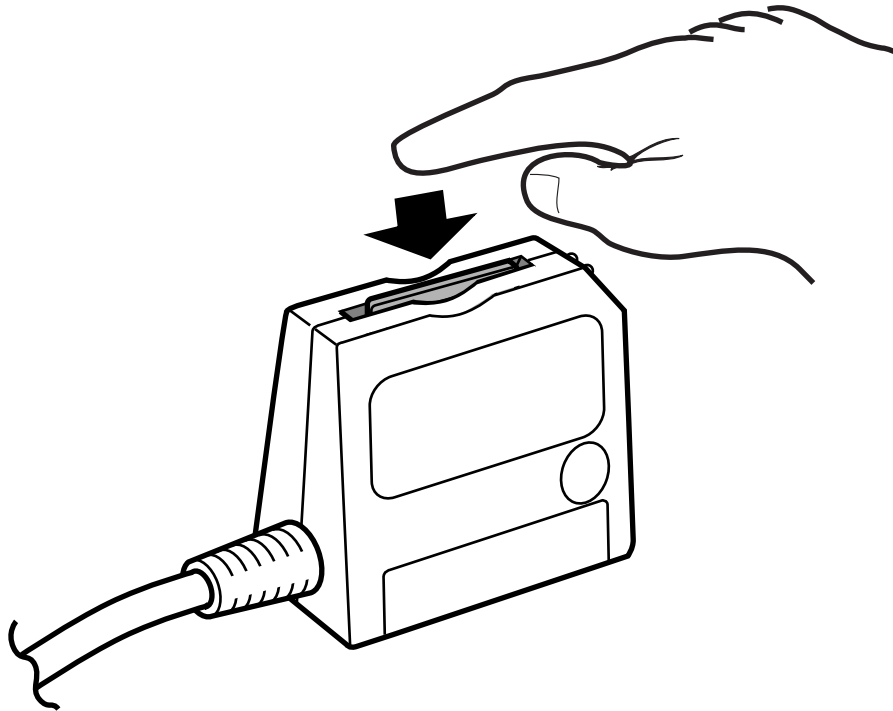


2. Push the SmartMedia until it is firmly seated.

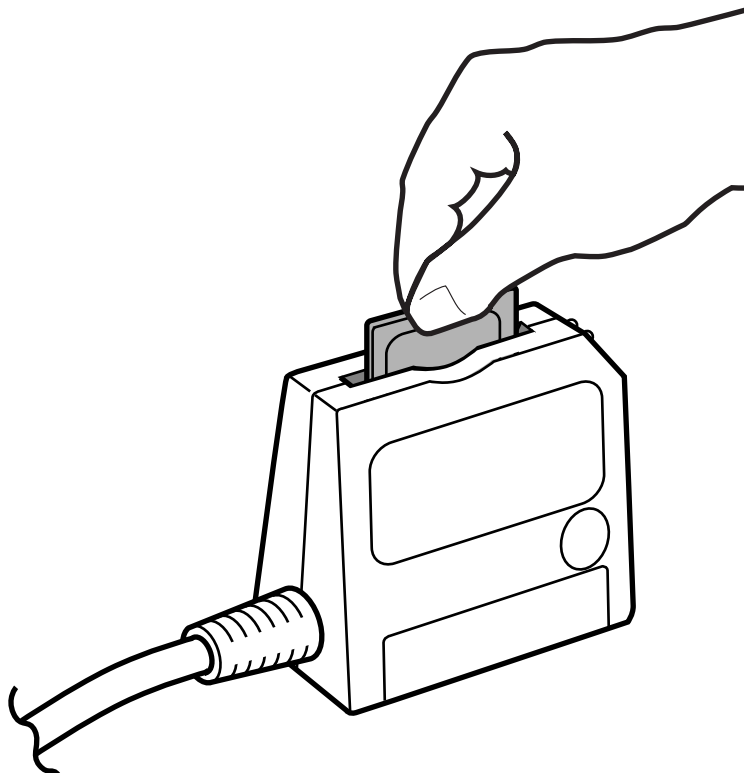


3-3. Removing the SmartMedia

1. Push the SmartMedia. The SmartMedia will pop out.



2. Pick up the SmartMedia from the REX-SMA02 with your hand as shown in the illustration.



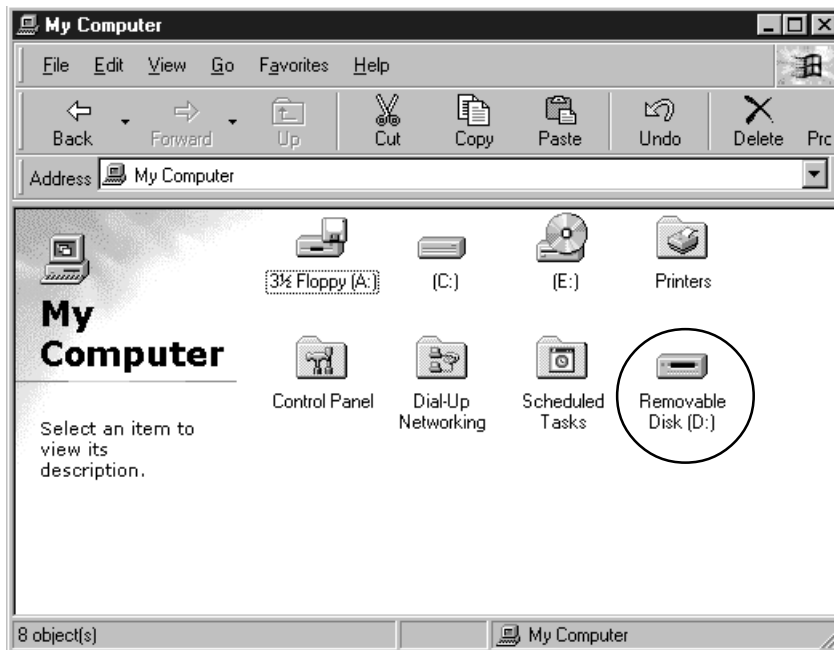
NOTE

- Do not remove the SmartMedia while the Access light is on.

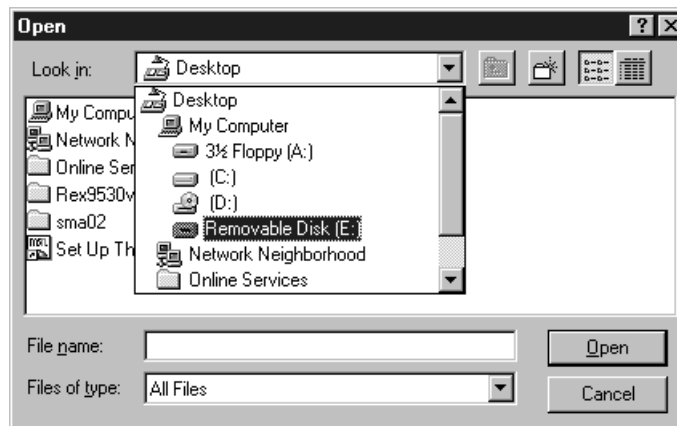
3-4. Using data on the SmartMedia

3-4-1. The REX-SMA02 in My Computer

The REX-SMA02 appears as the **Removable Disk** in **My Computer**.



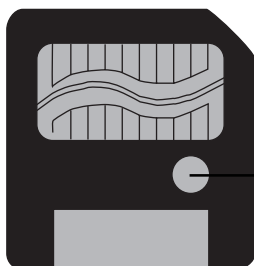
You can handle the SmartMedia in the REX-SMA02 as like a floppy disk.



Example of opening file on the SmartMedia in the REX-SMA02

You can edit digital images on the SmartMedia with image editing application. Using image organizing applications which show thumbnails of digital images or image viewers allows you to handle digital images on the SmartMedia easily.

3-4-2. Write-Protect label

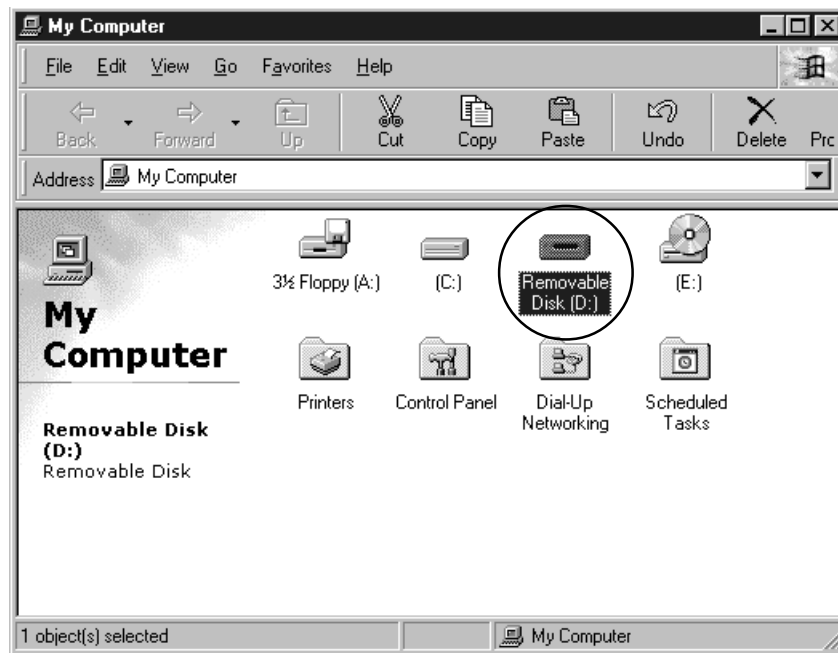


To prevent unintended writing to, erasing from, or formatting of the SmartMedia, put a Write-Protect label on the SmartMedia. For details, refer to the manual of the SmartMedia.

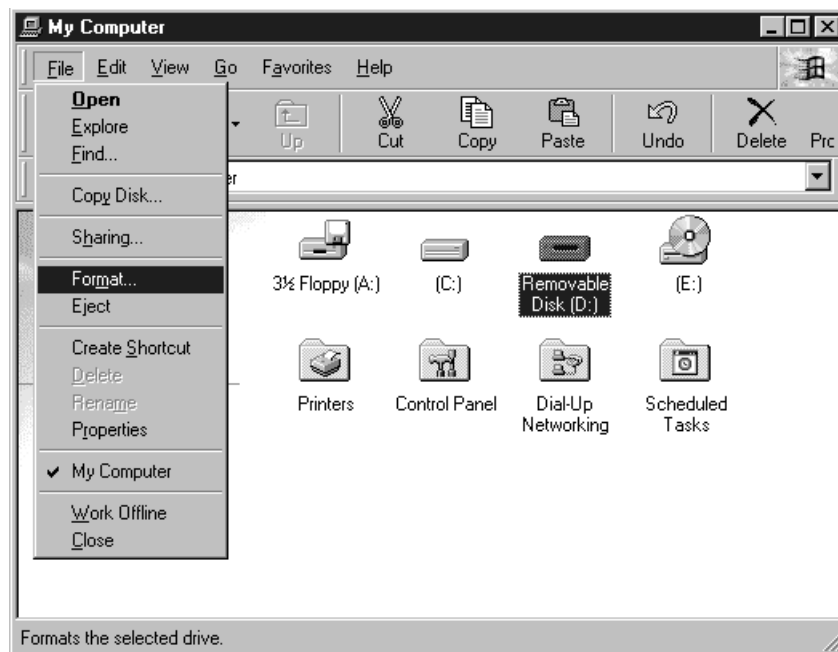
Write-Protect label

3-4-3. Formatting of the SmartMedia

1. In **My Computer**, select the **Removable Disk** icon.

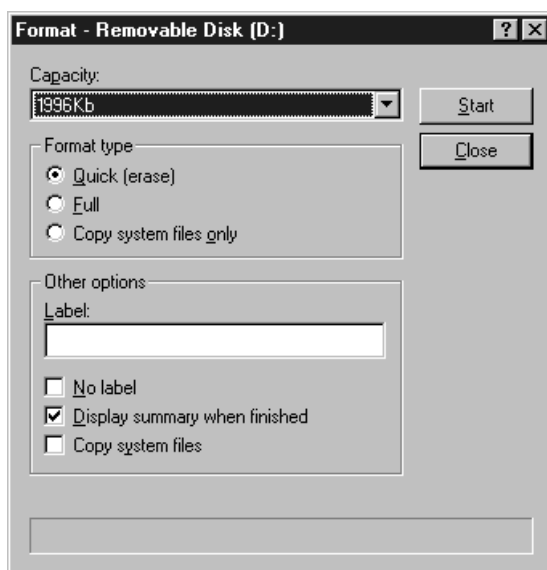


2. From the **File** menu, select **Format**.



3. Using the REX-SMA02

3. When the following window appears, select **Format type** and **Other options**. Then click **Start**.



NOTE

- Before formatting SmartMedia, be certain that no important data is on the SmartMedia. When formatting, all previously-saved data will be erased.
- If you plan to use SmartMedia with digital cameras, you may have to format SmartMedia with the digital camera. Refer to the manual of the digital camera.

4. Uninstalling of the REX-SMA02

4-1. To disable the REX-SMA02

1. Double click on the **Control Panel** icon in **My Computer**.



2. Double click on the **System** icon.

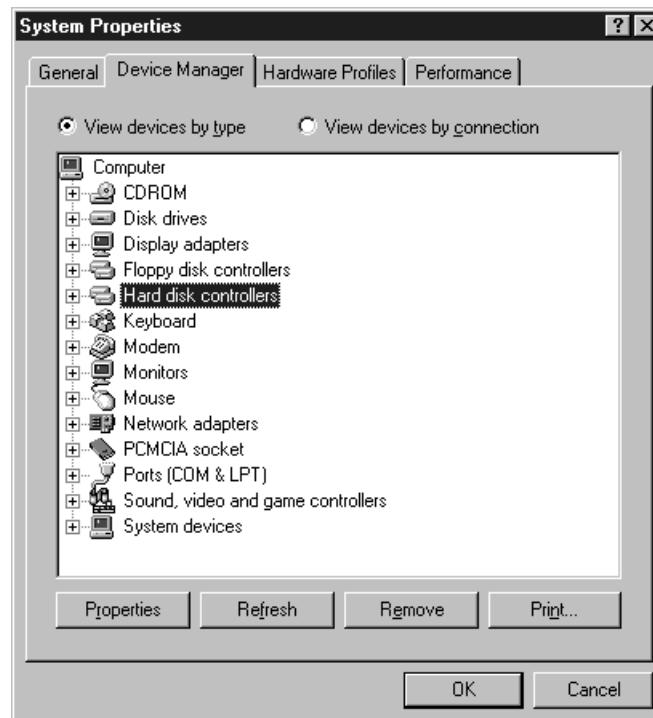


3. Click on the **Device Manager** tab.

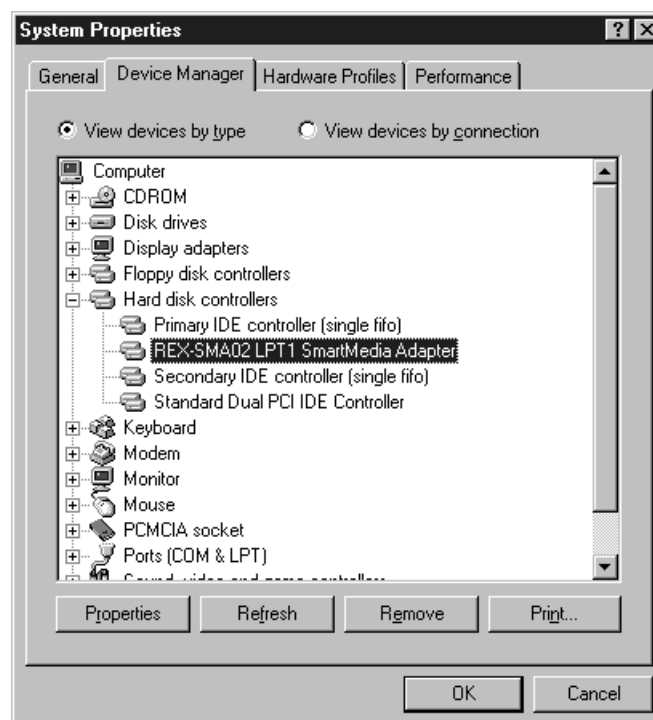


4. Uninstalling of the REX-SMA02

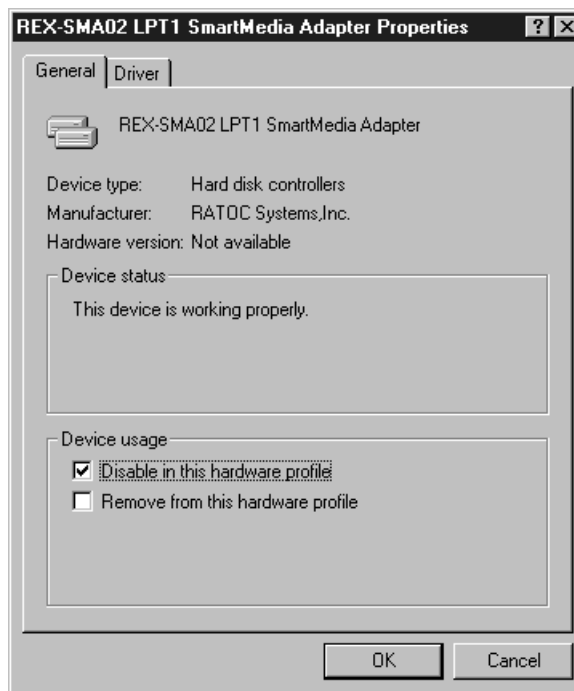
4. Double click **Hard disk controllers** in the list.



5. Select **REX-SMA02 LPT1 SmartMedia Adapter** under **Hard disk controllers**, then click on the **Properties** button.

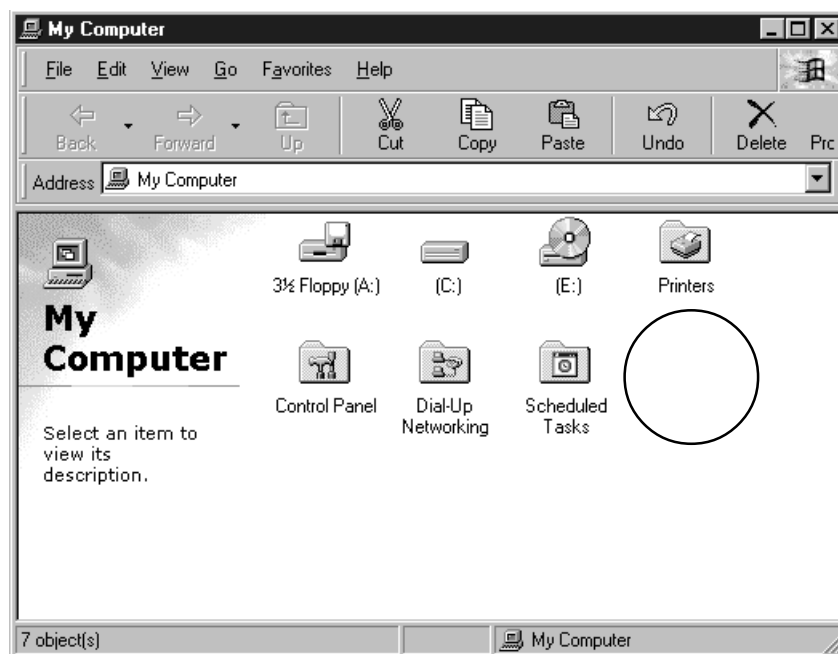


6. When the REX-SMA02 is used for Windows 95B/95C/98, check the **Disable in this hardware profile** box under **Device usage**. Then click on the **OK** button.



When the REX-SMA02 is used for Windows 95/95A, uncheck the **Original Configuration** box under **Device usage**. Then click on the **OK** button.

7. Make sure the **Removable Disk** icon disappears from **My Computer**.



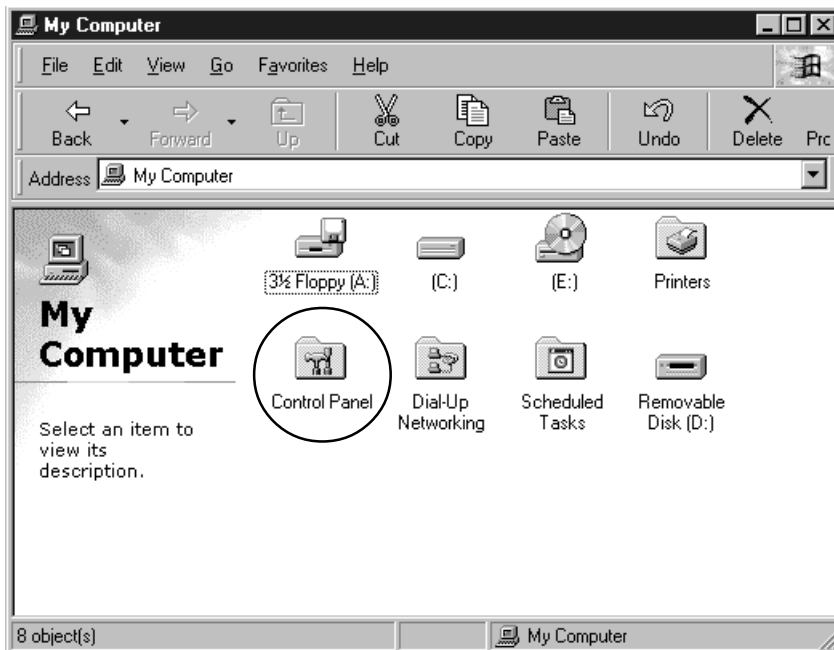
8. Disabling the REX-SMA02 is complete.

NOTE

- If you want to use the REX-SMA02 again, uncheck the **Disable in this hardware profile** or check **Original Configuration** box under **Device usage** in **REX-SMA02 Properties**.

4-2. To uninstall the REX-SMA02

1. Double click on the **Control Panel** icon in **My Computer**.



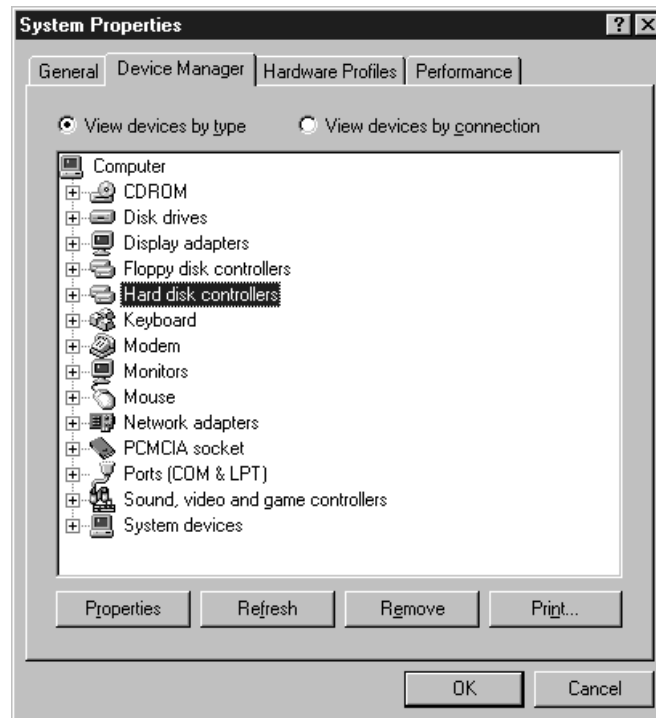
2. Double click on the **System** icon.



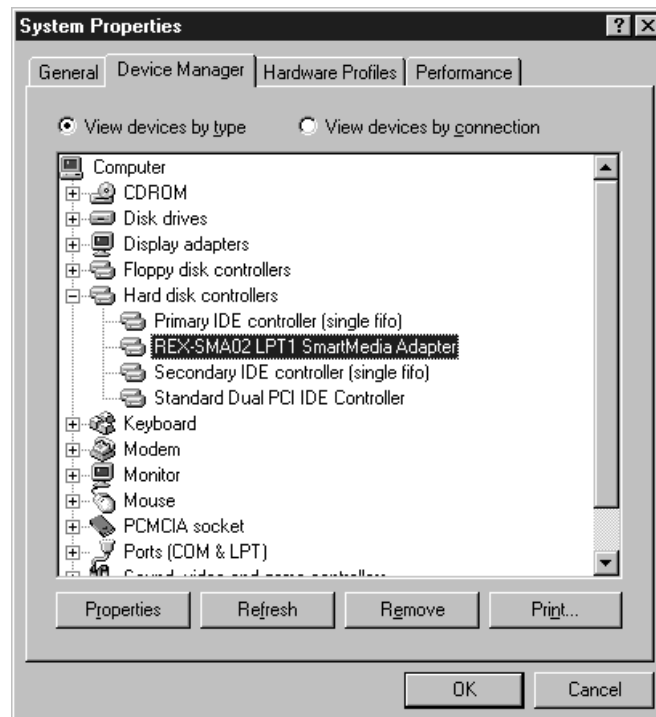
3. Click on the **Device Manager** tab.



4. Double click **Hard disk controllers** in the list.



5. Select **REX-SMA02 LPT1 SmartMedia Adapter** under **Hard disk controllers**, then click on the **Remove** button.



5. Troubleshooting

5-1. The Power light is not turned on

Cause The cables are not connect correctly.

Solution Connect the cables correctly and firmly.

5-2. The Removable disk icon is not in My Computer

Cause The driver software is not installed correctly.

Solution Install the driver software referring to 2-2 (→Page 8) or 2-3 (→Page 12).

Cause The REX-SMA02 is disabled in Device Manager.

Solution Enable the REX-SMA02 referring to 4-1 (→Page 23).

5-3. The SmartMedia is not recognized

Cause The SmartMedia is not inserted correctly.

Solution Insert the SmartMedia correctly referring to 3-2 (→Page 18).

5-4. Data can not be saved on the SmartMedia

Cause The SmartMedia is write-protected.

Solution Remove the SmartMedia from the REX-SMA02, then take off the Write-Protect label from the SmartMedia. For more information on write protection of the SmartMedia, refer to the SmartMedia manual.

6. Specifications

Interface

IEEE 1284 Nibble mode
PS/2 8-bit bi-direction mode
EPP mode

Operating Environment

Temperature from 0 to 55°C
Relative humidity 95% maximum (Non-condensing)

Power Requirements

Voltage +5V
(Supplied from keyboard connector, USB connector or AC connector)