

*USB2.0 Storage Enclosure kit*  
**U2EC5**

**User's Guide**

Rev.1.0

July 2001

 **RATOC Systems, Inc.**

# Contents

<b>1. Before installation .....</b>	<b>3</b>
<b>1-1. Package Confirmation.....</b>	<b>3</b>
<b>1-2. System Requirements .....</b>	<b>3</b>
<b>1-3. Restrictions.....</b>	<b>3</b>
<b>1-4. Front/Back Side Function .....</b>	<b>4</b>
<b>2. Setup.....</b>	<b>5</b>
<b>2-1. Mounting a drive .....</b>	<b>5</b>
<b>2-2. Connecting a power cable and USB cable .....</b>	<b>8</b>
<b>2-3. Installing USB driver .....</b>	<b>8</b>
<b>3. Removing the U2EC5 .....</b>	<b>15</b>
<b>4. Disk Formatting and Partitioning Utility .....</b>	<b>16</b>
<b>5. Registration and Tech-support .....</b>	<b>19</b>
<b>Appendix.....</b>	<b>20</b>

---

# 1. Before installation

---

## 1-1. Package Confirmation

Check package contents:

- U2EC5 5 inch case
- AC Cable
- One USB2.0 Compliant cable(1m)
- Mounting screws
- Support Software CD-ROM
- Installation guide(This document)
- Software License Agreement

### NOTE

**If any of these items are missing from the retail package, contact your supplier immediately.**

## 1-2. System Requirements

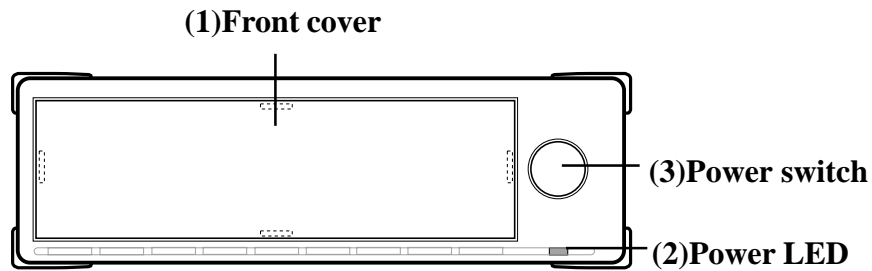
- Windows 98SE/Windows Me/Windows 2000
- PC with built-in USB port or with our add-on USB PCI board/PC card

## 1-3. Restrictions

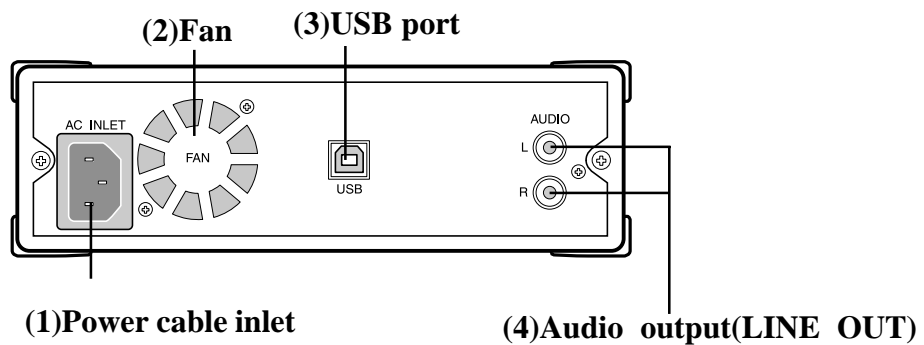
To enjoy USB2.0 High-Speed performance, our add-on USB2.0 PCI board(PCIU2)/PC card(CBU2) and its EHCI driver are required. No other USB2.0 PCI boards/PC Cards or drivers are guaranteed.

## 1-4. Front/Back Side Function

[Front Side]



[Back Side]



[Front Side]

### (1)Front cover

You have to remove this cover when you mount a 5 inch drive.

### (2)Power LED

When this drive is powered, this green power LED comes on.

### (3)Power switch

By pushing this button, you can turn a drive on or off.

[Back Side]

### (1)Power cable inlet

Connect the bundled power cable.

### (2)Fan

The fan is used to force out air in the U2EC5 to keep it cool.

### (3)USB port

Connect the bundled USB cable to the PC.

### (4)Audio output(LINE OUT)

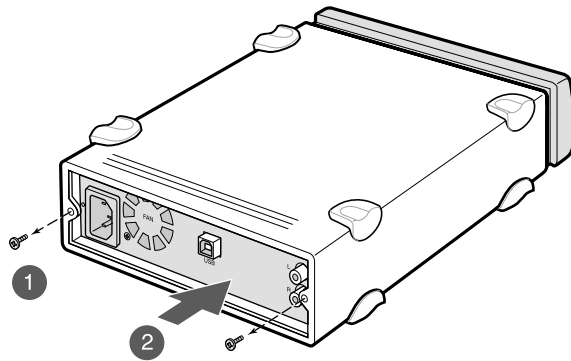
If you connect a speaker with an amplifier, you can listen to sound.

## 2. Setup

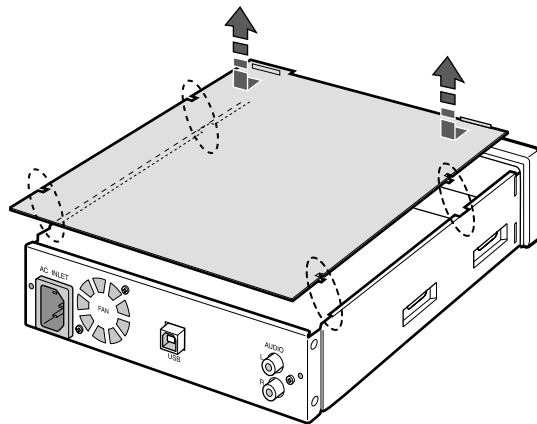
To set up the U2EC5, follow the steps:

### 2-1. Mounting a drive

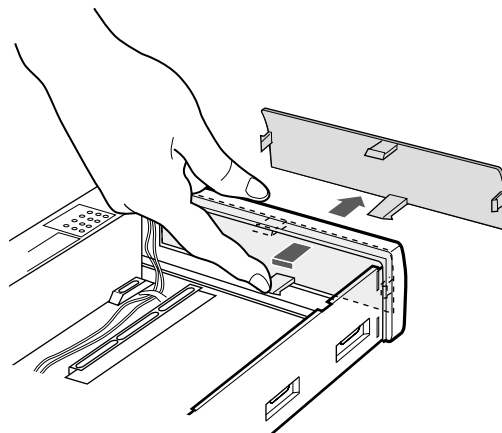
(1) Release the screw at rear panel. Then, slide out the inner case by pushing back panel.



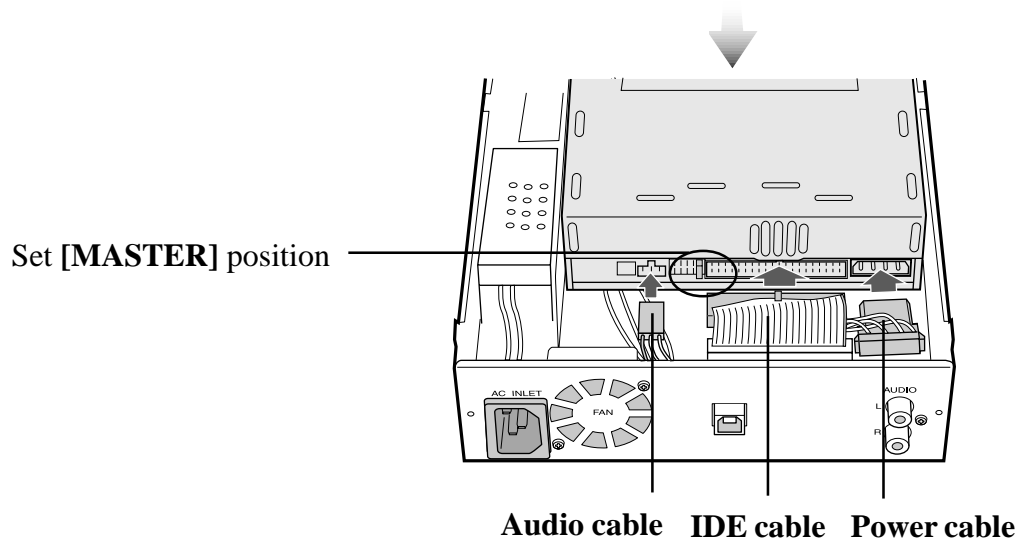
(2) Slide the top cover off inner case.



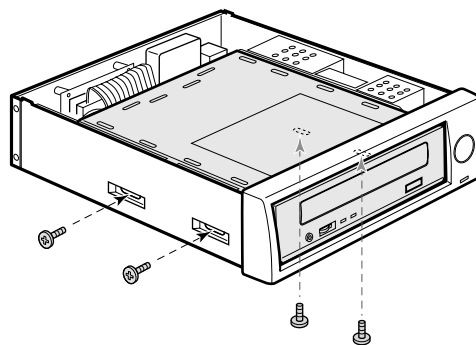
(3) Push the hook on front panel to release front cover if you mount a 5 inch drive. If not, you don't need to release it. In such a case, proceed to step (6).



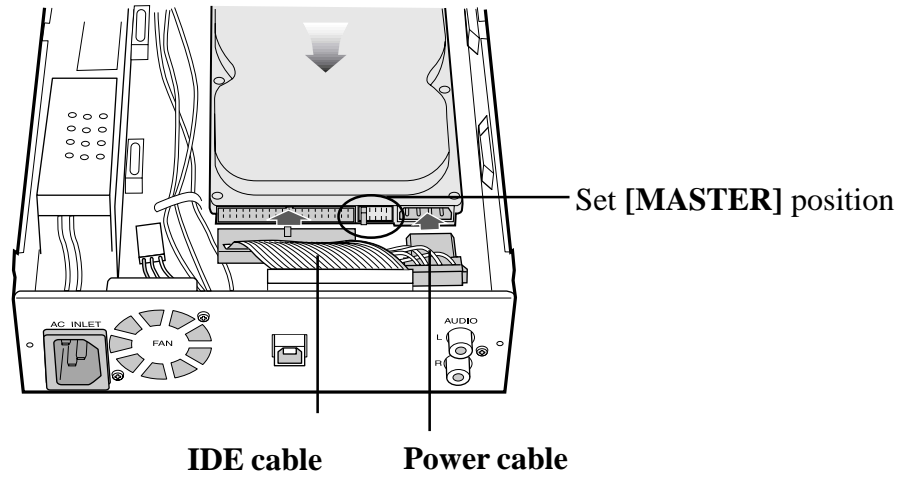
- (4) Set **[MASTER]** position in jumper setting. Then, slide a 5 inch drive such as a CD-ROM into inner case and connect IDE cable, power cable and analog audio cable (red-colored line is R ; white-colored line is L).



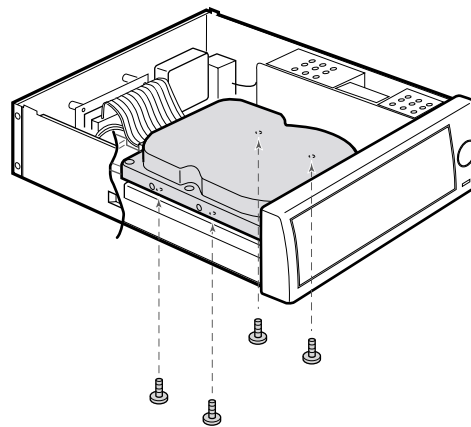
- (5) Fix the drive to inner case by screws. Then, replace the top cover and slide back the inner case into enclosure. You have finished mounting a drive. Proceed to Chapter 2-2.



(6) If you mount a 3.5 inch hard drive, set **[MASTER]** position in jumper setting. Then, connect IDE cable, power cable.

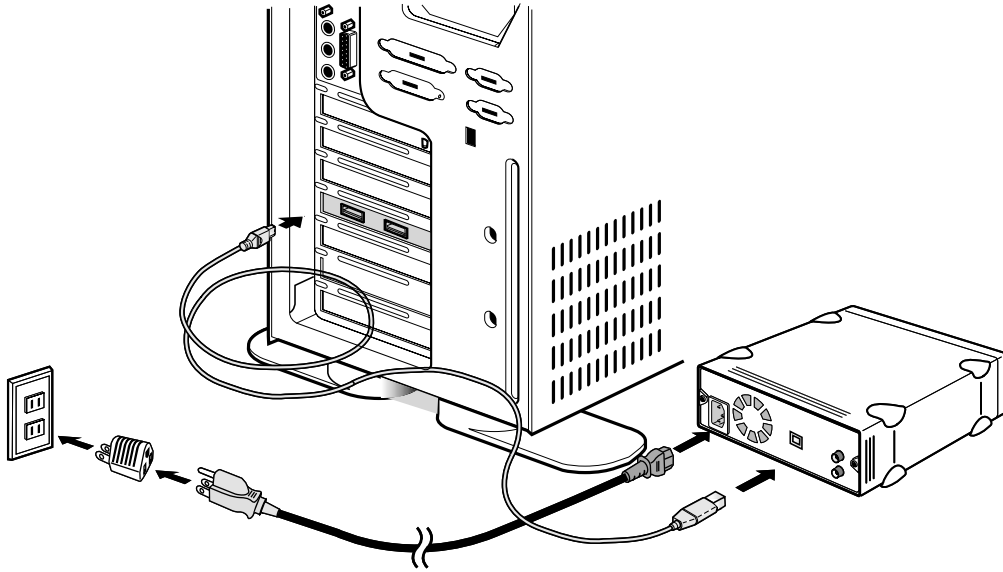


(7) Fix the drive to inner case by screws. Then, replace the top cover and slide back the inner case into enclosure. You have finished mounting a drive. Proceed to Chapter 2-2.



## 2-2. Connecting a power cable and USB cable

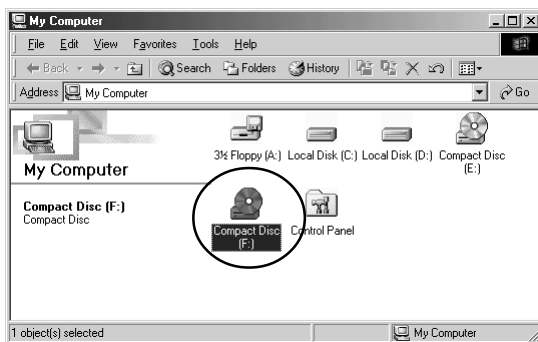
Connect a power cable to an outlet. And connect the bundled USB cable to the USB port on your PC as shown below.



## 2-3. Installing USB driver

### (A) For Windows 2000, Windows Me users

Turn on the U2EC5 case. The drive will be detected and the driver will be installed automatically. If the installation was successful, you can find the added icon in [My Computer]. The example figure below shows a CD-ROM drive is added (Drive letter depends on your system).



### NOTE:

If you are a Windows 2000 user, you must be logged on as Administrator or have administrator privileges to install the driver.

**(B)For Windows 98SE users**

a)Turn on the U2EC5 case. The following window appears. Insert the Support Software CD-ROM and click [Next].



b)Select [Search for the best driver for your device.(Recommended)] and click [Next].



c) Select the [CD-ROM drive] option and click [Next].



d) Make sure RTUS2ST.INF was found and click [Next].



e)When the driver has been copied onto your system, the following window appears. Click [**Finish**].



f)The following window appears. Click [**Next**].



g) Select [Search for the best driver for your device.(Recommended)] and click [Next].



h) Select the [CD-ROM drive] option and click [Next].



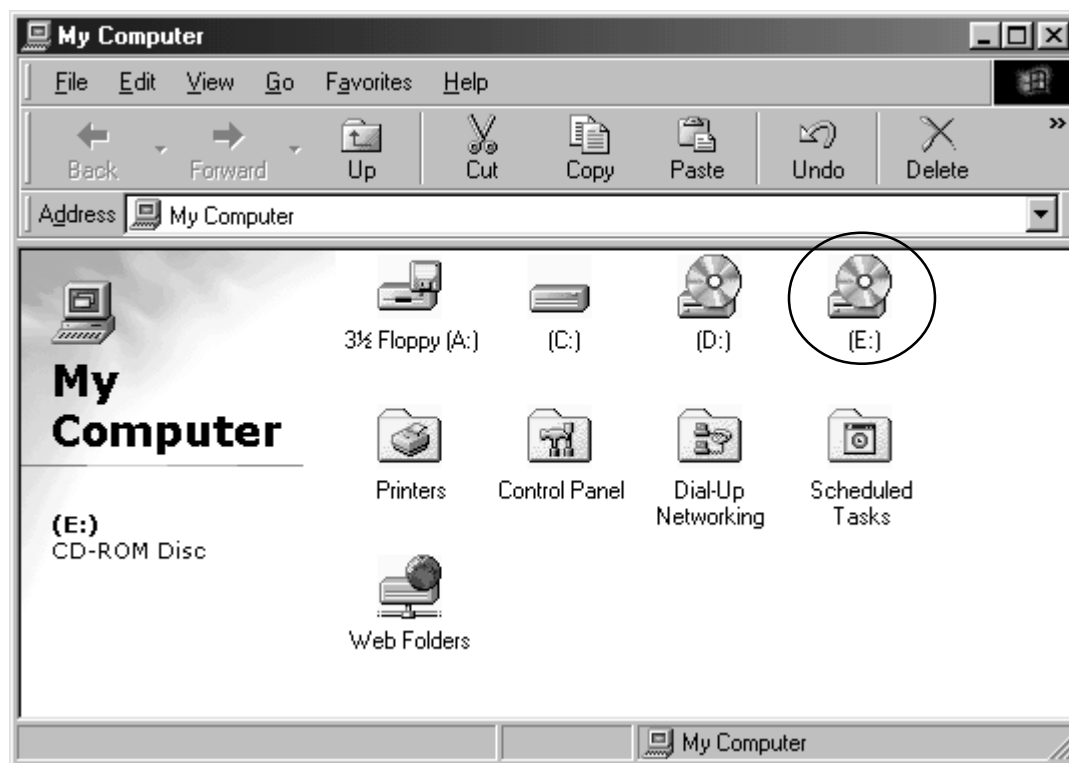
i) Make sure RTUS2STS.INF was found and click **[Next]**.



j) When the driver has been copied onto your system, the following window appears. Click **[Finish]**.



If the installation was successful, you can find the added icon in **[My Computer]**. The example figure below shows a CD-ROM drive is added(Drive letter depends on your system).



---

## 3. Removing the U2EC5

---

(1)When you click on the removal icon on the task tray, a pop-up menu similar to the following will appear. Select it.



(OS:Windows 98SE)

(2)When the message box saying [**the device can now be safely removed from the system**] appears, click [**OK**]. You can remove the U2EC5 from the PC safely.

## 4. Disk Formatting and Partitioning Utility

With the bundled utility, you can change file system or format a storage device. Follow the steps below to use the utility(The device information depends on a device in the U2EC5).

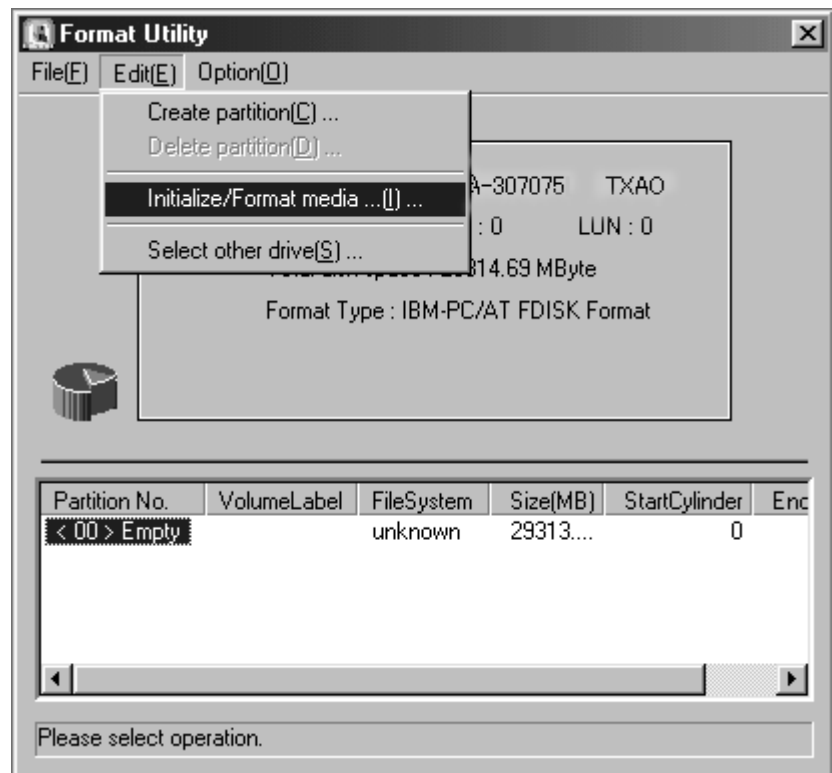
1. Make sure the U2EC5 is connected and powered on.
2. Insert the support software CD-ROM into the CD-ROM drive.
3. Open [My Computer] and double click the **CD-ROM drive** icon. Double click the **FRFMTW9X.EXE** file at the [Formatter] folder in the [Rhd-U2] folder.
4. [Select the Drive] dialog will appear. Select the drive and click [Select].



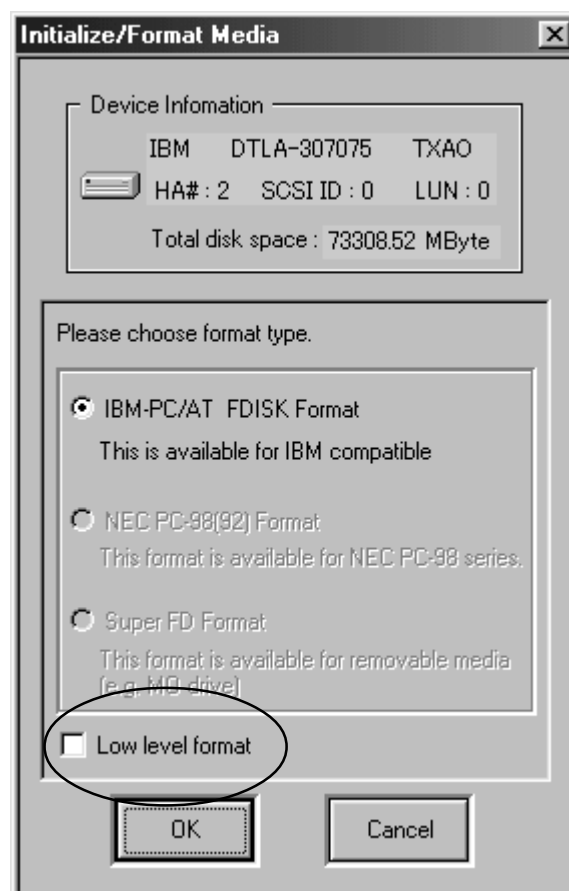
### (NOTE)

1. The drive list window shows all the devices connected to SCSI, IDE besides USB interface on your PC.
2. You can format a storage device such as a HDD, Zip, MO with this utility. But, you can't format a CD-R, CD-RW, DVD-RAM.
3. This utility runs only on Windows 98SE, Windows Me.
4. If you use Windows 2000, you have to use [Disk Management] in Windows 2000. If you format an over 32GBytes HDD, you have to select [NTFS] file system. If you select [FAT32], you will fail to format the HDD. For more information, refer to Windows 2000 Help file.

5. [Format Utility] dialog will appear. Select [Initialize/Format media] from the [Edit] menu.



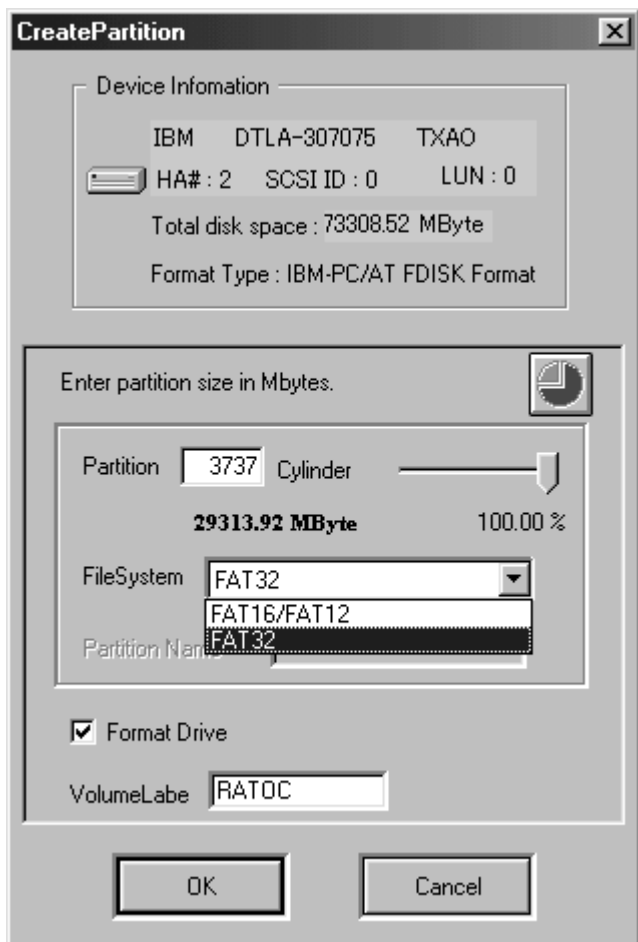
6. [Initialize/Format Media] dialog will appear. Select **format type**. Then, click [OK].



(NOTE)

**You can't do low level format to the U2EC5. Never check this [Low level format] option.**

7.If you selected **IBM-PC/AT FDISK Format**, the message box saying [**You should create partition next**] will appear. Click [**OK**]. Then, you will see the screen shown in the step 5. Select [**Create Partition**] from the [**Edit**] menu. [**Create Partition**] dialog will appear as shown to the right. Select **File System** from the list box and set Partition size, using the slider bar. If you format the drive, check the [**Format Drive**] option.Then, click [**OK**] to create partition. If you selected **Super FD format**, select **File System** from the list box and click [**OK**].



8.The confirmation message box will appear. Click [**OK**].

9.The dialog shown in the step 5 will appear. Select [**Quit**] from the [**Edit**] menu. The message box will appear. Click [**OK**].Then, remove the U2EC5 and reconnect it for your information to take effect. (See Chapter 3 for how to remove the U2EC5).

---

# 5. Registration and Tech-support

---

## 5-1. How to Register

We highly recommend to register yourself as our customer through our on-line registration.

- (1) On the Internet, access our site. (<http://www.ratocsystems.com/english/>)
- (2) Follow window menu guide to register.
- (3) Fill out and submit the registration form.

## 5-2. Software Update and Support

### -Software Update-

The latest driver and application software are subject to change for improvement or bug fix. You can download the latest version from our web site. (<http://www.ratocsystems.com/english/>)

### -Technical Support-

You can reach our Tech support staff at the following:

RATOC Systems International, Inc. Tech Support

(Open : Mon - Fri 9:30AM - 5:00PM PST)

Address : 1933 O'Toole Avenue Suite A109, SanJose, CA 95131, U.S.A.

Phone : (408)955-9400

Fax : (408)955-9402

E-mail : [int-support@rexpccard.co.jp](mailto:int-support@rexpccard.co.jp)

Web : <http://www.ratocsystems.com/english/>

---

# Appendix

---

## **Copyright**

©2001 RATOC Systems, Inc. All rights reserved. No part of this publication may be reproduced, stored in a retrieval system, or transmitted in any form or by any means (electronic, mechanical, photocopying, recording or otherwise) without the prior written consent of RATOC Systems, Inc.

## **Trademarks**

- Windows is a registered trademark of Microsoft Corporation.
- Other brand and product names may be registered trademarks or trademarks of their respective holders.

## **Changes**

The information in this User's Manual is furnished for information only and is subject to change without notice. RATOC Systems, Inc. reserves the right to make changes in the product design or product improvements without reservations and without notification to its users. RATOC Systems, Inc. assumes no responsibility or liability for any errors or inaccuracies that may appear in this document.

## **FCC Statement**

This equipment has been tested and found to comply with the limits for a Class B digital device, pursuant to Part 15 of the FCC Rules. These limits are designed to provide reasonable protection against harmful interference in a residential installation. This equipment generates, uses and can radiate radio frequency energy and, if not installed and used in accordance with the instructions, may cause harmful interference to radio communications. However, there is no guarantee that interference will not occur in a particular installation. If this equipment does cause harmful interference to radio or television reception, which can be determined by turning the equipment off and on, the user is encouraged to try to correct the interference by one or more of the following measures:

- (1) Reorient or relocate the receiving antenna.
- (2) Increase the separation between the equipment and receiver.
- (3) Connect the equipment into an outlet on a circuit different from that to which the receiver is connected.
- (4) Consult the dealer or an experienced radio/TV technician for help.

Changes or modifications not expressly approved by the party responsible for compliance may result in this unit not complying with FCC Rules Part 15.