

# PE51EX

## Installation Guide

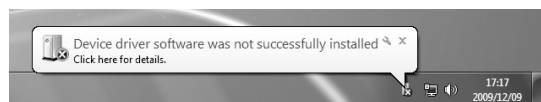
DEC 2009  
Rev. 1.0



### Before Installation :

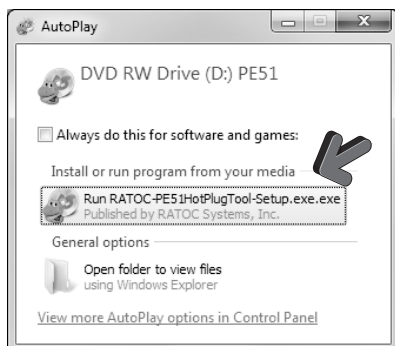
After the host computer is off and all power cords disconnected, insert the card into a vacant PCI Express slot by gently pushing the card until it is firmly seated.

At the first system boot you will see the balloon message below. You do not need to do anything, go ahead to the installation steps below.

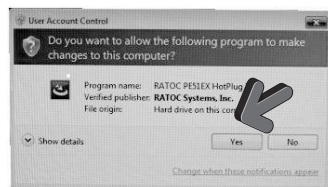


## 1 Windows Installation

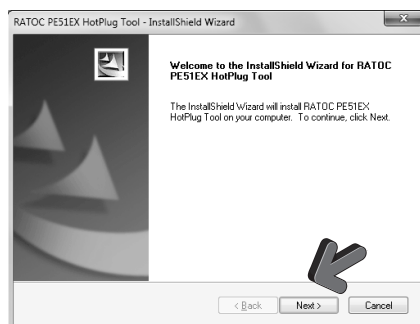
Insert the provided CD into your disc drive. You will see the AutoPlay dialog box, click the "Run RATOC-PE51 HotPlugTool-Setup.exe".



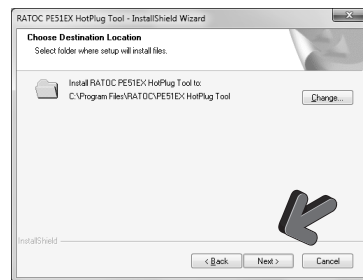
Under Windows 7 or Windows Vista you will see the "User Account Control" dialog box. Click the "Yes" button.



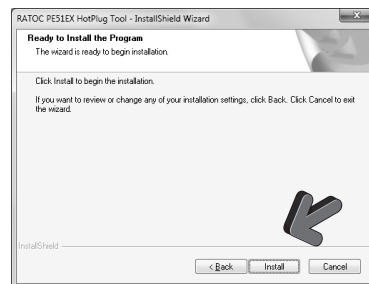
Installation will start, click the "Next >" button.



Installation will start, click the "Next >" button.



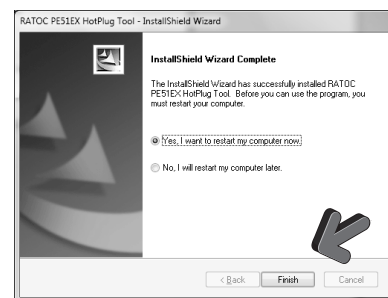
Click the "Install" button.



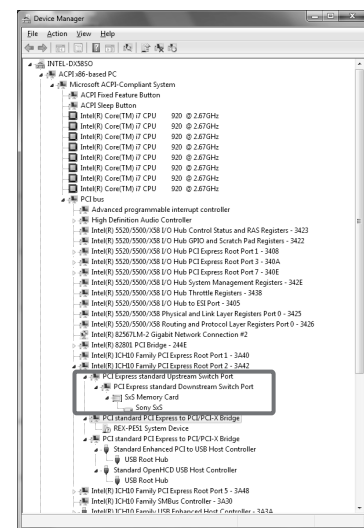
Security warning message will be displayed. Click the "Install" button.



Installation complete. Select the "Yes, I want to restart my computer now" and click the "Finish" button.



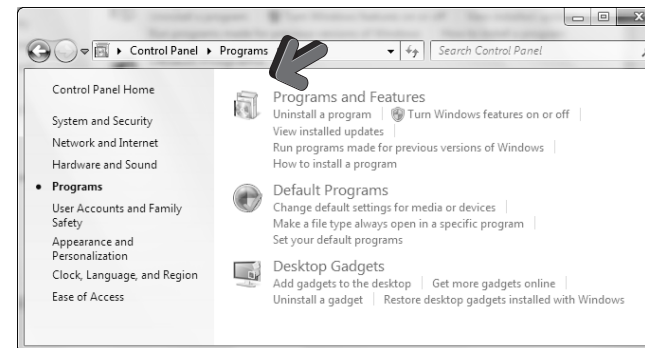
You can confirm installation complete successfully or not by the Device Manager as follows. Select "devices by connection" from the view menu. Insert ExpressCard(ex.SxS pro). If you can find "SxS Memory Card" under the "PCI Express standard Upstream Switch Port", installation complete successfully.



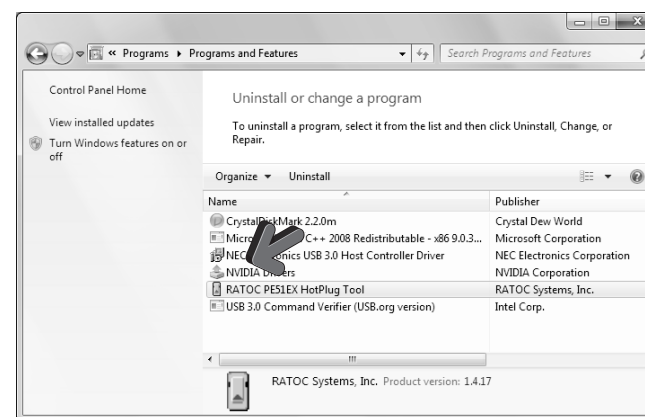
## 2 Windows Uninstallation

Following steps are example under Windows 7.

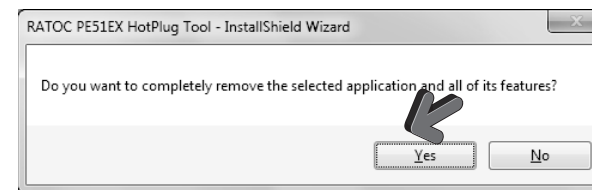
Open "Program" folder under control panel from start menu. Click the "Programs and Features" icon.



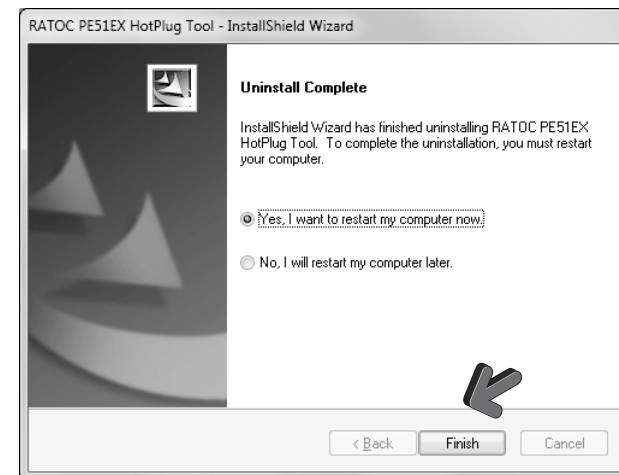
Click the "RATOC PE51EX HotPlug Tool".



Uninstallation will be start. Click the "Yes" button.



Uninstallation complete. Select the "Yes, I want to restart my computer now" and click the "Finish" button.

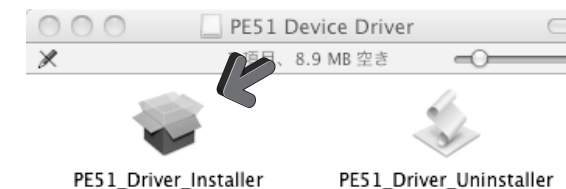


## 3 Mac Installation

Insert the provided CD into your disc drive. You will see following file and double click.  
- Mac OS 10.4 : PE51\_Device\_Driver104x.dmg  
- Mac OS 10.5 or 10.6 : PE51\_Device\_Driver.dmg

Followings are installation steps under Mac OS 10.6.

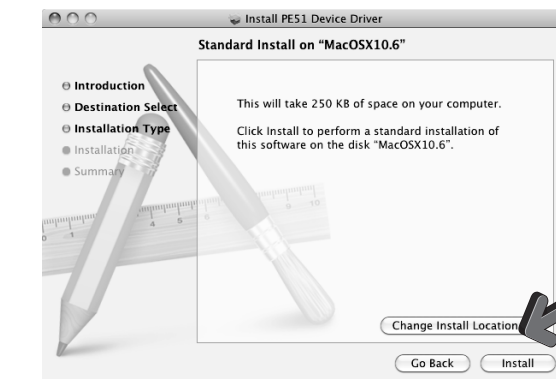
Double click the "PE51\_Driver\_Installer" icon and installation will be start.



Click the "Continue" button.



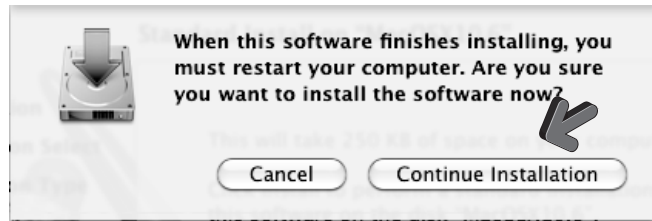
Click the "Install" button.



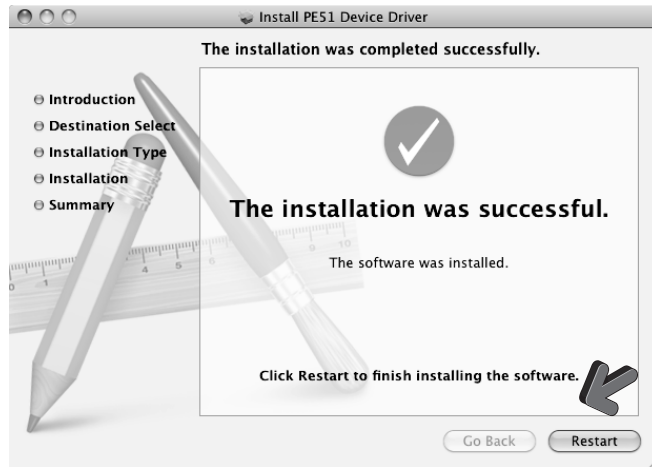
Enter your name and password. Click the "OK" button.



Confirm the system restart message and click the "Continue Installation" button.

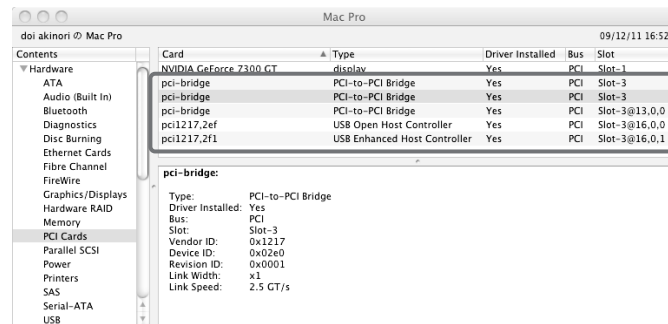


Installation complete message will be displayed, click the "Restart" button.



You can confirm installation complete successfully or not by the system profiler as follows.

1. Run the system profiler under utility folder of application.
2. Open the "PCI Cards" on the Hardware as show below.
3. If five kinds of driver is installed, installation complete successfully.



## 4 Mac Uninstallation

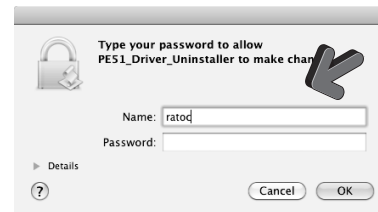
Followings are uninstallation steps under Mac OS 10.6. Insert the provided CD into your disc drive. You will see following file and double click.

- Mac OS 10.4 PE51\_Device\_Driver104x.dmg
- Mac OS 10.5 or 10.6 PE51\_Device\_Driver.dmg

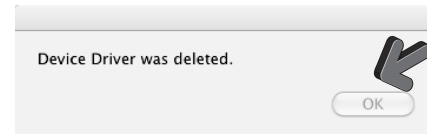
Double click the "PE51\_Driver\_Uninstaller" icon and uninstallation will be start.



Enter your name and password. Click the "OK" button.



Uninstallation complete message will be displayed and click the "OK" button.



## 5 ExpressCard HotPlug Operation

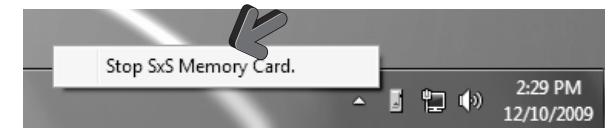
### 5-1. Install 3rd Party ExpressCard driver

Install ExpressCard driver following 3rd party manufacturer's recommendations. Some ExpressCard manufacturers recommend that you install their software driver(s), if required, prior to insert ExpressCard to ExpressCard slot.

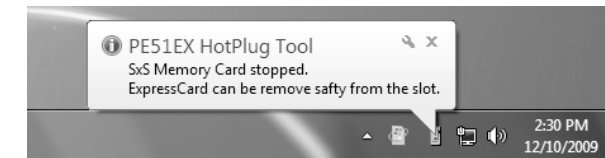
### 5-2. ExpressCard Remove operation

(Windows PC)

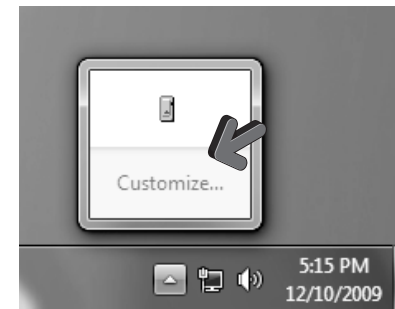
1. You must stop ExpressCard from HotPlug Tool icon menu first before remove ExpressCard from the slot.



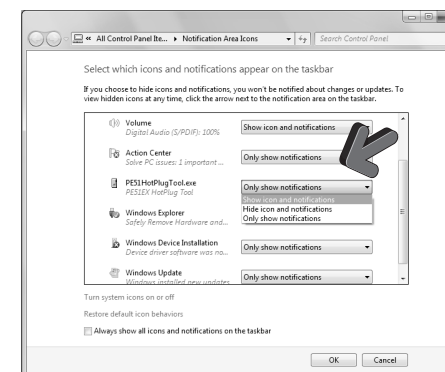
ExpressCard stop balloon message will be displayed. Now you can remove ExpressCard from the slot safely.



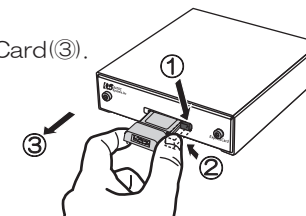
※ Under Windows 7 HotPlug Tool icon is hide. You should change the setting to view hide icon at any time from the "Customize..." menu.



Change the setting from "Only show notification" to "Show icon and notifications".



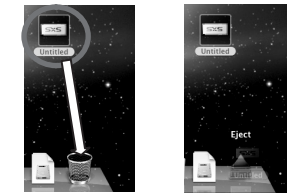
2. Push out the eject lever (1), push the eject lever (2) again and pull out the ExpressCard (3).



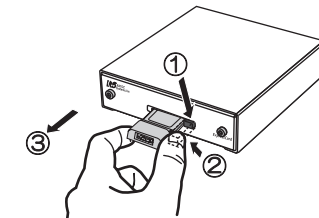
(Mac PC)

[Sony SxS Pro ExpressCard]

1. Drop the mounted drive icon to the trash box.

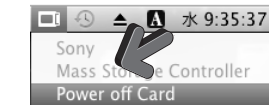


2. Push out the eject lever (1), push the eject lever (2) again and pull out the ExpressCard (3).



[Other ExpressCard]

1. Select "Power off Card" from the PC Card icon of menu bar.



2. Push out the eject lever (1), push the eject lever (2) again and pull out the ExpressCard (3).

